

MIDJ
in Italy

Nenè PR CF

design Paolo Vernier, 2013

Nenè armchair with four leg base. Frame in polypropylene upholstered with leather, ecoleather, fabric or custom's fabric, open backrest.



Finishing and Materials

Coating



Pix Fabric
9 colors



Mirage Fabric
17 colors



Fenix Wool Fabric
15 colors



Long Life Fabric
13 colors



Bubble Fabric
14 colors



Hot Fabric
14 colors



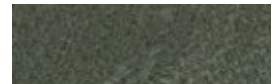
Secret Ecoleather
22 colors



Vintage Ecoleather
11 colors



Fiore Leather
18 colors



Vintage Leather
4 colors

Dimensions



Dimension	cm	inch
A	81	31.9
B	56	22
C	49	19.3
D	46	18.1
E	66	26

Volumetric Details

Weight 4
Volume 0.25 mc
Package 1

Downloads

Materials Certifications

Mirage Fabric	Martindale: 100.000 cycles Composition: 100% Polyester Shrinking about 1% Fire retardant fabric: classe 1IM, B1 DIN 4102, M1, B1 OENORM Part.1, BS 5852 Crib 5, EN 1021, USA Calif. Bull 117, IMO 688 (17) - IMO 563 (14) - IMO 653 (16)
Fenix Wool Fabric	Martindale: 100.000 cycles Composition: 70% Wool, 25% Polyamid, 5% Fibers Shrinking about: 1% Fire retardant fabric: BS 5852 part. 1, Cigaret test, Match test
Long Life Fabric	Martindale 40.000 cycles Composition: 74% Polyester, 18% Cotton, 8% Acrylic Shrinking about 1%
Bubble Fabric	Martindale: 35.000 cycles Composition: 100% Pes Fire retardant fabric: BS5852:2006 (p. 11 CRIB 5), EN1021-1, EN1021-2, UNI 9175:2010 - classe 1 im
Hot Fabric	Martindale: 45.000 cycles Composition: 100% Pes Fire retardant fabric: BS5852:2006 (p. 11 CRIB 5), EN1021-1, EN1021-2, UNI 9175:2010 - classe 1 im
Secret Ecoleather	Martindale: 150.000 cycles Composition: 31% Cotton, 48% Polyurethane, 21% Polyester Shrinking about: 1% Fire retardant ecoleather: Classe 1IM, BS 5852 Part. 1, Cigaret Test, Match Test
Vintage Ecoleather	Ecoleather phtalatic free - R.E.A.C.H. 1907/2006/EU Breathable ecoleather Composition: 90% PVC, 7% Polyurethane, 3% Cotton Shrinking about 1%
Fiore Leather	BS 5852 parte 1; ISO 5402>50000 cicli; ISO 105B02 ? 5; ISO 3377-1 ?20 N; ISO 11644 ? 2.5 N/Cm; EN 1021/1-2; EN ISO 17233 -20°; IMO RES A 6528(16)
Vintage Leather	UNI EN ISO 105 B02 ?3; ISO 5402>50000 cicli; ISO 3377-1?20; UNI EN ISO 11640 Secco - Dry 50 c ?4 Umido - Wet 20 c ? 3; Sudore - Sweat 20 c ? 3