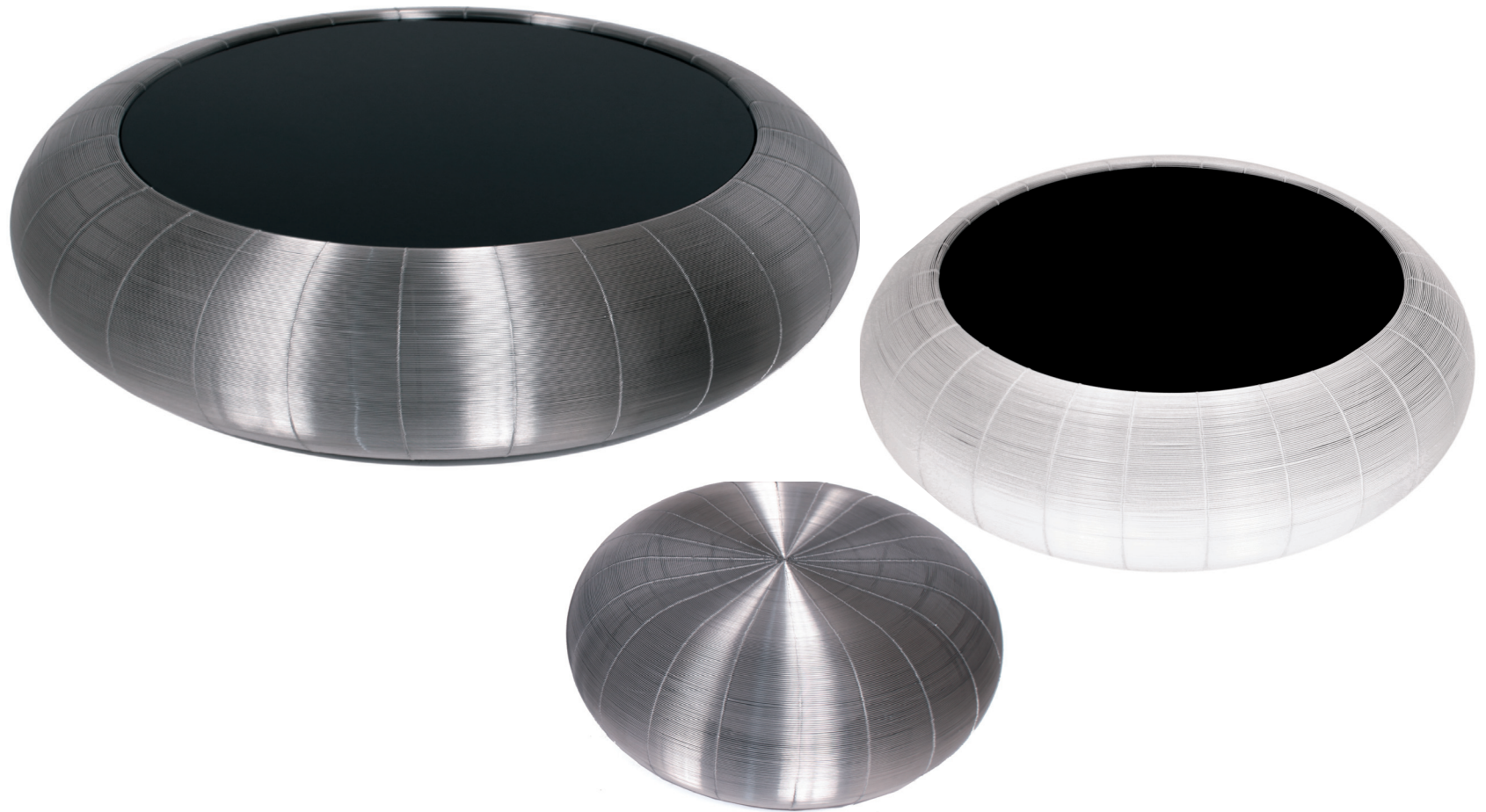


# Collection MOON

Design Wood & Cane

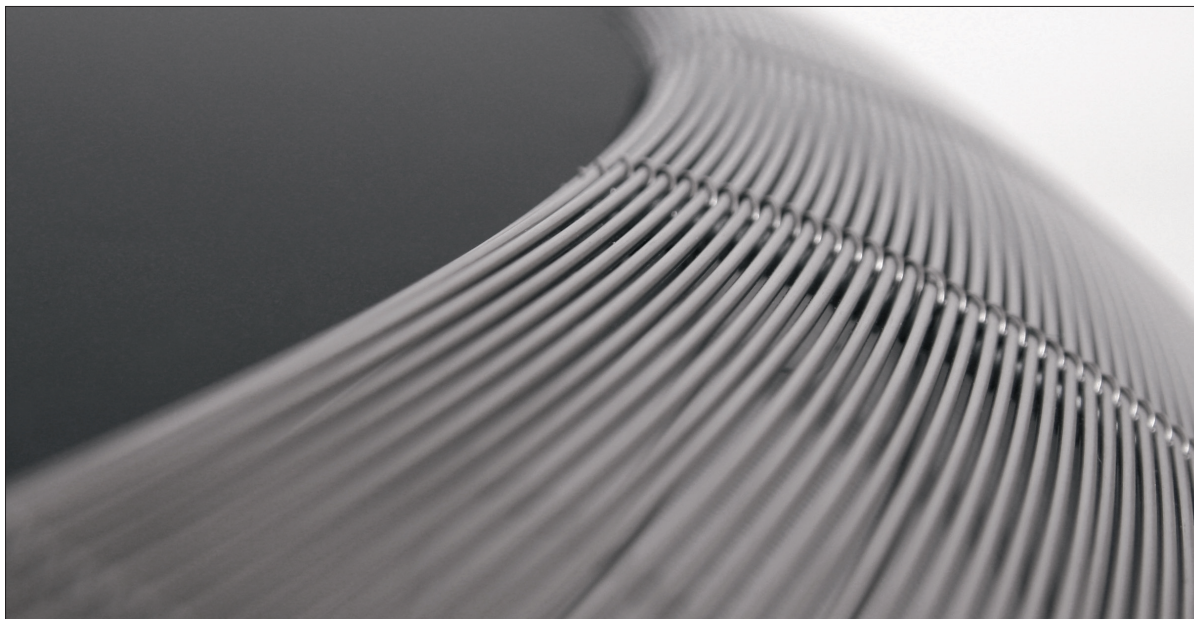
rochebobois  
PARIS



# Collection MOON

rochebobo  
PARIS

Design Wood & Cane



## TABLES BASSES

Structure acier.

Tissage fil d'inox ou fil laqué blanc  
(un seul fil continu).

Verre noir acidé 12 mm.

## COFFEE TABLES

Steel structure.

Woven stainless steel wires  
or white lacquered wires  
(one uninterrupted wire).  
12 mm black acid glass.

## MESA DE CENTRO

Estructura de acero.

Hilo de inox o lacado blanco  
(un hilo continuo).

Cristal acidado negro 12 mm.

