



SAILOR

design David Lopez Quincoces

Bookcase inspired by the world of boating, which allows maximum freedom for floor-to-ceiling or wall mounted compositions. Steel uprights with hexagonal section 25 mm, fitted with holes having a center to center distance of 38.5 cm (35 cm of useful space) to install the shelves, and an additional wall fixing spacer, for greater structural rigidity (for both versions). Uprights finishes: matt transparent liquid painted steel, brass coloured steel (with matt transparent finish), or gunmetal grey colour liquid painted steel. Floor-to-ceiling support plates with joint, Ø50 mm in satinized brass with a transparent matt varnish, screwed to the uprights. Floor, ceiling and wall support secured by black PVC elements. Floor-to-ceiling version, standard uprights height up to 269cm; maximum uprights height 305cm. Wall mounted version 250 cm with plate fitted for wall mounting (with a fisher) and wall support guaranteed by black PVC rounds. "Keel shaped" shelves (length 75/90/120/150 cm depth 33 cm) made of extruded aluminium bar, with an upper top veneered in the finishing in collection and with terminal parts in solid wood, always in the same finish of the "keel", fitted with joints to allow the fixing to the uprights.

Shelves available in the finishes:

- Top veneered in Stone Oak® with "keel" and terminal parts painted matt black;

- Top veneered in bleached maple with "keel" and terminal parts in Canaletto walnut "rigatino";

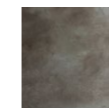
Storage unit (available only for shelves length 90/120 cm, depth 32 cm) made of MDF, with flap door with integrated hinge and "push&pull" mechanism for the opening and closing. Storage unit available in the following combinations of finishes:

- Flap door and back panel veneered, only in the external part, in Stone Oak® with acrylic painting finish; bottom and internal parts always lacquered matt black;

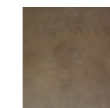
- Flap door, back panel and internal part veneered in Canaletto walnut "rigatino".

Internal shelf in smoked grey tempered glass, 8 mm thick, adjustable on 3 positions by means of shelf supports. We recommend a maximum of two storage units per section. For both versions, in order to ensure greater structural stability, it is advisable to arrange the wall fixing spacer, where possible.

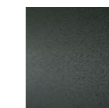
Uprights



Matt
Transparent
Painted Steel



Brass Coloured
Steel with Matt
Transparent
Finish



Steel with
Gunmetal
Grey Coating

Disk

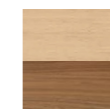


Matt Brass

Shelves



Stone Oak®+
Lacquered
Matt Black

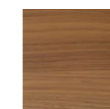


Bleached Maple+
Canaletto Walnut
"Rigatino"

Storage Unit



Stone Oak®+
Lacquered
Matt Black



Canaletto Walnut
"Rigatino"

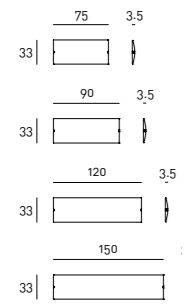
Notes

For assembly, please refer to the instruction included with the product.

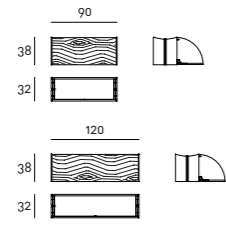
Stone Oak®: this wood owes its particular coloring to an entirely natural process. Because of this, some slabs may look more brown than others. Our commitment is to provide you a high quality product; any differences in color should not be considered as defects.

On the matt transparent liquid painted uprights, any stain or imperfection, especially in the welding areas, are not to be considered defects but intrinsic characteristics of the material.

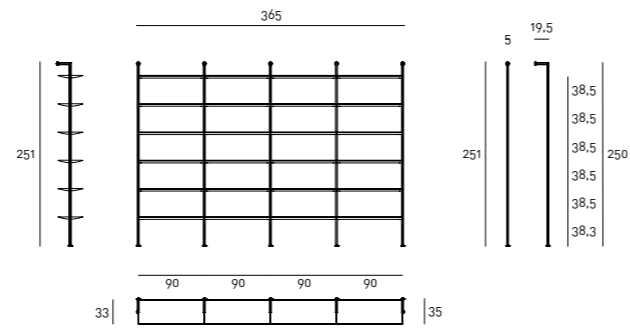
Technical Drawings
Shelves



Storage Units

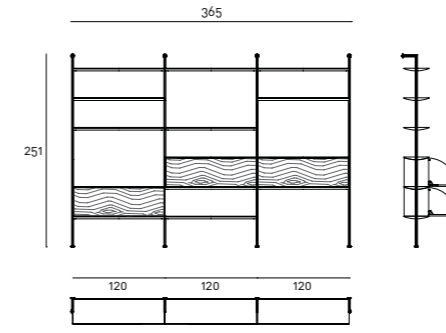


Wall Mounted version
Composition 01



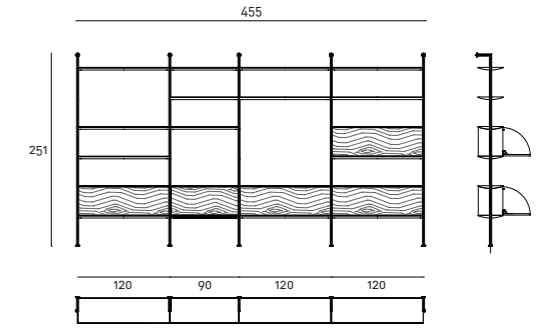
- SAIL251LM
- SAIL251LM
- SAIL251CM
- SAIL251CM
- SAIL251CM
- SAIC120 (3 PC)
- SAIR090 (24 PC)

Wall Mounted version with Storage Units
Composition 05



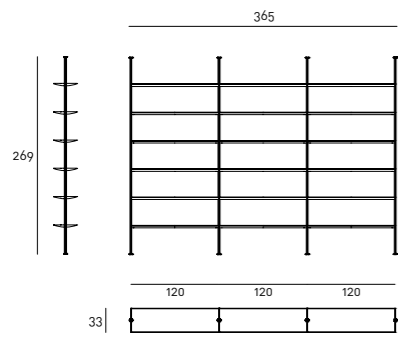
- SAIL251LM
- SAIL251LM
- SAIL251CM
- SAIL251CM
- SAIL251CM
- SAIC120 (3 PC)
- SAIR120 (14 PC)

Composition 06



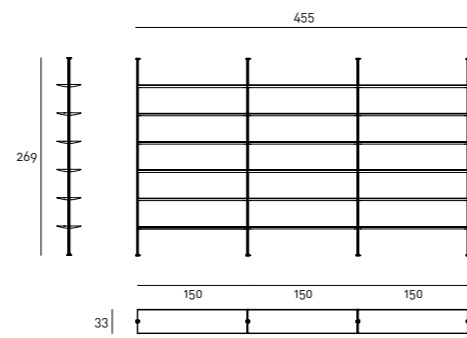
- SAIL251LM
- SAIL251LM
- SAIL251CM
- SAIL251CM
- SAIL251CM
- SAIC090
- SAIC120 (4 PC)
- SAIR090 (5 PC)
- SAIR120 (15 PC)

Floor to Ceiling version
Composition 02



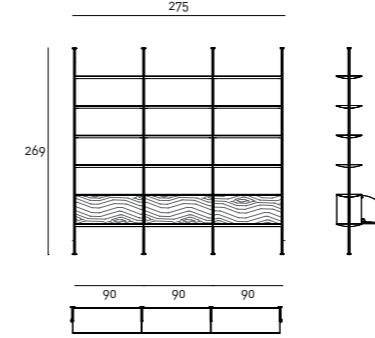
- SAIL269LS
- SAIL269LS
- SAIL269CS
- SAIL269CS
- SAIR120 (18 PC)

Composition 03



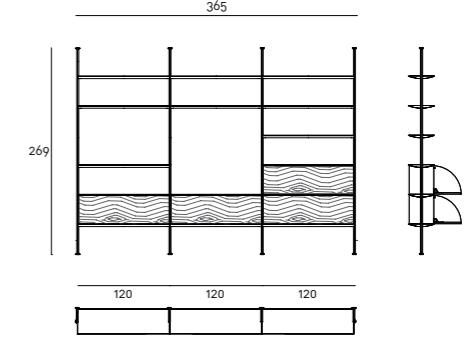
- SAIL269LS
- SAIL269LS
- SAIL269CS
- SAIL269CS
- SAIR150 (18 PC)

Floor to Ceiling version with Storage Units
Composition 07



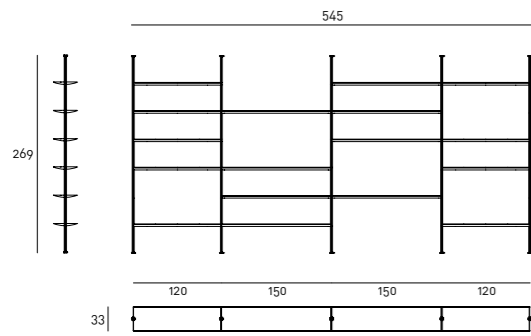
- SAIL269LS
- SAIL269LS
- SAIL269CS
- SAIL269CS
- SAIL269CS
- SAIC090 (3 PC)
- SAIR090 (18 PC)

Composition 08



- SAIL269LS
- SAIL269LS
- SAIL269CS
- SAIL269CS
- SAIL269CS
- SAIC120 (4 PC)
- SAIR120 (15 PC)

Composition 04



- SAIL269LS
- SAIL269LS
- SAIL269CS
- SAIL269CS
- SAIL269CS
- SAIR120 (9 PC)
- SAIR150 (8 PC)

The commercial codes refer to the elements chosen in the above-proposed compositions

