

clay

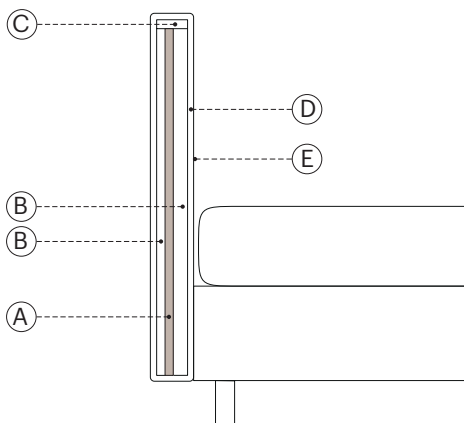
design bolzan LAB



Tecnologie d'avanguardia per una personalizzazione totale, dai decori alle dimensioni: un concetto che permette di progettare liberamente le più diverse soluzioni, nell'ambiente domestico come nell'hotellerie, sempre con una qualità artigianale e uno stile inconfondibile.

Cutting-edge technologies for total customization, from decorations to dimensions: a concept allowing you to freely design the most diverse solutions, at home as well as in the hotel industry, always with craftsmanship quality and a unique style.

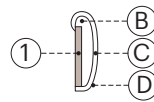
informazioni tecniche / technical info:



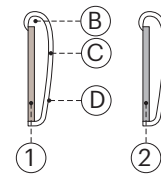
testata / headboard

- A. truciolare 20mm / 20mm chipboard
- B. espanso ignifugo D 25 kg/mc / fire retardant foam D 25 kg mc
- C. espanso riciclato D 120 kg/mc / recycled foam D 120 kg/mc
- D. resinato poliestere ignifugo 100g / 100g fire resistant resin polyester fiber
- E. maglia polipropilene 70g / 70g polypropylene mesh

h 20



h 29



giroletti / bedframes

- 1. listellare abete 22mm 3 strati / 22mm 3-layer fir blockboard
- 2. estruso in alluminio 22mm / 22 mm extruded aluminum
- B. espanso ignifugo D 35 kg/mc / fire resistant foam D 35 kg/mc
- C. resinato poliestere ignifugo 100g / 100g fire resistant resined polyester fiber
- D. maglia polipropilene 70g / 70g polypropylene mesh

predisposto per materassi / for mattresses:

120	x	200	47 ² / ₈ "	x	78 ⁶ / ₈ "
140	x	200	55 ¹ / ₈ "	x	78 ⁶ / ₈ "
160	x	200	63"	x	78 ⁶ / ₈ "
170	x	200	66 ⁷ / ₈ "	x	78 ⁶ / ₈ "
180	x	200	70 ⁷ / ₈ "	x	78 ⁶ / ₈ "

137	x	190	54"	x	75"	F ull double size
153	x	203	60"	x	80"	Q ueen size
193	x	203	76"	x	80"	K ing size

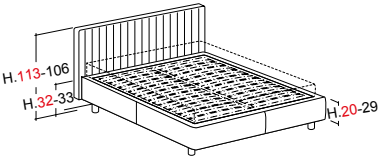
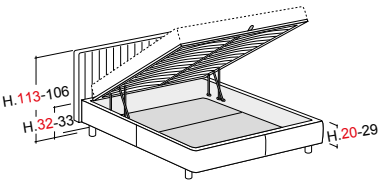
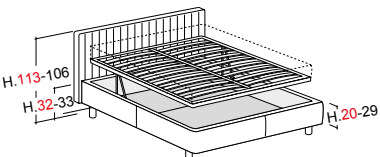
personalizzazioni disponibili / available customizations:



gonnellina / skirt gonnellina / skirt chic

Clay Maison / Firwood structure

Standard feet Vasetto - removable headboard cover in fabric and non removable in leather or eco-leather

	Mattress	Ext. dimension	Code	D	C	A	Plus	Luxury fabric	Luxury leather	Nuvola fabric	Nuvola leather	TCL	Cover		
													ml	mc	kg
<p>rounded base h.20 - rounded base h.29 without slatted base (to choose a slatted base see flap on the right)</p> 	120x200	143x221	CLD29										7	0.45	63
	135x190	163x211	CLI29										7.4	0.47	68
	137x190 DOUBLE 54X75	163x211	CLE29										7.4	0.47	68
	140x200	163x221	CLU29										7.5	0.47	68
	150x200	183x221	CLL29										7.8	0.5	74
	153x203 QUEEN 60X80	183x224	CLQ29										7.8	0.5	74
	160x200	183x221	CLM29										8	0.5	74
	180x200	203x221	CLG29										8.5	0.52	80
	190x200	223x221	CLP29										9	0.54	86
	193x203 KING 76X80	223x224	CLK29										9	0.54	86
	Loose cover		R29											0.02	
<p>rounded base h.20 - rounded base h.29 w/BOX orthopaedic slatted base included suggested weights for mattresses (see flap on the right)</p> 	120x200	143x221	CLD29B										7	0.63	121
	135x190	163x211	CLI29B										7.4	0.69	129
	137x190 DOUBLE 54X75	163x211	CLE29B										7.4	0.69	129
	140x200	163x221	CLU29B										7.5	0.69	129
	150x200	183x221	CLL29B										7.8	0.75	139
	153x203 QUEEN 60X80	183x224	CLQ29B										7.8	0.75	139
	160x200	183x221	CLM29B										8	0.75	139
	180x200	203x221	CLG29B										8.5	0.79	150
	190x200	223x221	CLP29B										9	0.83	161
	193x203 KING 76X80	223x224	CLK29B										9	0.83	161
	Loose cover		R29B											0.02	
available inside height in Box 18cm															
<p>rounded base h.20 - rounded base h.29 w/easy-up BOX orthopaedic slatted base included suggested weights for mattresses (see flap on the right)</p> 	120x200	143x221	CLD29BE										7	0.67	131
	135x190	163x211	CLI29BE										7.4	0.73	139
	137x190 DOUBLE 54X75	163x211	CLE29BE										7.4	0.73	139
	140x200	163x221	CLU29BE										7.5	0.73	139
	150x200	183x221	CLL29BE										7.8	0.79	149
	153x203 QUEEN 60X80	183x224	CLQ29BE										7.8	0.79	149
	160x200	183x221	CLM29BE										8	0.79	149
	180x200	203x221	CLG29BE										8.5	0.83	160
	190x200	223x221	CLP29BE										9	0.87	171
	193x203 KING 76X80	223x224	CLK29BE										9	0.87	171
	Loose cover		R29BE											0.02	
available inside height in Box 18cm															

Clay Maison / Aluminum structure

Standard feet Vasetto - removable headboard cover in fabric and non removable in leather or eco-leather

	Mattress	Ext. dimension	Code	D	C	A	Plus	Luxury fabric	Luxury leather	Nuvola fabric	Nuvola leather	TCL	Cover		kg
													ml	mc	
rounded base h.29 without slatted base (to choose a slatted base see flap on the right)	120x200	143x221	CLD29A										7	0.45	63
	135x190	163x211	CLI29A										7.4	0.47	68
	137x190 DOUBLE 54X75"	163x211	CLE29A										7.4	0.47	68
	140x200	163x221	CLU29A										7.5	0.47	68
	150x200	183x221	CLL29A										7.8	0.5	74
	153x203 QUEEN 60X80"	183x224	CLQ29A										7.8	0.5	74
	160x200	183x221	CLM29A										8	0.5	74
	180x200	203x221	CLG29A										8.5	0.52	80
	190x200	223x221	CLP29A										9	0.54	86
	193x203 KING 76X80"	223x224	CLK29A										9	0.54	86
	Loose cover		R29A											0.02	5
rounded base h.29 w/BOX orthopaedic slatted base included suggested weights for mattresses (see flap on the right)	120x200	143x221	CLD29BA										7	0.63	121
	135x190	163x211	CLI29BA										7.4	0.69	129
	137x190 DOUBLE 54X75"	163x211	CLE29BA										7.4	0.69	129
	140x200	163x221	CLU29BA										7.5	0.69	129
	150x200	183x221	CLL29BA										7.8	0.75	139
	153x203 QUEEN 60X80"	183x224	CLQ29BA										7.8	0.75	139
	160x200	183x221	CLM29BA										8	0.75	139
	180x200	203x221	CLP29BA										8.5	0.79	150
	190x200	223x221	CL29BA										9	0.83	161
	193x203 KING 76X80"	223x224	CL29BA										9	0.83	161
available inside height in Box 18cm	Loose cover		R29BA											0.02	5
rounded base h.29 w/easy-up BOX orthopaedic slatted base included suggested weights for mattresses (see flap on the right)	120x200	143x221	CLD29BEA										7	0.67	131
	135x190	163x211	CLI29BEA										7.4	0.73	139
	137x190 DOUBLE 54X75"	163x211	CLE29BEA										7.4	0.73	139
	140x200	163x221	CLU29BEA										7.5	0.73	139
	150x200	183x221	CLL29BEA										7.8	0.79	149
	153x203 QUEEN 60X80"	183x224	CLQ29BEA										7.8	0.79	149
	160x200	183x221	CLM29BEA										8	0.79	149
	180x200	203x221	CLG29BEA										8.5	0.83	160
	190x200	223x221	CLP29BEA										9	0.87	171
	193x203 KING 76X80"	223x224	CLK29BEA										9	0.87	171
available inside height in Box 18cm	Loose cover		R29BEA											0.02	5
rounded base h.29 w/HANDS FREE BOX orthopaedic slatted base included suggested weights for mattresses (see flap on the right)	150x200	183x224	CLL29BHF										7.8	0.79	149
	153x203 QUEEN 60X80"	183x227	CLQ29BHF										7.8	0.79	149
	160x200	183x224	CLM29BHF										8	0.79	149
	180x200	203x224	CLG29BHF										8.5	0.83	160
	190x200	223x224	CLP29BHF										9	0.87	171
	193x203 KING 76X80"	223x227	CLK29BHF										9	0.87	171
	available inside height in Box 18cm	Loose cover		R29BEHF											0.02

Available on request bedbases for mattresses of 190 cm (surcharge 5%) or 210 cm (15% surcharge) length.
 For other bespoke requests 30% surcharge.

Clay Maison Medium / Firwood structure

Standard feet Vasetto - removable headboard cover in fabric and non removable in leather or eco-leather

	Mattress	Ext. dimension	Code	D	C	A	Plus	Luxury fabric	Luxury leather	Nuvola fabric	Nuvola leather	TCL	Cover		
													ml	mc	kg
rounded base h.20 - rounded base h.29 without slatted base (to choose a slatted base see flap on the right)	120x200	143x221	CLMD29										7.5	0.49	66
	135x190	163x211	CLMI29										7.9	0.52	72
	137x190 DOUBLE 54X75"	163x211	CLME29										7.9	0.52	72
	140x200	163x221	CLMU29										8	0.52	72
	150x200	183x221	CLML29										8.3	0.55	78
	153x203 QUEEN 60X80"	183x224	CLMQ29										8.3	0.55	78
	160x200	183x221	CLMM29										8.5	0.55	78
	180x200	203x221	CLMG29										9	0.58	85
	190x200	223x221	CLMP29										9.5	0.61	92
	193x203 KING 76X80"	223x224	CLMK29										9.5	0.61	92
	Loose cover		R29											0.02	5
rounded base h.20 - rounded base h.29 w/BOX orthopaedic slatted base included suggested weights for mattresses (see flap on the right)	120x200	143x221	CLMD29B										7.5	0.67	124
	135x190	163x211	CLMI29B										7.9	0.74	133
	137x190 DOUBLE 54X75"	163x211	CLME29B										7.9	0.74	133
	140x200	163x221	CLMU29B										8	0.74	133
	150x200	183x221	CLML29B										8.3	0.8	143
	153x203 QUEEN 60X80"	183x224	CLMQ29B										8.3	0.8	143
	160x200	183x221	CLMM29B										8.5	0.8	143
	180x200	203x221	CLMG29B										9	0.85	155
	190x200	223x221	CLMP29B										9.5	0.9	167
	193x203 KING 76X80"	223x224	CLMK29B										9.5	0.9	167
available inside height in Box 18cm	Loose cover		R29B											0.02	5
rounded base h.20 - rounded base h.29 w/easy-up BOX orthopaedic slatted base included suggested weights for mattresses (see flap on the right)	120x200	143x221	CLMD29BE										7.5	0.71	134
	135x190	163x211	CLMI29BE										7.9	0.78	143
	137x190 DOUBLE 54X75"	163x211	CLME29BE										7.9	0.78	143
	140x200	163x221	CLMU29BE										8	0.78	143
	150x200	183x221	CLML29BE										8.3	0.84	153
	153x203 QUEEN 60X80"	183x224	CLMQ29BE										8.3	0.84	153
	160x200	183x221	CLMM29BE										8.5	0.84	153
	180x200	203x221	CLMG29BE										9	0.89	165
	190x200	223x221	CLMP29BE										9.5	0.94	177
	193x203 KING 76X80"	223x224	CLMK29BE										9.5	0.94	177
available inside height in Box 18cm	Loose cover		R29BE											0.02	5

Available on request bedbases for mattresses of 190 cm (surcharge 5%) or 210 cm (15% surcharge) length.
For other bespoke requests 30% surcharge.

Clay Maison Medium / Aluminum structure

Standard feet Vasetto - removable headboard cover in fabric and non removable in leather or eco-leather

	Mattress	Ext. dimension	Code	D	C	A	Plus	Luxury fabric	Luxury leather	Nuvola fabric	Nuvola leather	TCL	Cover		kg
													ml	mc	
rounded base h.29 without slatted base (to choose a slatted base see flap on the right)	120x200	143x221	CLMD29A										7.5	0.49	66
	135x190	163x211	CLMI29A										7.9	0.52	72
	137x190 DOUBLE 54X75	163x211	CLME29A										7.9	0.52	72
	140x200	163x221	CLMU29A										8	0.52	72
	150x200	183x221	CLML29A										8.3	0.55	78
	153x203 QUEEN 60X80"	183x224	CLMQ29A										8.3	0.55	78
	160x200	183x221	CLMM29A										8.5	0.55	78
	180x200	203x221	CLMG29A										9	0.58	85
	190x200	223x221	CLMP29A										9.5	0.61	92
	193x203 KING 76X80"	223x224	CLMK29A										9.5	0.61	92
		Loose cover		R29A											0.02
rounded base h.29 w/BOX orthopaedic slatted base included suggested weights for mattresses (see flap on the right)	120x200	143x221	CLMD29BA										7.5	0.67	124
	135x190	163x211	CLMI29BA										7.9	0.74	133
	137x190 DOUBLE 54X75	163x211	CLME29BA										7.9	0.74	133
	140x200	163x221	CLMU29BA										8	0.74	133
	150x200	183x221	CLML29BA										8.3	0.8	143
	153x203 QUEEN 60X80"	183x224	CLMQ29BA										8.3	0.8	143
	160x200	183x221	CLMM29BA										8.5	0.8	143
	180x200	203x221	CLMG29BA										9	0.85	155
	190x200	223x221	CLMP29BA										9.5	0.9	167
	193x203 KING 76X80"	223x224	CLMK29BA										9.5	0.9	167
	available inside height in Box 18cm	Loose cover		R29BA											0.02
rounded base h.29 w/easy-up BOX orthopaedic slatted base included suggested weights for mattresses (see flap on the right)	120x200	143x221	CLMD29BEA										7.5	0.71	134
	135x190	163x211	CLMI29BEA										7.9	0.78	143
	137x190 DOUBLE 54X75	163x211	CLME29BEA										7.9	0.78	143
	140x200	163x221	CLMU29BEA										8	0.78	143
	150x200	183x221	CLML29BEA										8.3	0.84	153
	153x203 QUEEN 60X80"	183x224	CLMQ29BEA										8.3	0.84	153
	160x200	183x221	CLMM29BEA										8.5	0.84	153
	180x200	203x221	CLMG29BEA										9	0.89	165
	190x200	223x221	CLMP29BEA										9.5	0.94	177
	193x203 KING 76X80"	223x224	CLMK29BEA										9.5	0.94	177
	available inside height in Box 18cm	Loose cover		R29BEA											0.02
rounded base h.29 w/HANDS FREE BOX orthopaedic slatted base included suggested weights for mattresses (see flap on the right)	150x200	183x224	CLML29BHF										8.3	0.84	153
	153x203 QUEEN 60X80"	183x224	CLMQ29BHF										8.3	0.84	153
	160x200	183x224	CLMM29BHF										8.5	0.84	153
	180x200	203x224	CLMG29BHF										9	0.89	165
	190x200	223x224	CLMP29BHF										9.5	0.94	177
	193x203 KING 76X80"	223x224	CLMK29BHF										9.5	0.94	177
	available inside height in Box 18cm	Loose cover		R29BEHF											0.02

Clay Maison Large / Firwood structure

Standard feet Vasetto - removable headboard cover in fabric and non removable in leather or eco-leather- specify if headboard right or left

	Mattress	Ext. dimension	Code	D	C	A	Plus	Luxury fabric	Luxury leather	Nuvola fabric	Nuvola leather	TCL	Cover		kg
													ml	mc	
rounded base h.20 - rounded base h.29 without slatted base (to choose a slatted base see flap on the right)	120x200	203x221	CLLD29										9.5	0.49	66
	135x190	223x211	CLLI29										9.9	0.51	72
	137x190 DOUBLE 54X75	223x211	CLLE29										9.9	0.51	72
	153x203 QUEEN 60X80	243x224	CLLQ29										10.3	0.53	78
	140x200	223x221	CLLU29										10	0.52	72
	150x200	243x221	CLLL29										10.3	0.53	78
	160x200	243x221	CLLM29										10.5	0.54	78
	170x200	253x221	CLLF29										11	0.56	89
	180x200	263x221	CLLG29										11.5	0.58	85
	190x200	283x221	CLLP29										12.5	0.61	92
	193x203 KING 76X80	283x224	CLLK29										12.5	0.61	92
		Loose cover		R29										0.02	
rounded base h.20 - rounded base h.29 w/BOX orthopaedic slatted base included suggested weights for mattresses (see flap on the right)	120x200	203x221	CLLD29B										9.5	0.8	124
	135x190	223x211	CLLI29B										9.9	0.82	133
	137x190 DOUBLE 54X75	223x211	CLLE29B										9.9	0.82	133
	140x200	223x221	CLLU29B										10	0.82	133
	150x200	243x221	CLLL29B										10.3	0.84	143
	153x203 QUEEN 60X80	243x224	CLLQ29B										10.3	0.84	143
	160x200	243x221	CLLM29B										10.5	0.85	143
	170x200	253x221	CLLF29B										11	0.87	147
	180x200	263x221	CLLG29B										11.5	0.89	155
	190x200	283x221	CLLP29B										12.5	0.92	167
	193x203 KING 76X80	283x224	CLLK29B										12.5	0.92	167
		Loose cover		R29B										0.02	
available inside height in Box 18cm															
rounded base h.20 - rounded base h.29 w/easy-up BOX orthopaedic slatted base included suggested weights for mattresses (see flap on the right)	120x200	203x221	CLLD29BE										9.5	0.8	134
	135x190	223x211	CLLI29BE										9.9	0.82	143
	137x190 DOUBLE 54X75	223x211	CLLE29BE										9.9	0.82	143
	140x200	223x221	CLLU29BE										10	0.82	143
	150x200	243x221	CLLL29BE										10.3	0.84	153
	153x203 QUEEN 60X80	243x224	CLLQ29BE										10.3	0.84	153
	160x200	243x221	CLLM29BE										10.5	0.85	153
	170x200	253x221	CLLF29BE										11	0.87	157
	180x200	263x221	CLLG29BE										11.5	0.89	165
	190x200	283x221	CLLP29BE										12.5	0.92	177
	193x203 KING 76X80	283x224	CLLK29BE										12.5	0.92	177
		Loose cover		R29BE										0.02	
available inside height in Box 18cm															

Clay Maison Large / Aluminum structure

Standard feet Vasetto - removable headboard cover in fabric and non removable in leather or eco-leather - specify if headboard right or left

	Mattress	Ext. dimension	Code	D	C	A	Plus	Luxury fabric	Luxury leather	Nuvola fabric	Nuvola leather	TCL	Cover			
													ml	mc	kg	
rounded base h.29 without slatted base (to choose a slatted base see flap on the right)	120x200	203x221	CLLD29A										9.5	0.73	73	
	135x190	223x211	CLLI29A										9.9	0.76	77	
	137x190 DOUBLE 54X75"	223x211	CLLE29A										9.9	0.76	77	
	140x200	223x221	CLLU29A										10	0.77	78	
	150x200	243x221	CLLL29A										10.3	0.8	80	
	153x203 QUEEN 60X80"	243x224	CLLQ29A										10.3	0.8	80	
	160x200	243x221	CLLM29A										10.5	0.82	81	
	170x200	253x221	CLLF29A										11	0.84	85	
	180x200	263x221	CLLG29A										11.5	0.86	87	
	190x200	283x221	CLLP29A										12.5	0.92	91	
	193x203 KING 76X80"	283x224	CLLK29A										12.5	0.92	91	
	Loose cover		R29A											0.02	5	
rounded base h.29 w/BOX orthopaedic slatted base included suggested weights for mattresses (see flap on the right)	120x200	203x221	CLLD29BA										9.5	0.92	124	
	135x190	223x211	CLLI29BA										9.9	0.99	128	
	137x190 DOUBLE 54X75"	223x211	CLLE29BA										9.9	0.99	128	
	140x200	223x221	CLLU29BA										10	1	129	
	150x200	243x221	CLLL29BA										10.3	1.04	134	
	153x203 QUEEN 60X80"	243x224	CLLQ29BA										10.3	1.04	134	
	160x200	243x221	CLLM29BA										10.5	1.07	136	
	170x200	253x221	CLLF29BA										11	1.11	142	
	180x200	263x221	CLLG29BA										11.5	1.15	147	
	190x200	283x221	CLLP29BA										12.5	1.2	154	
	193x203 KING 76X80"	283x224	CLLK29BA										12.5	1.2	154	
	Loose cover		R29BA											0.02	5	
rounded base h.29 w/easy-up BOX orthopaedic slatted base included suggested weights for mattresses (see flap on the right)	120x200	203x221	CLLD29BEA										9.5	0.96	134	
	135x190	223x211	CLLI29BEA										9.9	1.03	138	
	137x190 DOUBLE 54X75"	223x211	CLLE29BEA										9.9	1.03	138	
	140x200	223x221	CLLU29BEA										10	1.04	139	
	150x200	243x221	CLLL29BEA										10.3	1.08	143	
	153x203 QUEEN 60X80"	243x224	CLLQ29BEA										10.3	1.08	143	
	160x200	243x221	CLLM29BEA										10.5	1.11	146	
	170x200	253x221	CLLF29BEA										11	1.15	152	
	180x200	263x221	CLLG29BEA										11.5	1.19	157	
	190x200	283x221	CLLP29BEA										12.5	1.25	164	
	193x203 KING 76X80"	283x224	CLLK29BEA										12.5	1.25	164	
	Loose cover		R29BEA											0.02	5	
rounded base h.29 w/HANDS FREE BOX orthopaedic slatted base included suggested weights for mattresses (see flap on the right)	150x200	243x224	CLLL29BHF										10.3	1.08	143	
	153x203 QUEEN 60X80"	243x227	CLLQ29BHF										10.3	1.08	143	
	160x200	243x224	CLLM29BHF										10.5	1.11	146	
	170x200	253x224	CLLF29BHF										11	1.15	152	
	180x200	263x224	CLLG29BHF										11.5	1.19	157	
	190x200	283x224	CLLP29BHF										12.5	1.25	164	
	193x203 KING 76X80"	283x227	CLLK29BHF										12.5	1.25	164	
		Loose cover		R29BEHF											0.02	5

Available on request bedbases for mattresses of 190 cm (surcharge 5%) or 210 cm (15% surcharge) length.
 For other bespoke requests 30% surcharge.

Clay Maison Extra Large / Firwood structure



Standard feet Vasetto - removable headboard cover in fabric and non removable in leather or eco-leather

	Mattress	Ext. dimension	Code	D	C	A	Plus	Luxury fabric	Luxury leather	Nuvola fabric	Nuvola leather	TCL	Cover		
													ml	mc	kg
rounded base h.20 - rounded base h.29 without slatted base (to choose a slatted base see flap on the right)	120x200	263x221	CELD29										10.5	0.54	76
	135x190	283x211	CELI29										10.9	0.56	82
	137x190 DOUBLE 54X75"	283x211	CELE29										10.9	0.56	82
	140x200	283x221	CELU29										11	0.57	82
	150x200	303x221	CELL29										11.3	0.59	88
	153x203 QUEEN 60X80"	303x224	CELQ29										11.3	0.59	88
	160x200	303x221	CELM29										11.5	0.6	88
	170x200	313x221	CELF29										12	0.62	99
	180x200	323x221	CELG29										12.5	0.64	95
	190x200	343x221	CELP29										13.5	0.67	102
	193x203 KING 76X80"	343x224	CELK29										13.5	0.67	102
	Loose cover		R29											0.02	5
rounded base h.20 - rounded base h.29 w/BOX orthopaedic slatted base included suggested weights for mattresses (see flap on the right)	120x200	263x221	CELD29B										10.5	0.8	134
	135x190	283x211	CELI29B										10.9	0.82	143
	137x190 DOUBLE 54X75"	283x211	CELE29B										10.9	0.82	143
	140x200	283x221	CELU29B										11	0.82	143
	150x200	303x221	CELL29B										11.3	0.84	153
	153x203 QUEEN 60X80"	303x224	CELQ29B										11.3	0.84	153
	160x200	303x221	CELM29B										11.5	0.85	153
	170x200	313x221	CELF29B										12	0.87	157
	180x200	323x221	CELG29B										12.5	0.89	165
	190x200	343x221	CELP29B										13.5	0.92	177
	193x203 KING 76X80"	343x224	CELK29B										13.5	0.92	177
	Loose cover		R29B											0.02	5
available inside height in Box 18cm															
rounded base h.20 - rounded base h.29 w/easy-up BOX orthopaedic slatted base included suggested weights for mattresses (see flap on the right)	120x200	263x221	CELD29BE										10.5	0.8	144
	135x190	283x211	CELI29BE										10.9	0.82	153
	137x137 54X75"	283x211	CELE29BE										10.9	0.82	153
	140x200	283x221	CELU29BE										11	0.82	153
	150x200	303x221	CELL29BE										11.3	0.84	163
	153x203 QUEEN 60X80"	303x224	CELQ29BE										11.3	0.84	163
	160x200	303x221	CELM29BE										11.5	0.85	163
	170x200	313x221	CELF29BE										12	0.87	167
	180x200	323x221	CELG29BE										12.5	0.89	175
	190x200	343x221	CELP29BE										13.5	0.92	187
	193x203 KING 76X80"	343x224	CELK29BE										13.5	0.92	187
	Loose cover		R29BE											0.02	5
available inside height in Box 18cm															

Clay Maison Extra Large / Aluminum structure

Standard feet Vasetto - removable headboard cover in fabric and non removable in leather or eco-leather

	Mattress	Ext. dimension	Code	D	C	A	Plus	Luxury fabric	Luxury leather	Nuvola fabric	Nuvola leather	TCL	Cover		kg
													ml	mc	
rounded base h.29 without slatted base (to choose a slatted base see flap on the right)	120x200	263x221	CELD29A										10.5	0.86	78
	135x190	283x211	CELI29A										10.9	0.89	82
	137x190 DOUBLE 54X75	283x211	CELE29A										10.9	0.89	82
	140x200	283x221	CELU29A										11	0.9	83
	150x200	303x221	CELL29A										11.3	0.94	85
	153x203 QUEEN 60X80	303x224	CELQ29A										11.3	0.94	85
	160x200	303x221	CELM29A										11.5	0.95	86
	170x200	313x221	CELF29A										12	0.97	89
	180x200	323x221	CELG29A										12.5	1	92
	190x200	343x221	CELP29A										13.5	1.04	96
	193x203 KING 76X80	343x224	CELK29A										13.5	1.04	96
	Loose cover		R29A											0.02	5
rounded base h.29 w/BOX orthopaedic slatted base included suggested weights for mattresses (see flap on the right)	120x200	263x221	CELD29BA										10.5	1.04	129
	135x190	283x211	CELI29BA										10.9	1.12	133
	137x190 DOUBLE 54X75	283x211	CELE29BA										10.9	1.12	133
	140x200	283x221	CELU29BA										11	1.13	134
	150x200	303x221	CELL29BA										11.3	1.19	139
	153x203 QUEEN 60X80	303x224	CELQ29BA										11.3	1.19	139
	160x200	303x221	CELM29BA										11.5	1.21	141
	170x200	313x221	CELF29BA										12	1.25	147
	180x200	323x221	CELG29BA										12.5	1.29	152
	190x200	343x221	CELP29BA										13.5	1.35	159
	193x203 KING 76X80	343x224	CELK29BA										13.5	1.35	159
	Loose cover		R29BA											0.02	5
rounded base h.29 w/easy-up BOX orthopaedic slatted base included suggested weights for mattresses (see flap on the right)	120x200	263x221	CELD29BEA										10.5	1.08	139
	135x190	283x211	CELI29BEA										10.9	1.16	143
	137x137 54X75	283x211	CELE29BEA										10.9	1.16	143
	140x200	283x221	CELU29BEA										11	1.17	144
	150x200	303x221	CELL29BEA										11.3	1.22	149
	153x203 QUEEN 60X80	303x224	CELQ29BEA										11.3	1.22	149
	160x200	303x221	CELM29BEA										11.5	1.25	151
	170x200	313x221	CELF29BEA										12	1.29	157
	180x200	323x221	CELG29BEA										12.5	1.33	162
	190x200	343x221	CELP29BEA										13.5	1.39	169
	193x203 KING 76X80	343x224	CELK29BEA										13.5	1.39	169
	Loose cover		R29BEA											0.02	5
rounded base h.29 w/HANDS FREE BOX orthopaedic slatted base included suggested weights for mattresses (see flap on the right)	150x200	303x224	CELL29BHF										11.3	1.22	149
	153x203 QUEEN 60X80	303x227	CELQ29BHF										11.3	1.22	149
	160x200	303x224	CELM29BHF										11.5	1.25	151
	170x200	313x224	CELF29BHF										12	1.29	157
	180x200	323x224	CELG29BHF										12.5	1.33	162
	190x200	343x224	CELP29BHF										13.5	1.39	169
	193x203 KING 76X80	343x227	CELK29BHF										13.5	1.39	169
	Loose cover		R29BEHF											0.02	5

bolzan

dimensioni disponibili / available dimensions:

Su richiesta il letto clay è completamente personalizzabile nelle dimensioni, sia in altezza che in larghezza. La testata può essere unica o divisa in più parti. Contattare l'azienda per verificare la fattibilità.

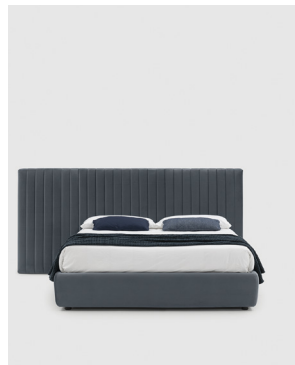
Upon request, Clay bed can be fully customized in terms of both height and width. The headboard can be single or divided into several parts. Contattare l'azienda per verificare la fattibilità.



H 106
H 37⁶/₈"



H 126
H 49⁵/₈"



clay large (+60cm)



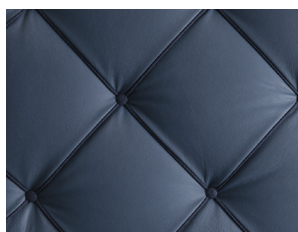
clay extralarge (+60+60cm)



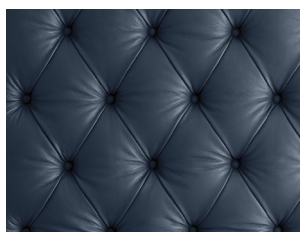
decori disponibili / available decorations:

Per la testata sono disponibili 7 decori standard, tra cui serif, l'innovativo decoro laser su velluto con il quale è possibile realizzare anche grafiche personalizzate che rendono unico il letto. Preventivo e fattibilità su richiesta.

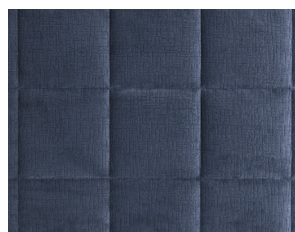
Seven standard decorations are available for the headboard, including serif, the innovative laser decoration on velvet with which it is also possible to create customized graphics that make the bed unique. Quotation on request.



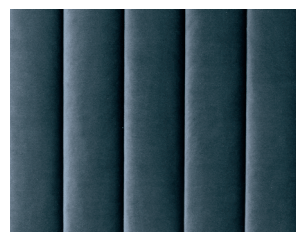
capitonné contraste



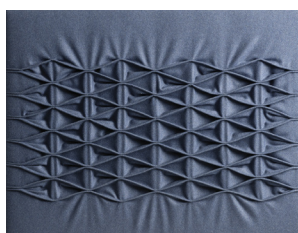
capitonné



vittoria



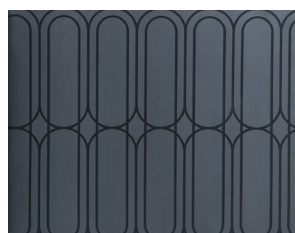
maison



nido



sheen



serif (modulo/modul 62cm)



serif - dettaglio/detail

GIROLETTI E PIEDINI / BEDFRAMES AND FEET

bedframe h.9 cm



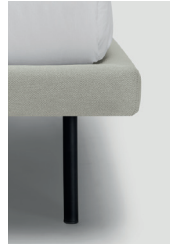
cilindro
H 26 cm 10²/₈"



vasetto
H 26 cm 10²/₈"



vasetto inclinato
H 26 cm 10²/₈"



tubino
H 26 cm 10²/₈"



lamina
H 26 cm 10²/₈"



arco
H 26 cm 10²/₈"

bedframe h.20 cm



cilindro
H 12,5 cm 4⁷/₈"



vasetto
H 12,5 cm 4⁷/₈"



tubino
H 12,5 cm 4⁷/₈"



lamina
H 15 cm 5⁷/₈"

bedframe h.29 cm



vasetto h. 4cm
H 4 cm 1⁵/₈"



vasetto h. 9-12,5 cm
H 9 cm 3⁴/₈"
H 12,5 cm 4⁷/₈"



cipolla
H 8 cm 3¹/₈"

pedini in legno / wooden feet:

pedini realizzati in legno di pincopallo con possibilità di essere tinti, verniciati ral o foderati in tessuto a scelta.

pedini realizzati in legno di pincopallo con possibilità di essere tinti, verniciati ral o foderati in tessuto a scelta.

finiture legno tinto / lacquered wood finishes:



noce / walnut



ciliegio / cherry



rovere / oak



wengè

pedini in metallo / metal feet:

pedini realizzati in acciaio con possibilità di essere verniciati effetto ottone o colori ral.

pedini realizzati in acciaio con possibilità di essere verniciati effetto ottone o colori ral.

finiture metallo / metal finishes:



ottone satinato /
brushed brass

finiture laccati ral / ral lacquered finishes:



bianco / white
RAL 9010



perla / pearl
RAL 1013



nero / black
RAL 9011



grigio / grey
RAL 7044



marrone / brown
RAL 8019



rosso / red
RAL 3005



verde / green
RAL 6020



blu / blue
RAL 5008

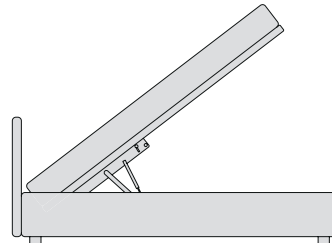
h. 20-29 SISTEMA CONTENITORE / BOX SYSTEM



box

BOX

apertura basic del box grazie ad un semplice sistema a leva / basic opening of storage box thanks to a simple lever system



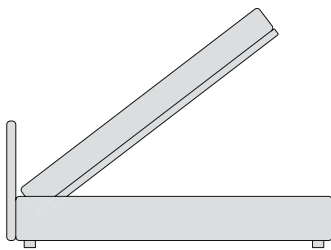
interno in legno



interno in alluminio

HANDS-FREE

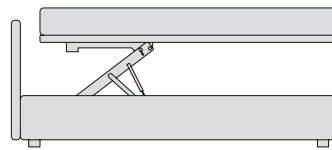
apertura del box senza l'uso delle mani e grazie al box completamente in alluminio è privo di pistoncini a vista / The mechanism allows to open the storage box without hands, and thanks to its aluminum structure, the storage box has inner pistons, thus maintaining a top-notch design



interno in alluminio

EASY UP

grazie al movimento che mantiene la rete all'interno dello spazio occupato dal letto, ottimizza lo spazio all'interno della stanza / mechanism optimizes the space inside the room thanks to its movement that keeps the slatted base within the space occupied by the bed



interno in legno

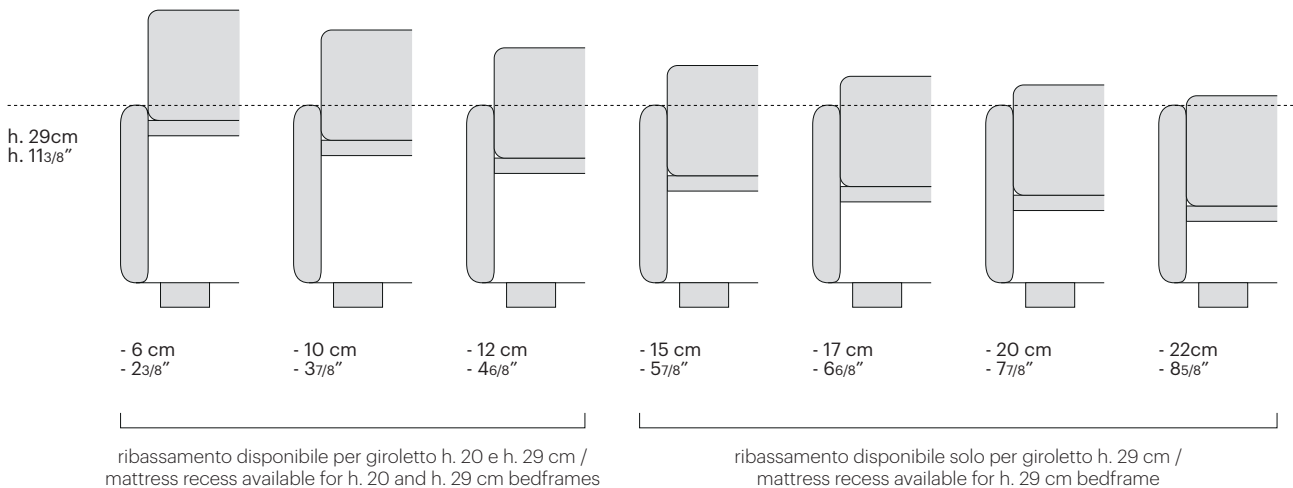


interno in alluminio

h. 20-29 INCASSO MATERASSO / MATTRESS RECESS

La struttura dei letti Bolzan permette di soddisfare le diverse esigenze di progettazione: l'incasso del materasso nella struttura del letto è personalizzabile in 7 altezze diverse. Non disponibile per le basi con box.

Bolzan beds' structure allows you to meet different design needs: the mattress recess in the bed's structure is customizable in 7 different heights. It is not available for bases with box.



INFORMAZIONI SUI MATERIALI

Legno

Tutto il legname proviene da produttori certificati PEFC/CTM, ciò significa che il legno proviene da piantagioni di riforestazione, dove ogni pianta utilizzata viene sostituita da una nuova per non distruggere l'ambiente anzi aumentandone l'apporto di ossigeno all'interno dell'atmosfera.

Bolzan Letti, da sempre particolarmente attenta alla politica ambientale e al perseguimento di nuovi obiettivi di miglioramento del proprio prodotto anche e soprattutto in termini di tutela della salute delle persone, ha già scelto di andare oltre, acquistando solo pannelli compensati certificati CARB e CARB2. Destinati a tutta la produzione e non solo ai prodotti da immettere sul mercato Usa.

Alluminio 100% riciclabile

Resistente, leggero e durevole, l'alluminio non si altera nel tempo e può essere fuso e riciclato all'infinito, con un ridotto consumo di energia, senza perdere le sue caratteristiche originali. Ecco perché si può definire un materiale eco-sostenibile per eccellenza, a vantaggio della qualità della vita di oggi e di domani.

Gommapiuma e rivestimento interno

Dal sapiente taglio dei blocchi di gomma nascono tutte le imbottiture. Nelle imbottiture è fondamentale saper scegliere le varie densità di gomma in quanto ogni parte del letto risponde ad esigenze estetiche-funzionali diverse. L'uso di poliuretano espanso ad alta densità ed indeformabile garantisce comfort e durata. Tutti gli imbottiti vengono foderati con dacron accoppiato a velfodera resistente alla luce ed ignifuga, secondo le normative standard mondiali.

Materiali riciclati/riciclabili

È stata posta attenzione anche alle imbottiture, realizzate prevalentemente in schiumati riciclabili. Il poliuretano espanso flessibile, comunemente noto come "gommapiuma", rappresenta l'imbottitura in assoluto più utilizzata, grazie alla vasta gamma disponibile per formati e densità. Le rimanenze vengono riconvertite in lastre di agglomerato espanso che vengono interamente riutilizzate all'interno della produzione annullando gli scarti di materia prima.

Colle atossiche

La colla utilizzata è a base d'acqua per ridurre la presenza di solventi sintetici. I vantaggi dell'utilizzo della vernice all'acqua, si esprimono nella grande sostenibilità e limitato impatto ambientale nell'uso di questo prodotto. Grazie all'utilizzo delle vernici e colle all'acqua è infatti possibile ridurre del 95 per cento le emissioni nell'ambiente di composti organici volatili (COV), diversamente dall'impiego di comuni vernici a solvente. Altro vantaggio relativo all'utilizzo di colle ad acqua, è che questi prodotti sono completamente inodore, non infiammabili e caratterizzati da livelli di tossicità estremamente limitati.

Materiali alternativi / cocco

La ricerca continua e la volontà di innovare in maniera sostenibile ha portato l'azienda a utilizzare materiali alternativi come le lastre di cocco che compongono l'imbottitura dei letti. La fibra di cocco viene raccolta dall'omonimo albero in India, Sri Lanka, Indonesia, Brasile. Le fibre di cocco vengono impregnate con lattice naturale. L'amalgama risultante (il cocco gommato) viene vulcanizzato e successivamente sagomato in lastre di varie formati, spessori e densità. È possibile inoltre avere lastre sagomate con canali trasversali atti a favorire un'ulteriore traspirabilità. Rispetto ad altri materiali, l'impiego del cocco nella lavorazione di imbottiti ha il vantaggio, di un facile e rapido confezionamento del prodotto, dato che le lastre in cocco gommato possono essere incollate, graffettate e cucite mantenendo inalterata la loro caratteristica principale che è la robustezza: non si sfaldano nel tempo, non provocano polvere, non assorbono umidità. Oltre a ciò si presta ad essere utilizzato all'interno di poltrone e materassi raggiungendo il 20% di peso in meno.

Materiali alternativi / ovatta

L'ovatta contribuisce a garantire il benessere della persona durante il riposo, restando a contatto con il corpo insieme al tessuto e determinando una piacevole sensazione di comfort. Bolzan Letti dedica a questo materiale la stessa attenzione che rivolge alla costruzione delle strutture interne. L'ovatta di lana ha una microstruttura formata da una fitta rete di fibre che dona all'imbottitura naturali doti di traspirabilità, indeformabilità e durata nel tempo. L'ovatta di poliestere è un materiale non solo soffice, indeformabile, resistente, ipoallergenico, inattaccabile da acari e muffe e idrorepellente, ma anche ecosostenibile. È infatti composta al 75% da fibre provenienti dal riciclo di bottiglie di plastica e quindi è a sua volta facilmente riciclabile. Inoltre è certificata Oeko-Tex Classe 1 e ciò garantisce l'assenza di sostanze nocive.

Tessuti

I tessuti sostenibili sono il risultato di processi produttivi industriali ecocompatibili, basati sulla riduzione di consumi energetici, sull'utilizzo di fonti di materie prime rinnovabili, sull'ottimizzazione della catena produttiva capace di ridurre l'impiego di prodotti chimici anche grazie a nuove soluzioni basate sulla biochimica e all'utilizzo delle biotecnologie.

- **Tessuti FSC** Numerosi tessuti della collezione Bolzan Letti sono marchiati FSC. Questi tessuti sono più rispettosi dell'ambiente rispetto alle fibre sintetiche o al cotone in quanto le fibre di cellulosa di cui sono fatti provengono da foreste gestite in maniera corretta e sostenibile.

- **Tessuti OEKO** L'Oeko-Tex Standard 100 è uno standard unico di certificazione e controllo nel settore delle materie prime tessili, dei semilavorati e dei prodotti finiti in tutte le fasi di lavorazione, che permette di identificare quei prodotti che non presentano alcun rischio per la salute del consumatore.

- **Tessuti PEFC** Il marchio PEFC significa che proviene da una foresta certificata (ovviamente, solo il materiale di origine forestale e arborea contenuto nel prodotto). Una foresta PEFC è una foresta gestita in linea con i più severi requisiti ambientali, sociali ed economici. Una foresta che ci sarà anche per le generazioni future.

Pelle

Bolzan Letti utilizza esclusivamente pelli di alta qualità, provenienti da concerie selezionate e prodotte con trattamenti che rispettano l'ambiente. Il fascino e il prestigio naturali di questa materia prima, capace di donare emozioni uniche al tatto e alla vista, sono ulteriormente valorizzate da un controllo di qualità accurato che oltre all'utilizzo di moderne tecnologie, prevede l'intervento di occhi e mani esperte, per scartare tutte le parti non idonee alle lavorazioni e garantire un risultato finale perfetto.

Imballo

Un'attenzione particolare è riservata al packaging sostenibile. Ridurlo all'essenziale per diminuire la quantità di rifiuti o utilizzare materiali naturali, biodegradabili e riciclabili è diventato un elemento importante per Bolzan Letti, che vede la sostenibilità come un valore aggiunto dei propri prodotti. Bolzan Letti ha abbandonato plastiche e polistirolo a favore degli imballaggi in cartone 100% riciclabile: cartone semplice e a nido d'ape. Le scatole contenitive sono inoltre realizzate da un nuovo macchinario che prepara imballi ad hoc a seconda delle dimensioni del prodotto riducendo al minimo gli sprechi. Per trasporti internazionali vengono utilizzati anche imballaggi in legno per proteggere al meglio il prodotto Bolzan.

Wood

All wood comes from certified PEFC/CTM producers, which means that wood comes from reforestation plantations, where every used tree is replaced by a new one to avoid destroying the environment and thus increasing its oxygen supply to the atmosphere.

Thanks to its deep attention to environmental policy and the pursuit of new objectives for the improvement of its product, especially in terms of the protection of human health, Bolzan Letti has already chosen to go further, buying only CARB e CARB2 certified plywood panels, for all production and not only for products to be placed on the US market.

100% recyclable aluminium

Aluminium is resistant, lightweight and durable. Its features do not change over time and allow it to be recycled infinitely, with a limited energy consumption, and without risking the loss of its original characteristics. That is the reason why it can be defined the eco friendly material for excellence, and represents the beginning of a better quality of life for future generations.

The foam rubber and the inner lining

From the clever cutting of the foam blocks all the paddings are formed. In the paddings it is essential to know how to use different foam densities as each part of the bed responds to different aesthetic-functional requirements. The use of high-density and non-deformable polyurethane foam guarantees comfort and durability. All the padded parts are lined with dacron coupled with flame retardant and light resistant velfodera (fibre-lining), according to world standard laws.

Recycled / recyclable materials

Attention was also paid to the padding, made mainly of recyclable foams. The flexible polyurethane foam, commonly known as "foam rubber", represents the most widely used padding, thanks to its wide availability for sizes and densities. The surplus are reconverted into expanded agglomerate slabs that are entirely reused within our production, thus eliminating raw material waste.

Non-toxic glues

We use water-based glue to reduce the presence of synthetic solvents. The advantages of using this water-based stain in its great sustainability and limited environmental impact. Thanks to the use of water-based components, it is in fact possible to reduce the emissions of volatile organic compounds (VOCs) by 95 percent, compared to the use of common solvent-based paints. Another advantage related to their use is that these products are completely odorless, non-flammable and characterized by extremely limited toxicity levels.

Alternative materials / coconut

The continuous research and the will to innovate in a sustainable way led the company to use alternative materials such as the coconut slabs to make up the padding of the bed. Coconut fibers are impregnated with natural latex: the resulting amalgam (the rubberized coconut) is vulcanized and subsequently shaped into slabs of various sizes, thicknesses and densities. It is also possible to have shaped slabs with transverse channels to favor further breathability.

Compared to other materials, the use of coconut in the processing of upholstered furniture has the advantage of an easy and quick product packaging, since the rubberized coconut sheets can be glued, stapled and sewn while maintaining their main characteristic which is the same: robustness: they do not flake off over time, do not cause dust, do not absorb moisture. In addition, it is suitable to be used inside armchairs and mattresses, reaching 20% less weight.

Alternative materials / wadding

The wadding helps to ensure the well-being of the person during rest, remaining in contact with the body together with the fabric and creating a pleasant sensation of comfort. Bolzan Letti pays the same attention to this material as it does to the construction of inner structures. The wool wadding has a microstructure formed by a dense network of fibers giving the padding natural qualities of breathability, non-deformability and durability. Polyester wadding is not only a soft, non-deformable, resistant, hypoallergenic material, resistant to mites and molds and water-repellent, but also eco-sustainable. In fact, it is usually made up of 75% fibers from the recycling of plastic bottles and is therefore easily recyclable.

Fabrics

Sustainable fabrics are the result of environmentally friendly industrial production processes, based on the reduction of energy consumption, on the use of renewable raw material sources, and on the optimization of the production chain capable of reducing the use of chemical products also thanks to new solutions based on biochemistry and the use of biotechnology.

- **FSC fabrics** Numerous fabrics from the Bolzan collection are FSC branded. These fabrics are more environmentally friendly than synthetic fibers or cotton since the cellulose fibers they are made of come from forests that are managed correctly and sustainably.

- **OEKO fabrics** The Oeko-Tex Standard 100 is a globally uniform testing and certification system for textile raw materials, intermediate and end products at all stages, which allows to identify those products that do not present any risk to the health of the consumer.

- **PEFC fabrics** The PEFC mark means that the good comes from a certified forest (obviously, only the material of forest and arboreal origin contained in the product). A PEFC forest is a forest managed in line with the strictest environmental, social and economic requirements. A forest that will also be there for future generations.

Leather

Bolzan Letti uses only high quality leathers, from selected tanneries and produced with treatments that respect the environment. The natural charm and prestige of this raw material, capable of giving unique emotions to the touch and sight, are further enhanced by an accurate quality control which, in addition to the use of modern technologies, involves the intervention of expert eyes and hands, to discard all parts not suitable for processing and guarantee a perfect final result.

Packaging

Special attention is paid to sustainable packaging. Reducing it to the essential to decrease the amount of waste or the use of natural, biodegradable and recyclable materials has become an important element for Bolzan, which sees sustainability as an added value to its product system. Bolzan Letti has abandoned plastics and polystyrene in favor of 100% recyclable cardboard packaging. For all packaging there is the exclusive use of simple and honeycomb cardboard, instead of polymeric materials such as polystyrene. The containment boxes are also made from a new machine preparing ad hoc packaging according to the product size, thus waste is minimized. For international transport, wooden packaging is also used to better protect Bolzan products.