

MIDJ



Ola P M Armchair

design Paolo Vernier, 2016

Ola armchair with frame and shell in laquered metal, suitable for outdoor use.

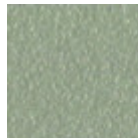
It is stackable up to four units.

Colors and Materials

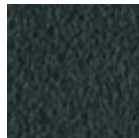
Structure



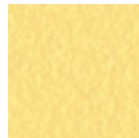
White steel



Sand steel



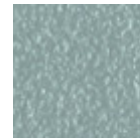
Grafite metal



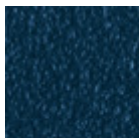
Pastel yellow steel



Black steel



Light blue metal



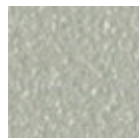
Ocean blue steel



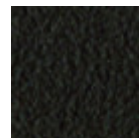
Bronze metal



Fango steel



Light grey steel



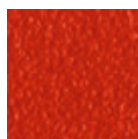
Brown steel



Ocher steel



Facepowder pink metal

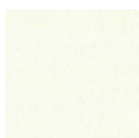


Red steel

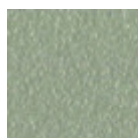


Sage green metal

Coating



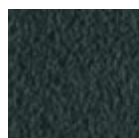
White steel



Sand steel



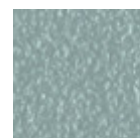
Pastel yellow steel



Grafite metal



Black steel



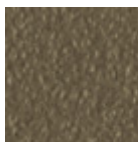
Light blue metal



Ocean blue steel



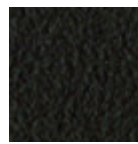
Bronze metal



Fango steel



Light grey steel



Brown steel



Ocher steel



Facepowder pink metal

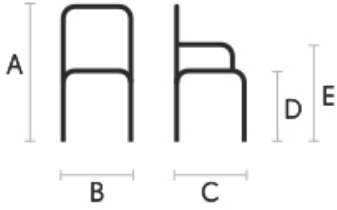


Red steel



Sage green metal

Dimensions



	cm	inch
A	82	32.3
B	52	20.5
C	54	21.3
D	45	17.7
E	65	25.6

Volumetric Details

Weight 7.25 Kg

Volume 0.32 mc

Package 1