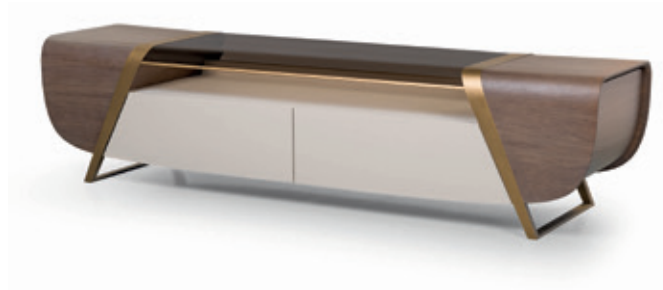


MELTING LIGHT Tv unit

Designer: Frank Jiang
Year: 2018



DESCRIPTION

The TV unit of the Melting Light collection has a wooden structure with two front drawers covered in leather and two comfortable removable containers housed on the sides. The legs, inclined outwards, are made of brushed gold metal. The Melting Light sideboard is available in different finishes as per sample book.



MELTING LIGHT Tv unit

Designer: Frank Jiang

Year: 2018

TECHNICAL:

Structure: MDF, plywood, solid wood and walnut veneered wood particle panels / **Open compartment:** in bronzed glass and leather application / **Drawers:** two side flap drawers in wood and two central sliding drawers with leather application. Internal covering in microfiber / **Details and legs:** metal in Brushed Gold or Brushed Bronze finish.

DRAWINGS:

measures in cm and inch

