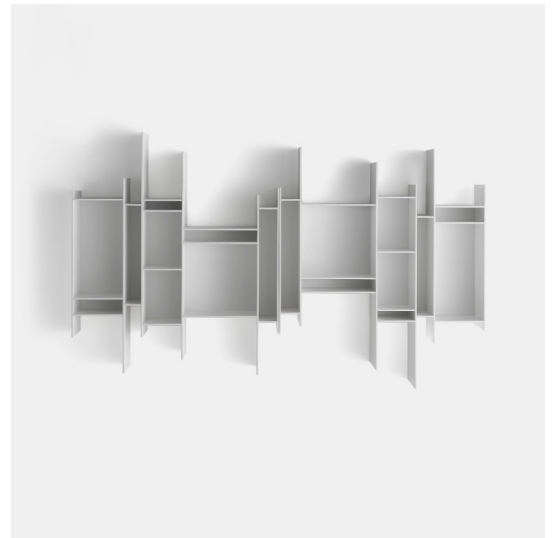


mdf italia



© COPYRIGHT 2023 MDF ITALIA SRL SOCIETA' UNIPERSONALE

2011

RANDOMITO

Designed by Neuland Industriedesign

A graphic sign on the wall that catches the eye. A small but endearing hanging bookcase, able to confer dynamism to any environment and embellish it as an artwork. This is the main feature of Randomito, whose single and vertically reversible module can be used both individually and by aggregation, thus getting plenty of customised configurations. Also the color palette has been added more shades over the years: not only pure white but other shades, including pastel ones.

Neuland Industriedesign conceived a bookcase evoking movement and lightness, whose silhouette is unmistakable: one in a kind, it is inspired to the "progenitor" Random, representing one of its evolutionary paths. Wonderful in residential contexts, Randomito lends itself excellently to business spaces.

THE PLUS OF RANDOMITO:

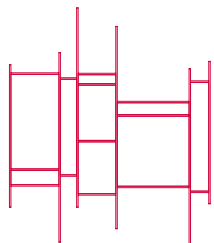
- . Remarkable visual impact
- . Possibility to create different configurations
- . Wide color range
- . Like a work of art, it embellishes the space.

FRAMEWORK

A hanging bookcase made of wood fibreboards, with matt lacquer (micro-goffered) white, light grey, powder pink, medium olive and medium powder blue.

Uprights and shelves in thickness 6 mm; back made from melamine-coated board. By flanking or by designing your own from scratch, you can create large-sized configurations of great impact.

RANDOMITO



L81.6 D20 H96 cm

Finishing

The number in the dot corresponds to the number of colour/material finish.

Here below, in the section FINISH OPTIONS, please note all the colours of the materials used for this product.

BOOKCASE

Structure



Matt lacquered

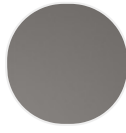
Finish options

STRUCTURE

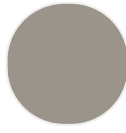
Matt lacquered



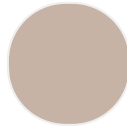
Matt
lacquered
white X042



Matt
lacquered
medium grey
X093



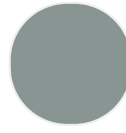
Matt
lacquered light
grey



Matt
lacquered
powder pink



Matt
lacquered
medium olive
green



Matt
lacquered
medium
powder blue