



Side tables available in different dimensions.

Structure: AISI 304 stainless steel matt varnished in avorio or grigio lava colour, plastic spacers.

Support surface: aluminium matt varnished in a colour matching the structure.

Top: composed of hand painted square majolica elements.

The tops of the Segni side tables are made and decorated by hand with exclusive colours by Nicolò Morales.

Notes:

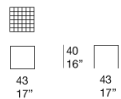
The top of the 43x43 cm side table can be composed of 3,5x3,5 cm elements (B152E) or 7x7 cm elements (B152F); the top of the 63x63 cm side table can be composed only of 7x7 cm elements (B152B).

The decorations are made by hand. The material, the particular handwork and the production technique lead to colour and design differences between tables, even from the same batch and typology. Irregularity is the featuring characteristic of these working techniques.

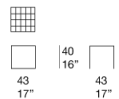
This product can be used also in interior environments.

We advise to use a Winter Set protection cover.

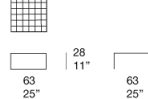
B152E



B152F



B153B

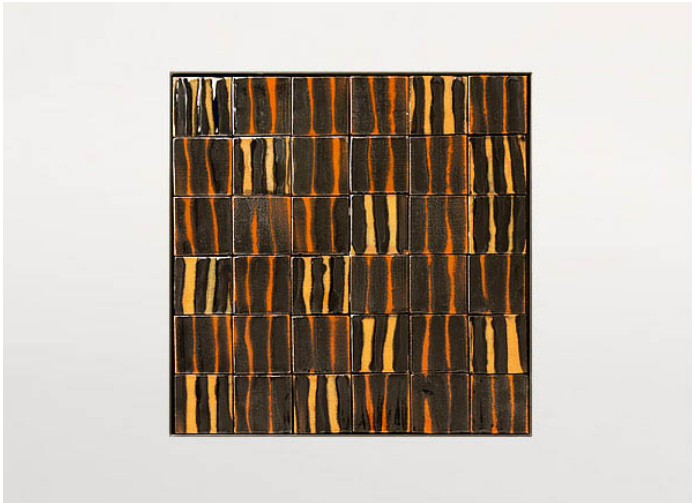




PMS127



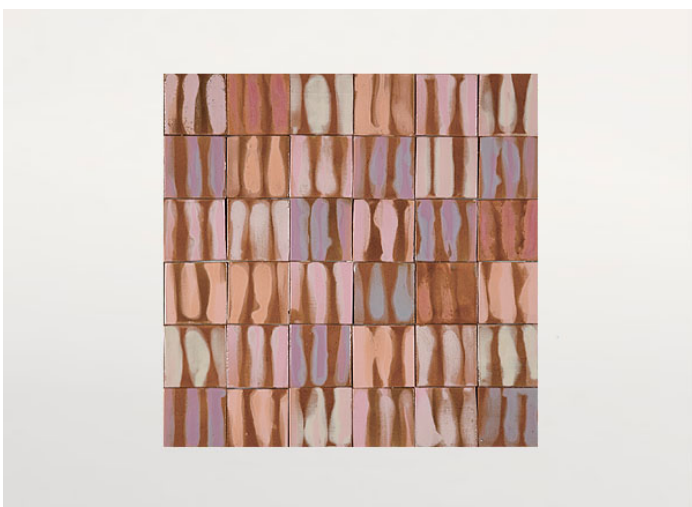
PML127



PML125



PMS126



PML126