



Navajo is a modular rug for exterior and interior environments created by sewing together lengthwise a variable number of braids.

The extremities of each braid are finished with a fringe which is always featured on the short side of the rug.

The braids are all in the same mélange colour but feature different patterns which are repeated on the rug surface according to a pre-determined scheme.

Only one mélange colour can be chosen.

The textile structure of this rug is free: an intense stepping may cause a variation of the rug's dimension.

We advise against the use of Navajo in very humid or rainy environments.

TANV01



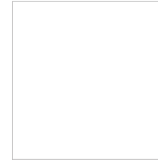
cm 200 x 200
79" x 79"

TANV02



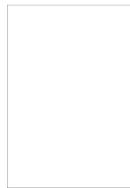
cm 200 x 240
79" x 94"

TANV03



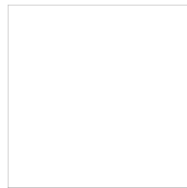
cm 240 x 240
94" x 94"

TANV04



cm 200 x 300
79" x 118"

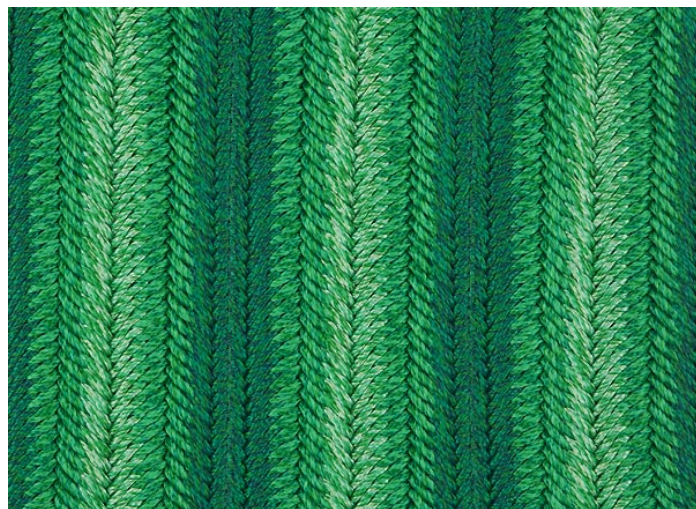
TANV05



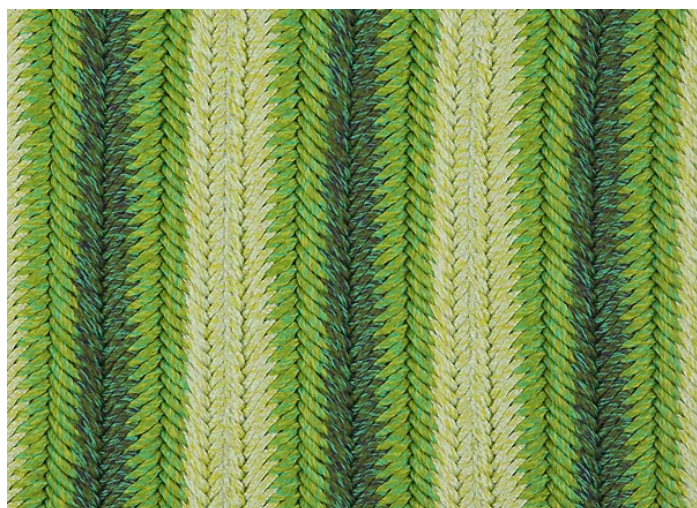
cm 300 x 300
118" x 118"



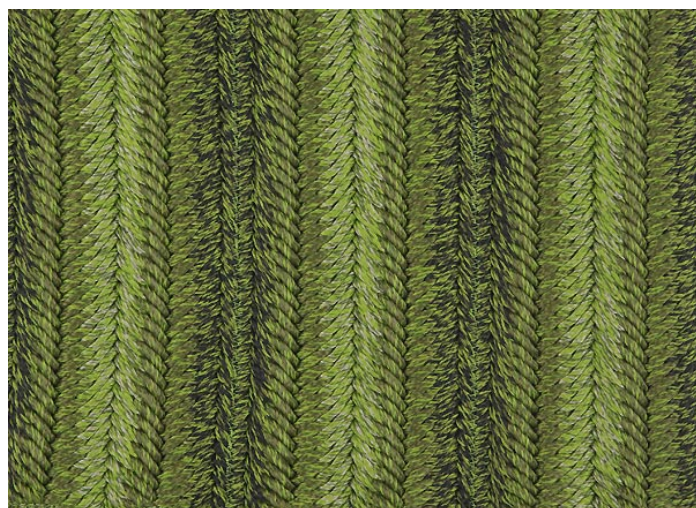
NV778



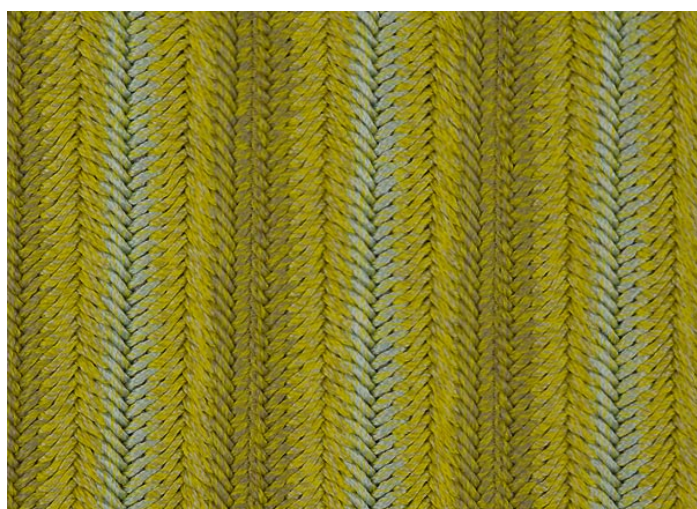
NV765



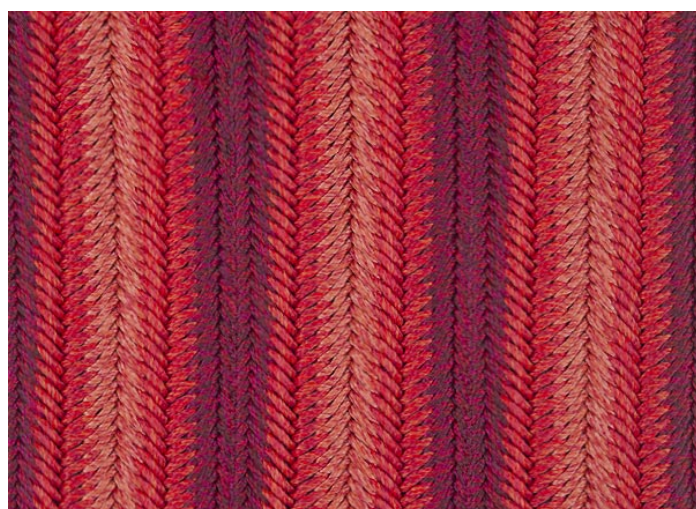
NV783



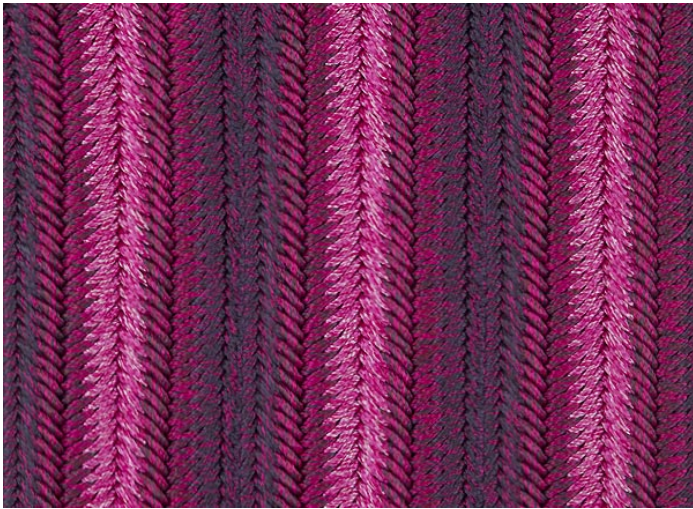
NV764



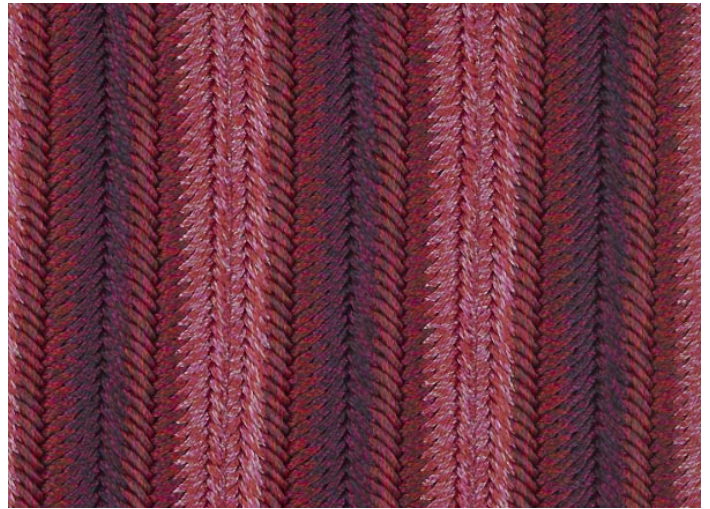
NV758



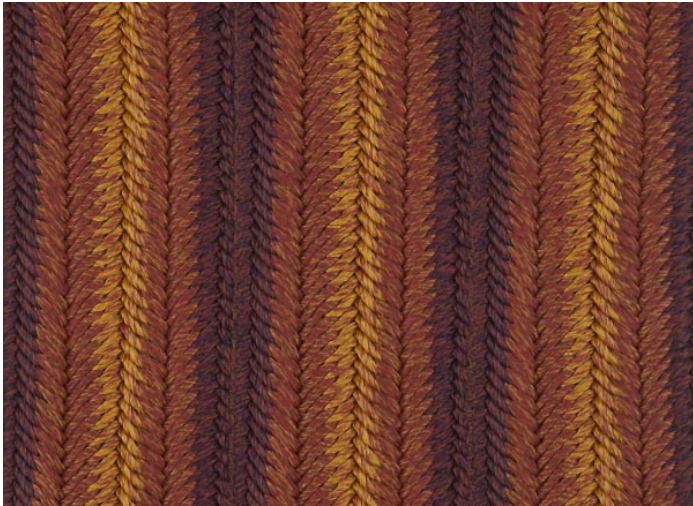
NV773



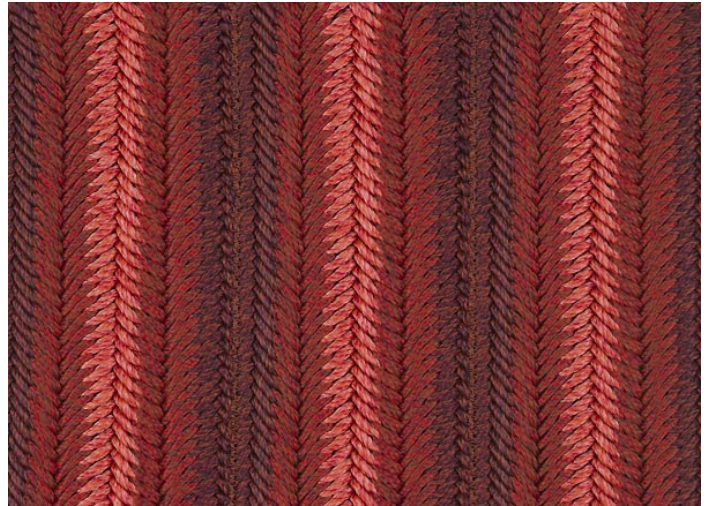
NV775



NV784



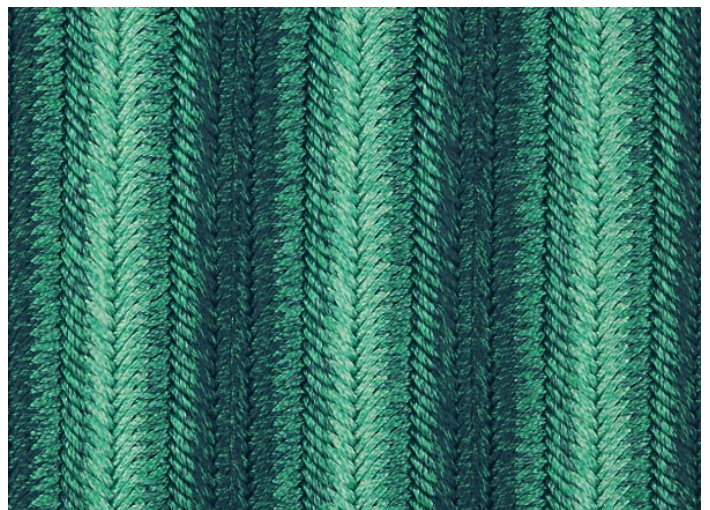
NV774



NV755



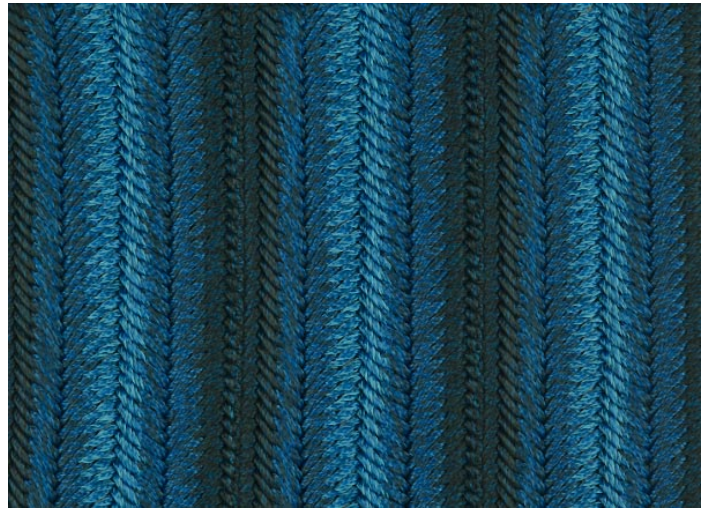
NV769



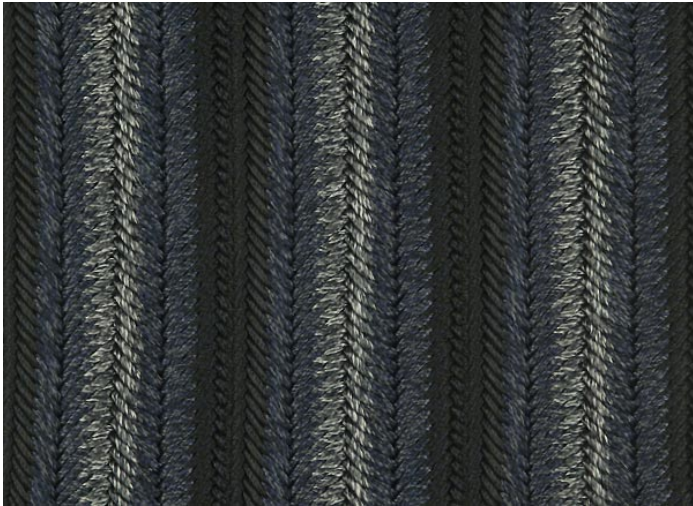
NV759



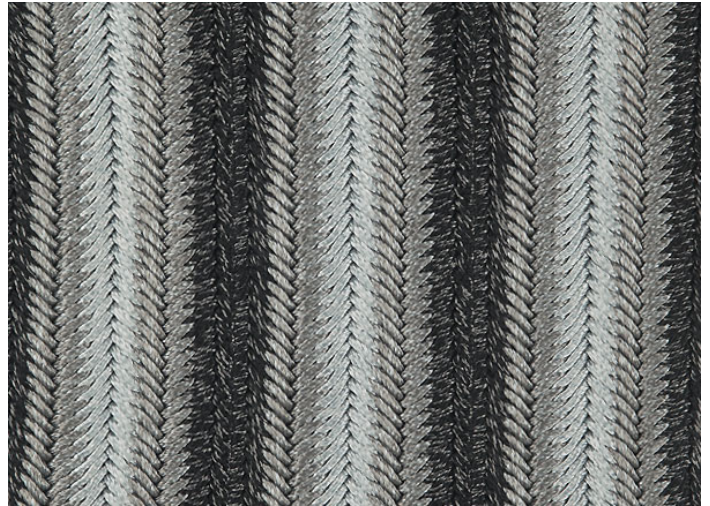
NV768



NV767



NV756



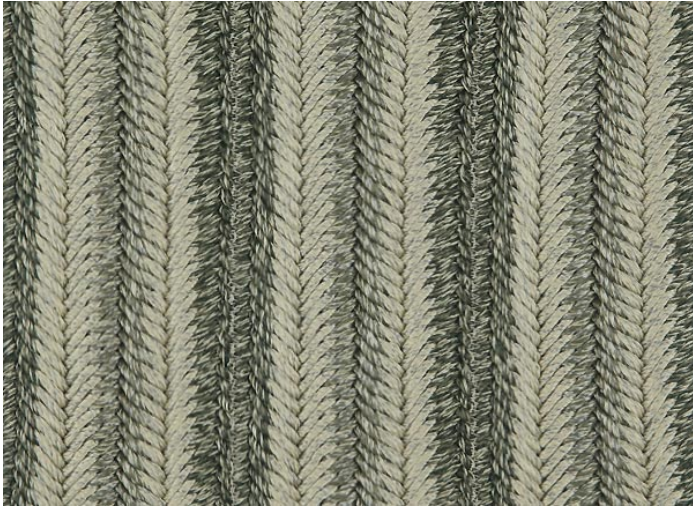
NV754



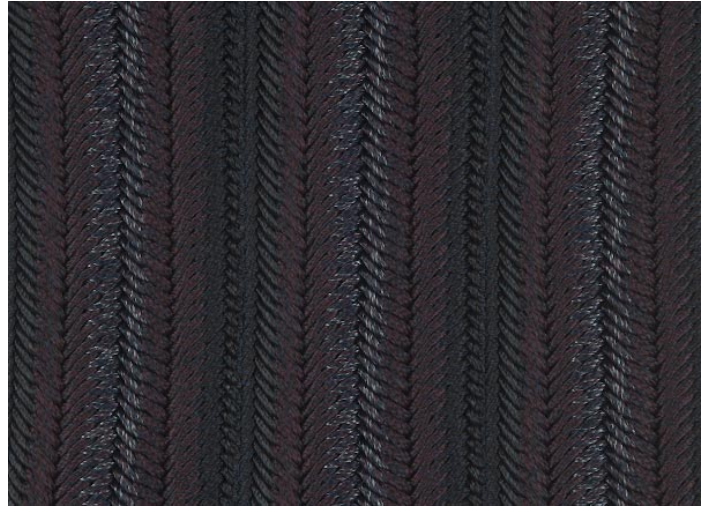
NV757



NV766



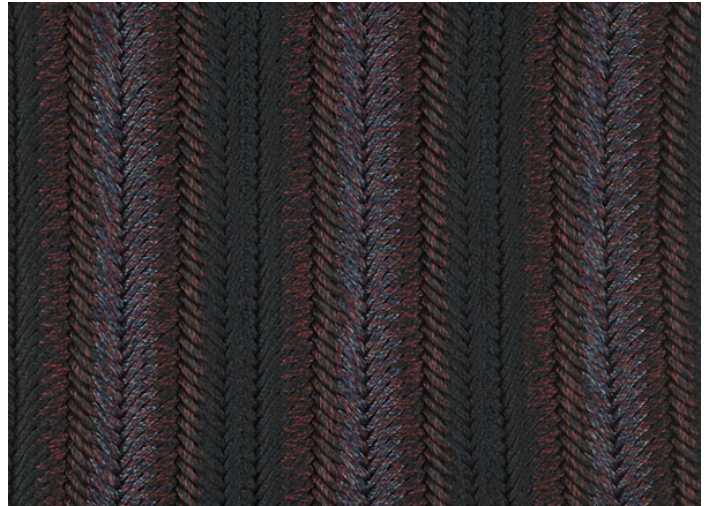
NV776



NV777



NV763



NV753