

Ray is a modular rug for exterior and interior environments available in two different versions.

The surface of the rug can be created either joining lengthwise cm 12 wide braids in solid or *mélange* colours or alternating braids in the same width and one- or two-colour cords in the same yarn.

In this version, the borders corresponding to the braids extremities are finished with a ribbon in the same yarn, in the prevailing colour of the rug.

Only one *mélange* tone for the braids and one colour for the cords can be chosen.

The width of the braids used for this version may vary between 10,5-12 cm, due to the braiding technique: the dimension of the short side is determined by the multiple of the braids and will often vary.

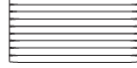
The texelement structure of this rug is free: an intense stepping may cause a variation of the rug's dimension.

TRA12 senza corde / without cords



da cm 94,5 a 108 x 200  
from 37" to 43" x 79"

TRA12C con corde / with cords



da cm 102,5 a 116 x 200  
from 40" to 46" x 79"

TRA13 senza corde / without cords



da cm 94,5 a 108 x 240  
from 37" to 43" x 94"

TRA13C con corde / with cords



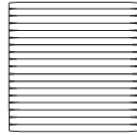
da cm 102,5 a 116 x 240  
from 40" to 46" x 94"

TRA14 senza corde / without cords



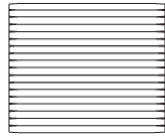
da cm 189 a 216 x 200  
from 74" to 85" x 79"

TRA14C con corde / with cords



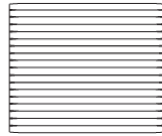
da cm 206 a 233 x 200  
from 81" to 92" x 79"

TRA15 senza corde / without cords



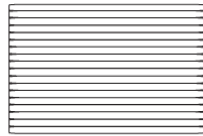
da cm 189 a 216 x 240  
from 74" to 85" x 94"

TRA15C con corde / with cords



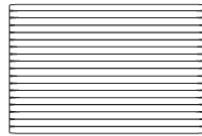
da cm 206 a 233 x 240  
from 81" to 92" x 94"

TRA16 senza corde / without cords



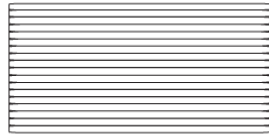
da cm 189 a 216 x 300  
from 74" to 85" x 118"

TRA16C con corde / with cords



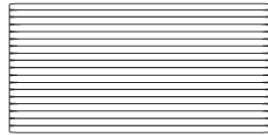
da cm 206 a 233 x 300  
from 81" to 92" x 118"

TRA17 senza corde / without cords

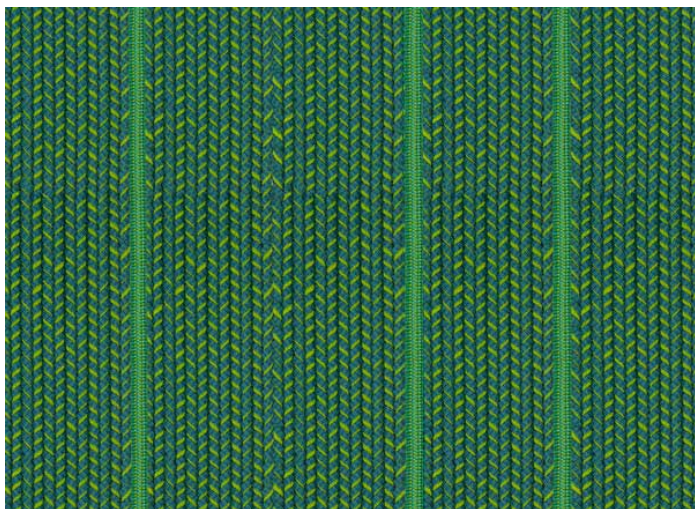


da cm 189 a 216 x 400  
from 74" to 85" x 157"

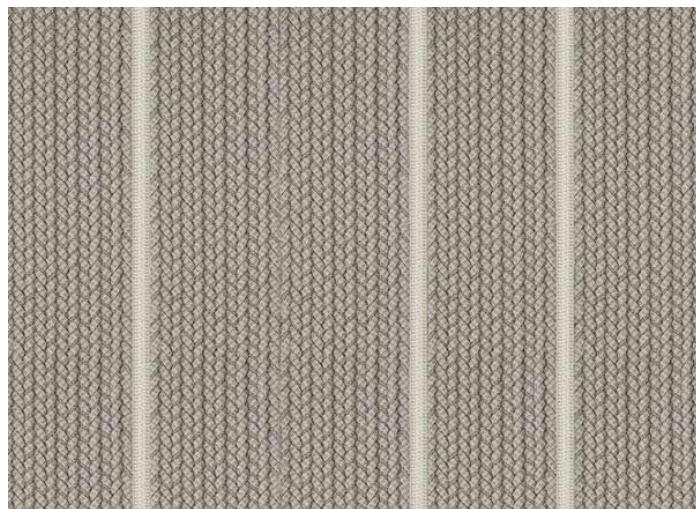
TRA17C con corde / with cords



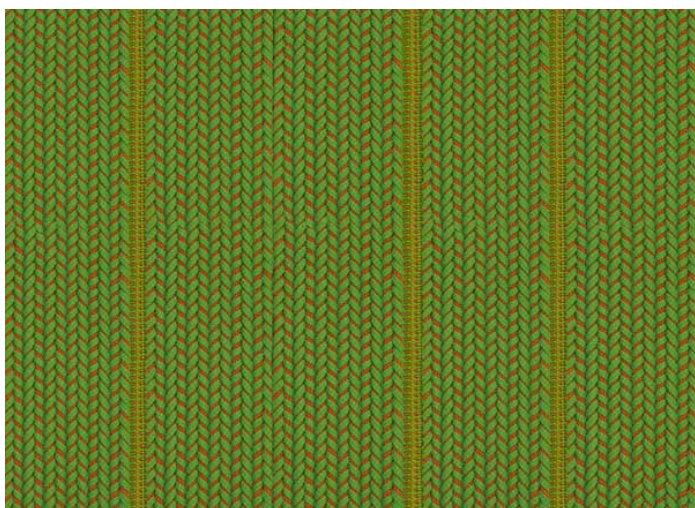
da cm 206 a 233 x 400  
from 81" to 92" x 157"



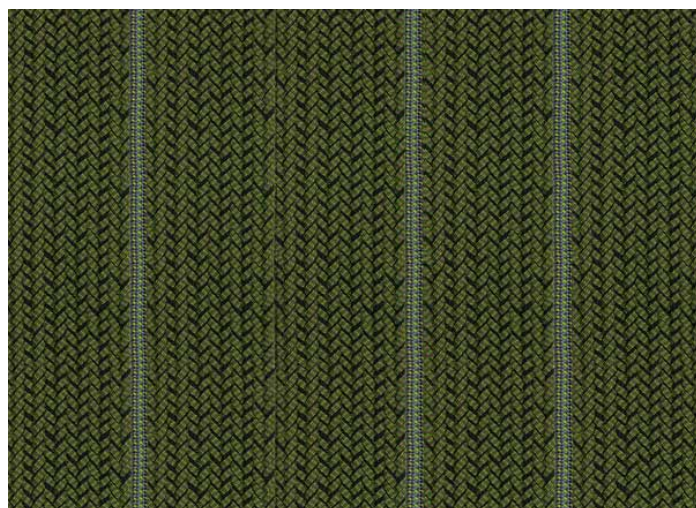
2. R286258 / T6206



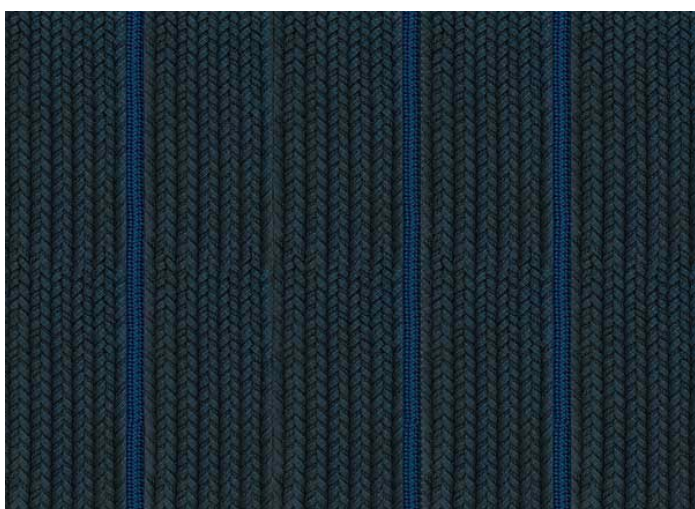
1. R193782 / T3729



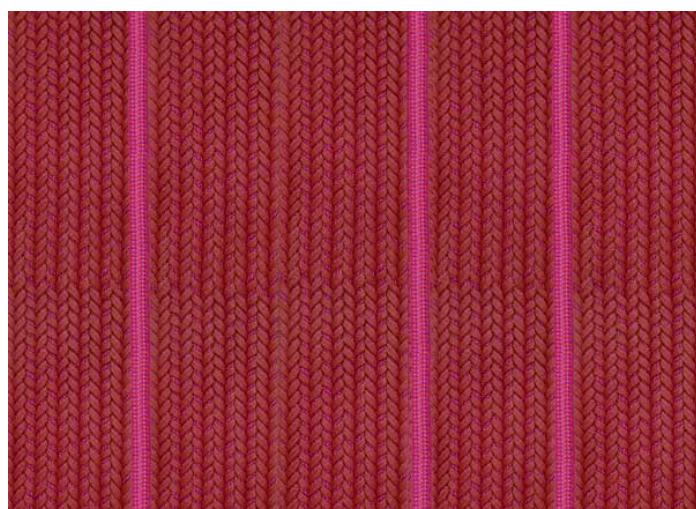
3. R032831 / T2811



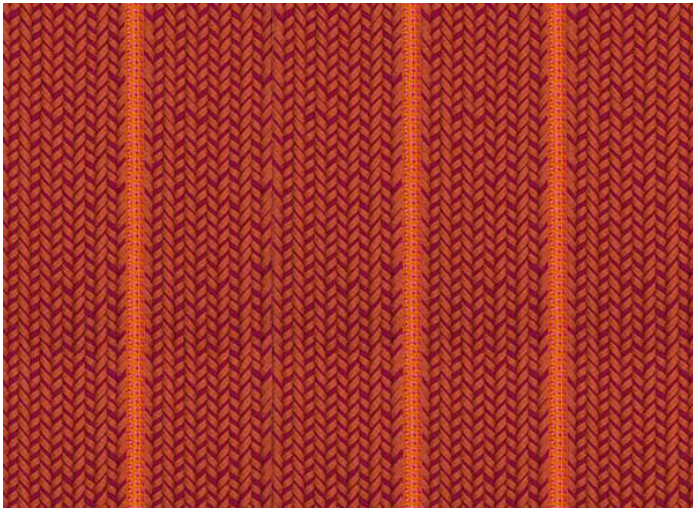
4. R831328 / T1328



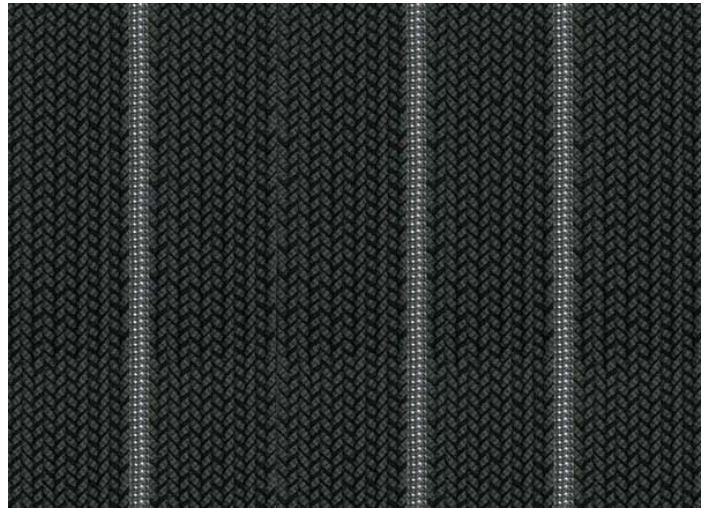
7. R343426 / T0626



6. R665611 / T6656



5. R660315 / T0315



9. R170712 / T0729



8. R342034 / T1712