

Anwar

Designed by Stephen Burks



PARACHILNA

hello@parachilna.eu
www.parachilna.eu
+34 93 630 7772

ANWAR T COMBI. - TOP 45 / BOTTOM 90

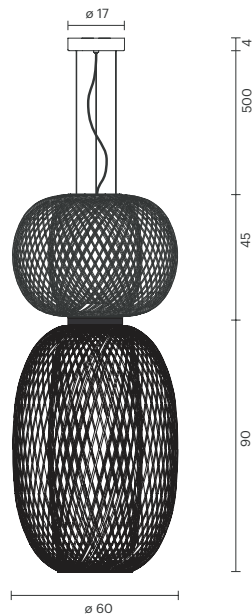
Stephen Burks, 2013

Suspension lamp. The structures Anwar 30, 45 and 90 combined between two of them, regardless of the position or finish. Two led modules are placed between both structures, providing ambient light.


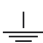
Technical Information

Physical	Type	Suspension
	Environment	Indoors
	Material	Steel structure
	Cable length	500 cm
	Finishes	<ul style="list-style-type: none"> ● Graphite Matt ● Golden Matt ● Copper
	Canopy colour	Same as finish
	Weight	Net 22,4 kg Gross 37,9 kg
Electrical	Voltage	230V
	Supply	Terminal strip
	Light source	2x Module LED 9W 2700K 1440Lm - Included
	Dimming	1-10v driver - Included

Blueprint



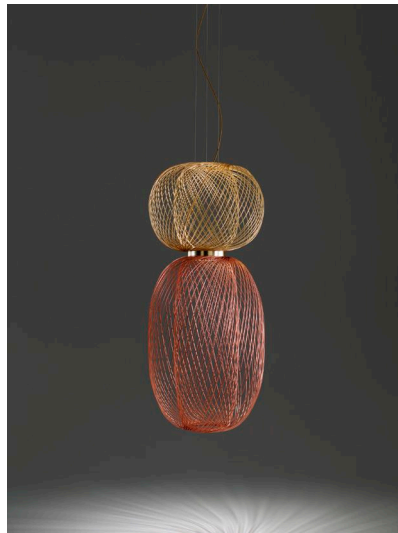
Certifications

CE   IP-20

Codes

TOP / BOTTOM GRAPHITE MATT	105000640006
TOP / BOTTOM GOLDEN MATT	105000640007
TOP / BOTTOM COPPER MATT	105000640008
TOP GRAPHITE / BOTTOM GOLDEN	105000640954
TOP GRAPHITE / BOTTOM COPPER	105000640955
TOP GOLDEN / BOTTOM GRAPHITE	105000640956
TOP GOLDEN / BOTTOM COPPER	105000640957
TOP COPPER / BOTTOM GRAPHITE	105000640958
TOP COPPER / BOTTOM GOLDEN	105000640959

Live photo



Collection



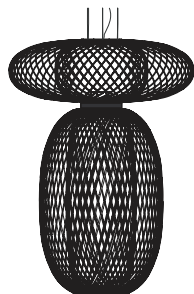
ANWAR T 30
Suspension lamp



ANWAR T 45
Suspension lamp



ANWAR T 90
Suspension lamp



ANWAR T COMBI 30/90
Suspension lamp



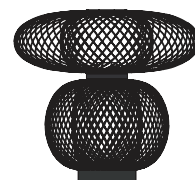
ANWAR T COMBI 45/30
Suspension lamp



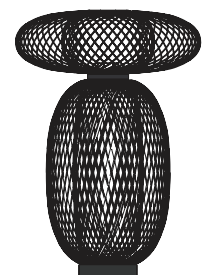
ANWAR P 45
Floor lamp



ANWAR P 90
Floor lamp



ANWAR P COMBI 30/45
Floor lamp



ANWAR P COMBI 30/90
Floor lamp