

# SLIM

Design by Jordi Vilardell.

**VIBIA**  
LIGHT IS CREATION

## Reference

**0914.**

## Application

Hanging lamps

## Description

Hanging lamp in seven units giving a soft light ideal for high ceilings. Designed by Jordi Vilardell. With patterned glass diffuser and finished in white lacquered fibre or black carbon fibre. LED light source.

## Diffuser

Pressed-glass diffuser

## Finish

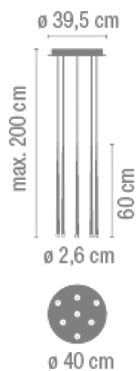


**0914-03.**  
White lacquer  
fiber



**0914-04.**  
Black carbon  
fiber

## Sketch

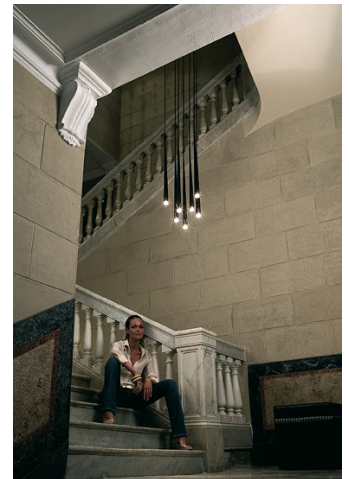


## Electrical characteristics

7 x LED 3W 700mA



Total 21 W



## Physical characteristics

1 Box / 0.27 x 0.76 x 0.76 m. / Vol. 0.1560 m<sup>3</sup> /  
Gross weight 10.2 kg. / Net weight 6.8 kg.

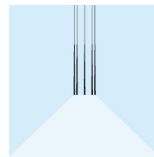
## Installation and assembly

Follow instructions of the installation guide

## Light distribution

### General lighting - opaque shade

Lamp for general lighting with an opaque shade and distributing light upwards and/or downwards mainly.



## Photometric data

Efficiency : 100.00%

Coordinate system : C-G

Total flux : 434.53 lm

Maximum value : 750.57 cd/klm

Light position : C=0.00 G=0.00

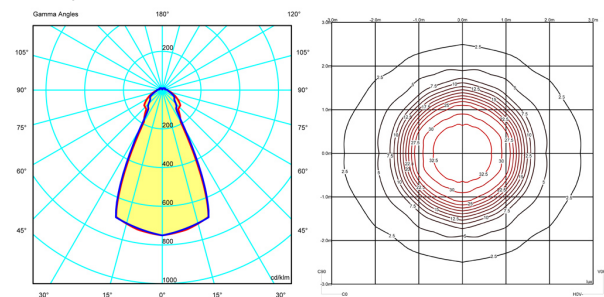
Double symmetrical : 3

Isolux : Isolux (Suelo)

Light position :

X=0.00m Y=0.00m Z=3.00m

Light rotation :



## Certificates

