

PUCK

Design by Jordi Vilardell.

VIBIA
LIGHT IS CREATION

Reference

5436.

Application

Ceiling Lamps

Installation type

Surface

Description

Three-sphere multiple panel light designed by Jordi Vilardell. The use of top-quality opal triplex glass and injection-moulded aluminium gives the product a perfect finish. It gives a warm light without shadows or glare. Low-consumption version.

Diffuser

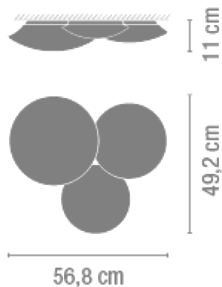
Mat opal triplex blown-glass diffuser

Finish



5436-03.
White

Sketch

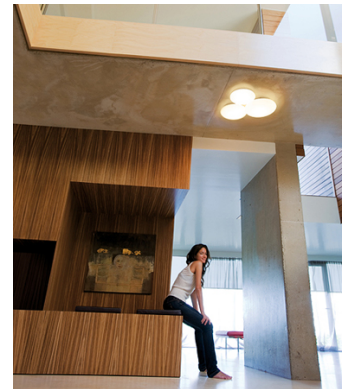
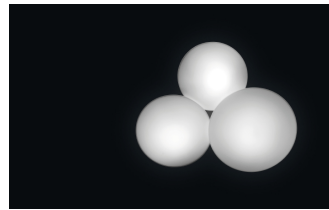


Electrical characteristics

5 x COMPACT FLUORESCENT GX53 230V 9W



Total 45 W



Physical characteristics

1 Box / 0.27 x 0.76 x 0.76 m. / Vol. 0.1715 m³ /
Gross weight 6.9 kg. / Net weight 4.1 kg.

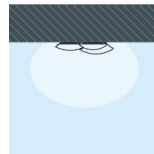
Installation and assembly

Follow instructions of the installation guide

Light distribution

General lighting

Lamp for general lighting that equally distributes the light in all directions.



Photometric data

Efficiency : 61.04%

Coordinate system : C-G

Total flux : 1400.00 lm

Maximum value : 166.64 cd/klm

Light position : C=0.00 G=0.00

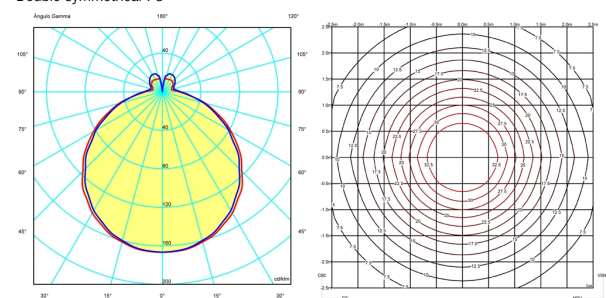
Double symmetrical : 3

Isolux : Isolux (suelo)

Light position :

X=0.00m Y=0.00m Z=3.00m

Light rotation :



Certificates

