

# ALPHA

Design by Ramos & Bassols.

**VIBIA**  
LIGHT IS CREATION

## Reference

**7940.**

## Application

Wall Lamps

## Installation type

Surface

## Description

Wall light designed by Ramos & Bassols with basic lines but great features. It has a chrome structure with black or white lacquer. Its methacrylate diffuser gives a warm, very cosy light. Alpha follows the reader's movements as it rotates and can be angled, opening up to 75° and turning through 360°, which also enables it to provide indirect lighting.

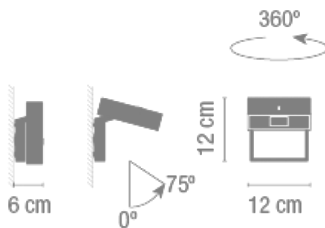
## Diffuser

Polycarbonate diffuser

## Finish

  
**7940-04.**  
Matt black  
lacquer  
**7940-03.**  
Matt white  
lacquer

## Sketch

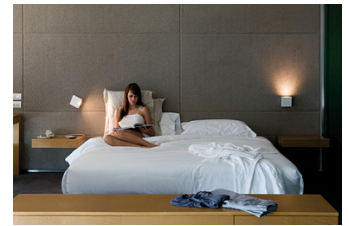


## Electrical characteristics

1 x LED 3W 700mA



Total 3 W



## Physical characteristics

1 Box / 0.13 x 0.20 x 0.21 m. / Vol. 0.0055 m<sup>3</sup> /  
Gross weight 1.2 kg. / Net weight 1.0 kg.

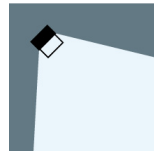
## Installation and assembly

Follow instructions of the installation guide

## Light distribution

### Reading

Lamp having a light beam whose main function is to supply sufficient light for reading.



## Photometric data

Efficiency : 100.00%

Coordinate system : C-G

Total flux : 31.40 lm

Maximum value : 803.31 cd/klm

Light position : C=0.00 G=0.00

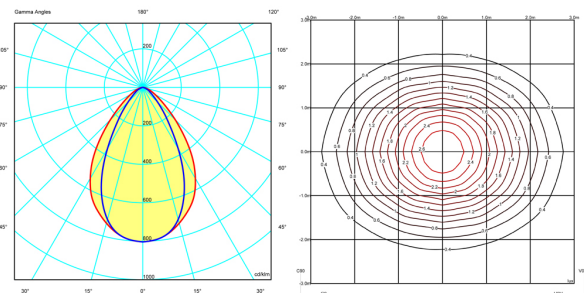
Double symmetrical : 3

Isolux : Isolux (suelo)

Light position :

X=0.00m Y=0.00m Z=3.00m

Light rotation :



## Certificates

