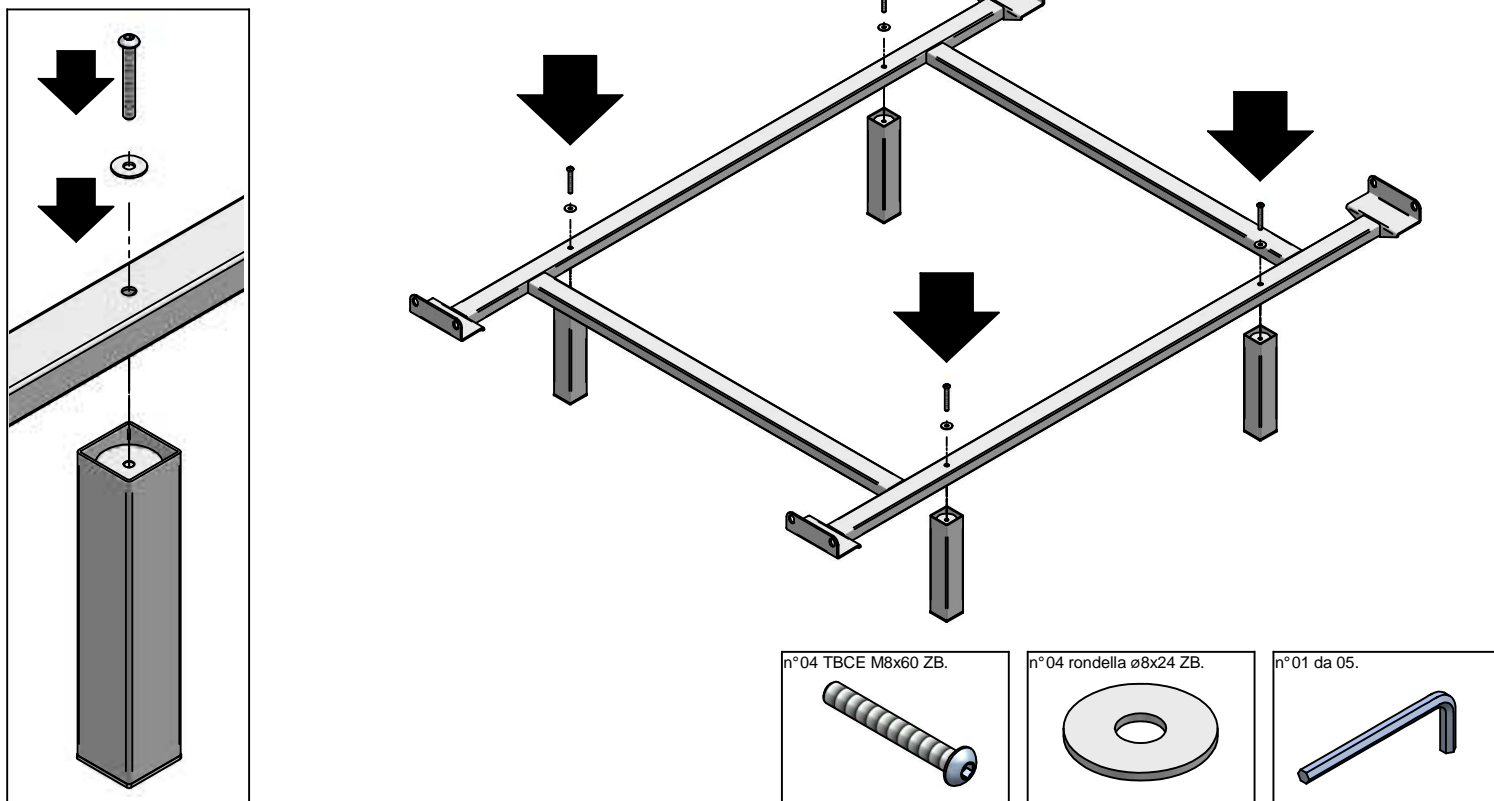
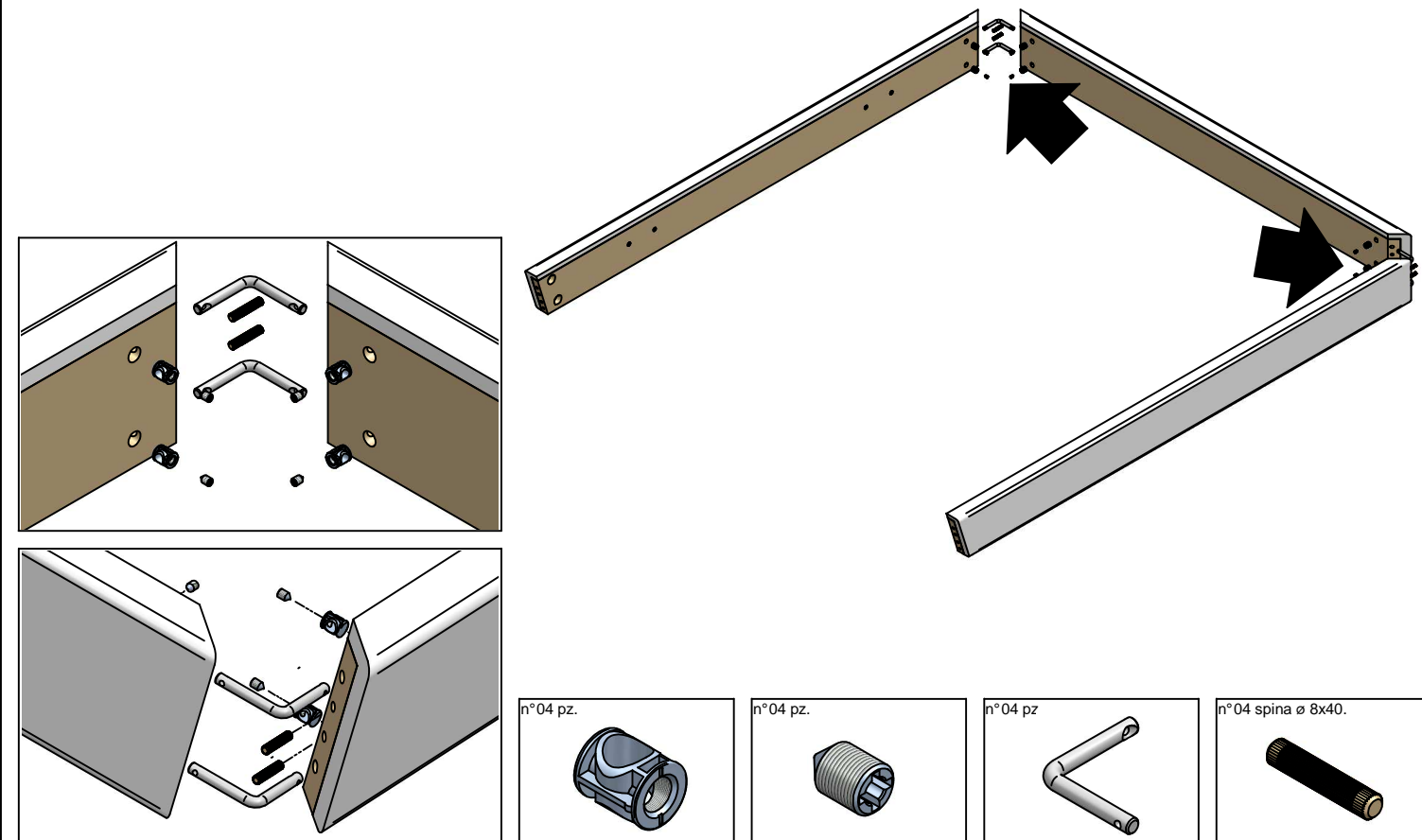


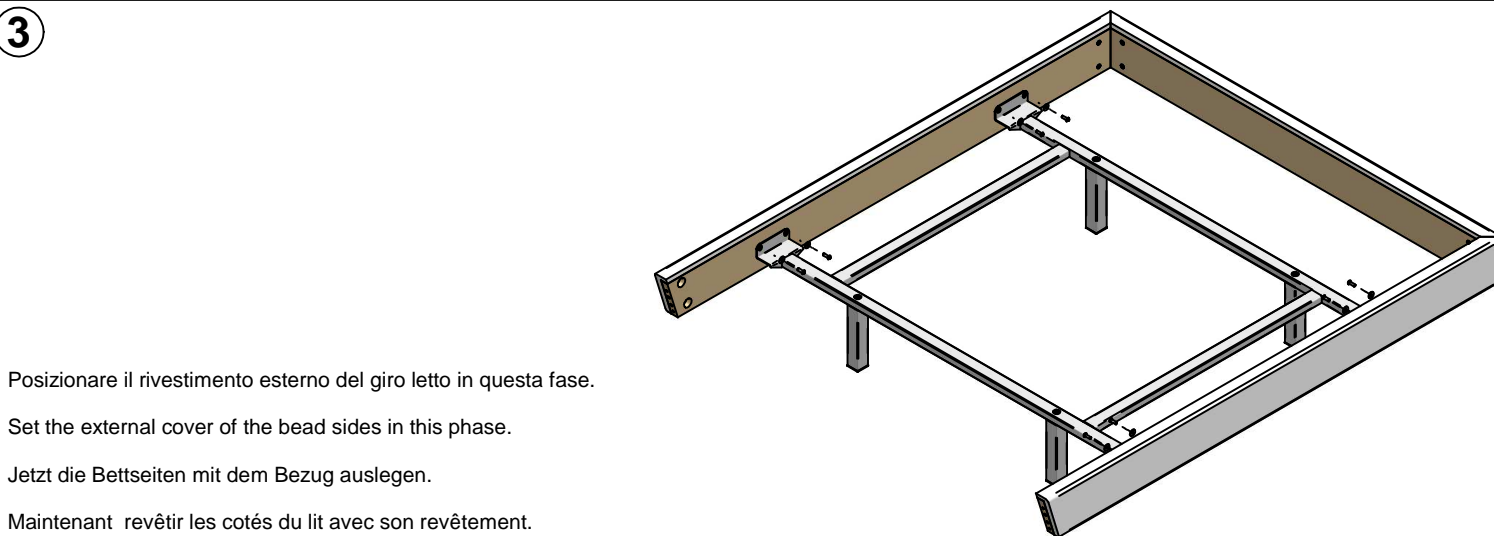
1



2



3

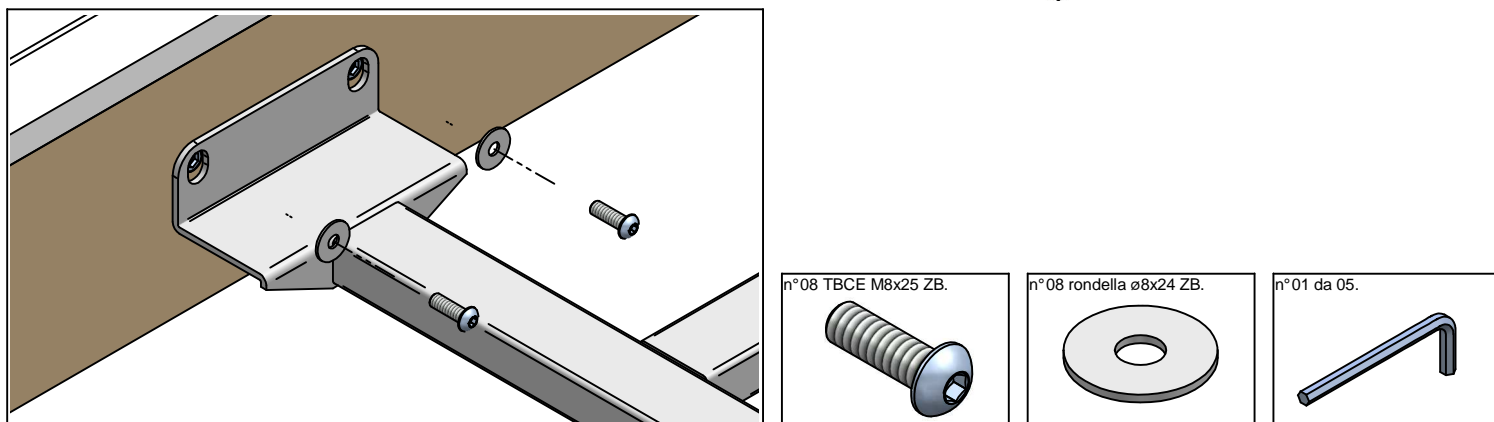


Posizionare il rivestimento esterno del giro letto in questa fase.

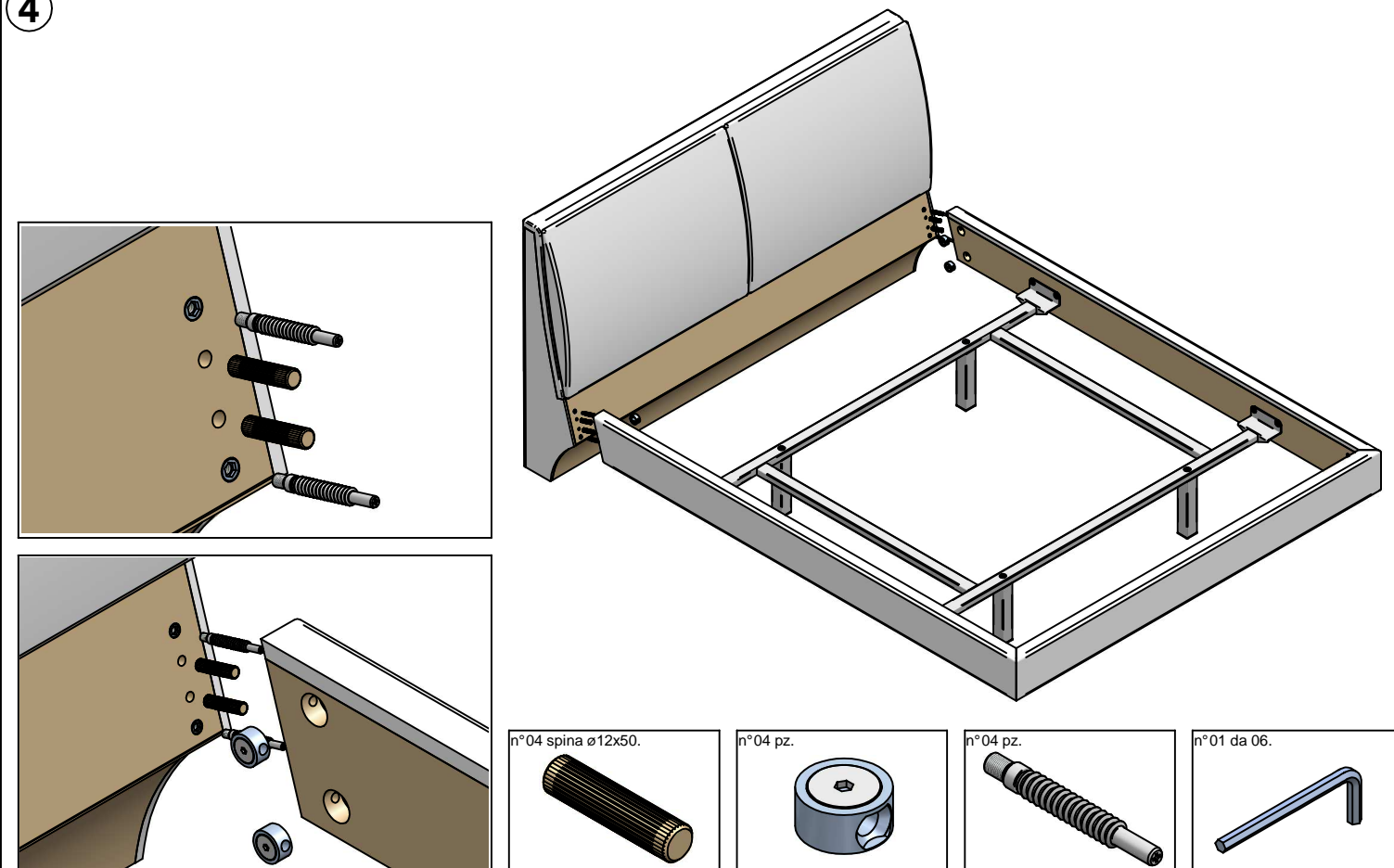
Set the external cover of the bead sides in this phase.

Jetzt die Bettseiten mit dem Bezug auslegen.

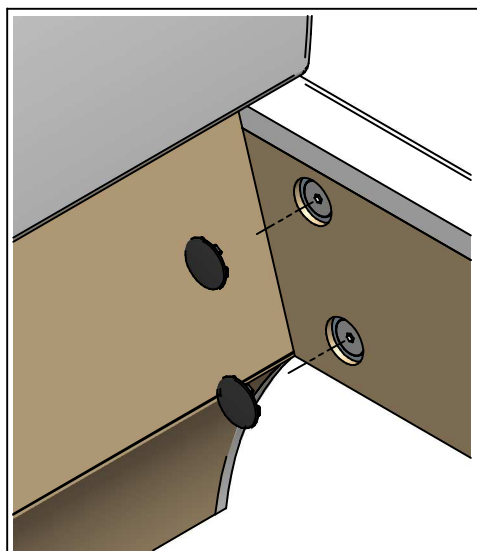
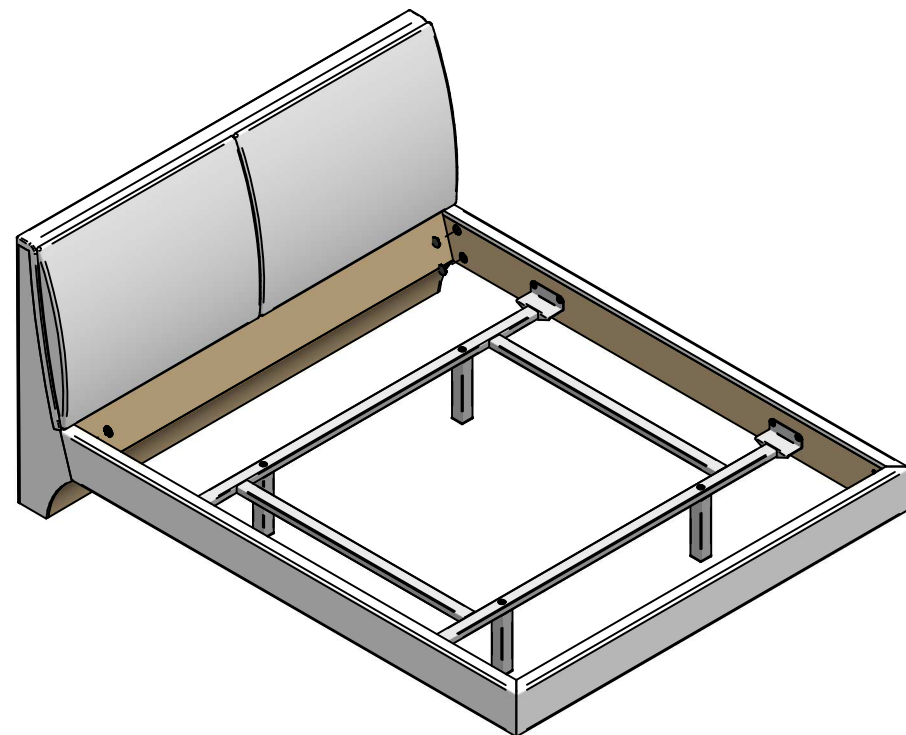
Maintenant revêtir les cotés du lit avec son revêtement.



4



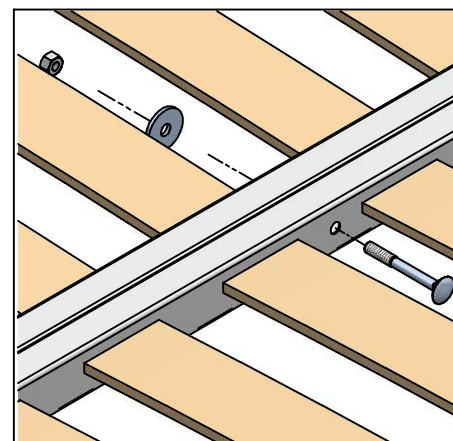
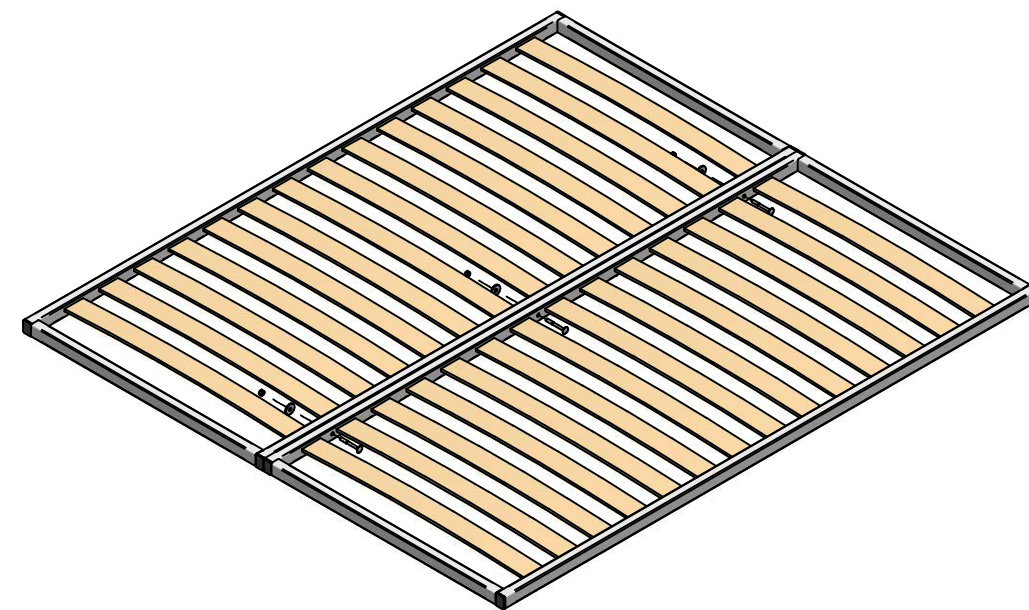
5



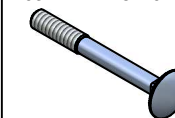
n°04 pz.



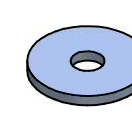
6



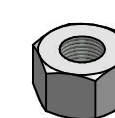
n°03 TTDE M8x70 ZB.



n°06 rondella ø8x32 ZB.



n°03 M8 medio ZB.



n°01 da 13.



7

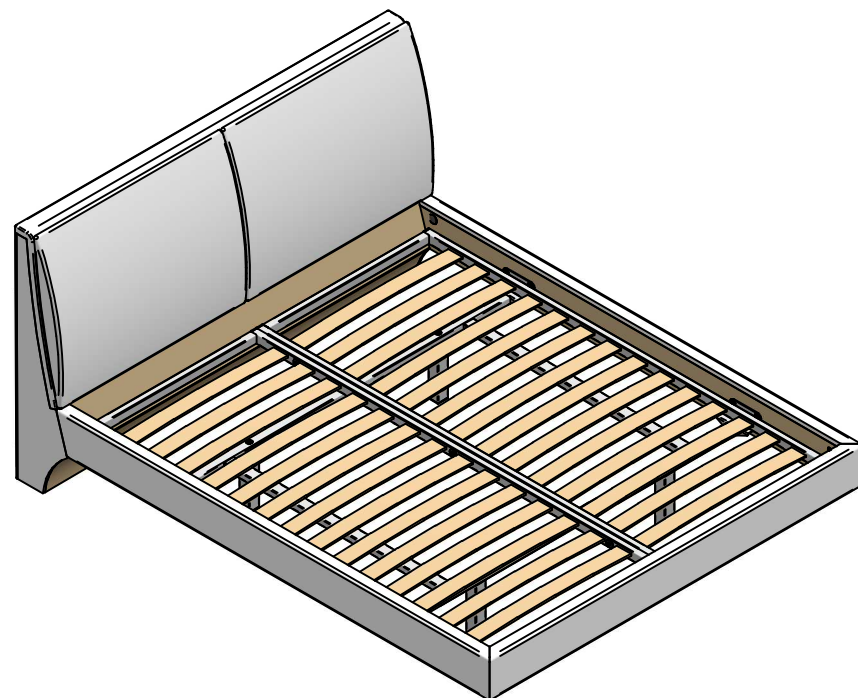
Inserire la rete all'interno del giro letto.

Put the slats inside the metal frame of the bed.

Lattenrost auf den Trägern legen.

Insérer le sommier à l'intérieur du périmètre du lit.

Introducir el somier en el interior de la estructura.



8



## LUKAS

## FRANKLYN

