



# Montera S

Chair with wooden frame. Sead in stained wood or in hide, leather, ecoleather, fabric or custom's fabric.



## Finishing and Materials

### Structure



Lacquered Ash natural oak finish

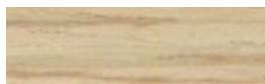


White Lacquered Ash



Black Lacquered Ash

### Coating



Lacquered Ash natural oak finish



White Lacquered Ash



Black Lacquered Ash



Hide  
20 colors



Vintage Leather  
4 colors



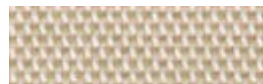
Fiore Leather  
18 colors



Vintage Ecoleather  
11 colors



Secret Ecoleather  
22 colors



Pix Fabric  
9 colors



Mirage Fabric  
17 colors



Long Life Fabric  
13 colors



Hot Fabric  
14 colors



Fenix Wool Fabric  
15 colors

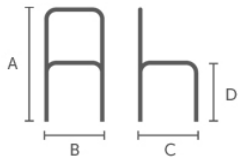


Bubble Fabric  
14 colors



Velvet Superb  
18 colors

## Dimensions



Dimension	cm	inch
A	70	27.6
B	55	21.7
C	51	20.1
D	46	18.1

## Materials Certifications

### Vintage Leather

UNI EN ISO 105 B02 ?3; ISO 5402>50000 cicli; ISO 3377-1?20; UNI EN ISO 11640 Secco - Dry 50 c ?4  
Umido - Wet 20 c ? 3; Sudore - Sweat 20 c ? 3

### Fiore Leather

BS 5852 parte 1; ISO 5402>50000 cicli; ISO 105B02 ? 5; ISO 3377-1 ?20 N; ISO 11644 ? 2.5 N/Cm; EN  
1021/1-2; EN ISO 17233 -20°; IMO RES A 6528(16)

### Vintage Ecoleather

Ecoleather phtalatic free - R.E.A.C.H. 1907/2006/EU Breathable ecoleather Composition: 90% PVC, 7%  
Polyurethane, 3% Cotton Shrinking about 1%

### Secret Ecoleather

Martindale: 150.000 cycles Composition: 31% Cotton, 48% Polyurethane, 21% Polyester Shrinking about:  
1% Fire retardant ecoleather: Classe 1IM, BS 5852 Part. 1, Cigaret Test, Match Test

### Mirage Fabric

Mantindale: 100.000 cycles Composition: 100% Polyester Shrinking about 1% Fire retardant fabric:  
classe 1IM, B1 DIN 4102, M1, B1 OENORM Part.1, BS 5852 Crib 5, EN 1021, USA Calif. Bull 117, IMO  
688 (17) - IMO 563 (14) - IMO 653 (16)

### Long Life Fabric

Martindale 40.000 cycles Composition: 74% Polyester, 18% Cotton, 8% Acrylic Shrinking about 1%

### Hot Fabric

Martindale: 45.000 cycles Composition: 100% Pes Fire retardant fabric: BS5852:2006 (p. 11 CRIB 5),  
EN1021-1, EN1021-2, UNI 9175:2010 - classe 1 im

### Fenix Wool Fabric

Martindale: 100.000 cycles Composition: 70% Wool, 25% Polyamid, 5% Fibers Shrinking about: 1% Fire  
retardant fabric: BS 5852 part. 1, Cigaret test, Match test

### Bubble Fabric

Martindale: 35.000 cycles Composition: 100% Pes Fire retardant fabric: BS5852:2006 (p. 11 CRIB 5),  
EN1021-1, EN1021-2, UNI 9175:2010 - classe 1 im