



sabi

design Setsu & Shinobu Ito

Caratteristiche Tecniche

Struttura: in metallo battuto opaco bronzo.
Piano: in legno MDF, impiallacciato rovere termotrattato oppure in marmo opaco bianco Carrara, moro Emperador o nero Marquina.

Technical Features

Structure: in matt bronze wrought metal.
Top: in MDF veneered with heat-treated oak or in matt white Carrara, dark brown Emperador or black Marquina marble.

Caractéristiques Techniques

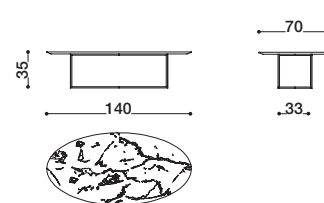
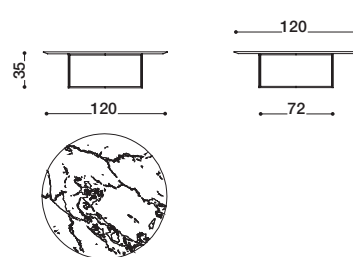
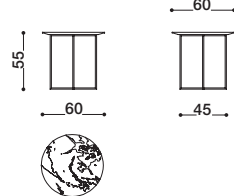
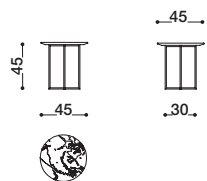
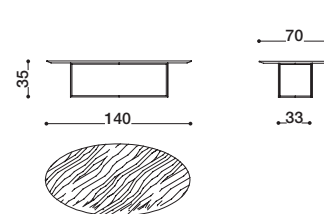
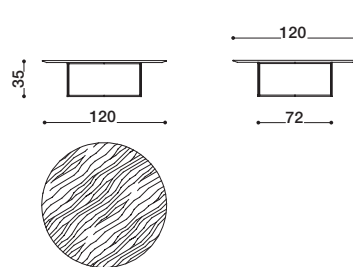
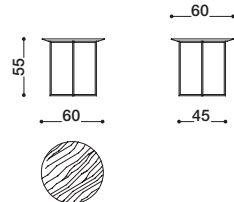
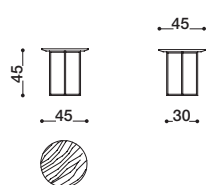
Structure: en métal forgé bronze mat.
Plateau: en MDF plaqué chêne thermo-traité ou bien en marbre mat, blanc Carrara, marron foncé Emperador ou noir Marquina.

Technische Eigenschaften

Struktur: aus geschmiedetem Metall Farbe Bronze matt.
Tischplatte: aus MDF-Holz, furniert mit thermisch behandelter Eiche oder aus mattem Marmor, Weiß Carrara, Dunkelbraun Emperador oder Schwarz Marquina.

Características Técnicas

Estructura: de metal batido bronce mate.
Sobre: de madera MDF, chapada en roble termotratado o en mármol mate, blanco Carrara, marrón Emperador o negro Marquina.

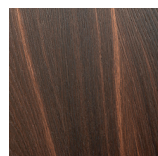


STRUTTURA STRUCTURE STRUCTURE STRUKTUR ESTRUCTURA



bronzo opaco
mat bronze
bronce mat
Bronze Matt
bronce mate

PIANO TOP PLATEAU TISCHPLATTE SOBRE



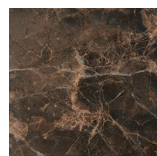
rovere termotrattato
heat-treated oak
chêne thermo-traité
thermisch behandelter Eiche
roble termotratado



bianco Carrara
white Carrara
blanc Carrara
Weiß Carrara
blanco Carrara



nero Marquina
black Marquina
noir Marquina
Schwarz Marquina
negro Marquina



moro Emperador
dark brown Emperador
marron foncé Emperador
Dunkelbraun Emperador
marrón Emperador