

BIG BUG

PAOLA NAVONE (2009)



DESCRIPTION

Big Bug, the extralarge version of Bug armchair design by Paola Navone. A landscape of comfort in which the seat and arm create highly original geometries.

Poliform

BIG BUG

PAOLA NAVONE (2009)



TECHNICAL DESCRIPTION

TPOLOGY

armchair

STRUCTURE

wood and by-products

PADDING SEAT/BACKREST

multi-density polyurethane foam

PRE-COVER

polyester padding

BASE

feet in plastic

COVER

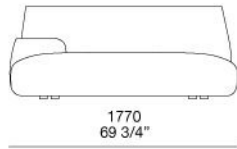
removable in fabric, not removable in leather

Poliform

BIG BUG

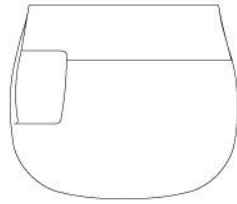
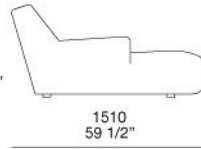
PAOLA NAVONE (2009)

BUPL177S
BUPL177D



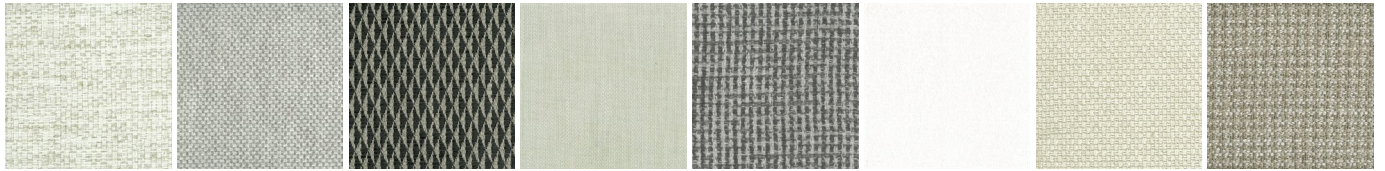
730
28 3/4"

390
15 1/4"



BIG BUG

FINISHINGS\ARMCHAIR\FABRIC (35)



CHIOS

ARGO

CORINTO

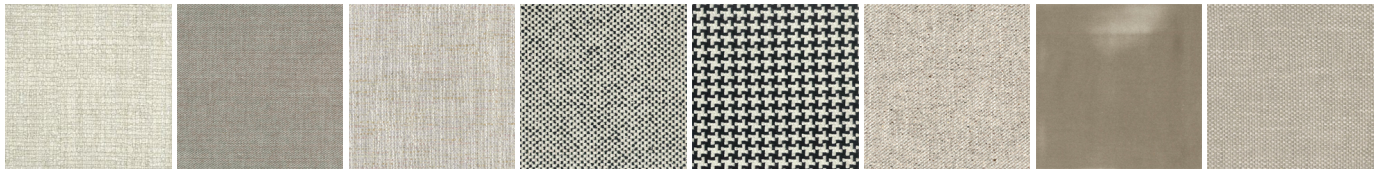
ITACA

MILOS

OLIMPIA

PAROS

ZANTE



SPARTA

SALFORD

ORLEANS

DERBY

LIMOGES

OXFORD

PERSIA

RABAT



MERIDA

HANNOVER

CORDOBA

CALEDONIA

NORWAY

ASPEN

ATLANTA

BERLINO



KYOTO

LIMA

MELBOURNE

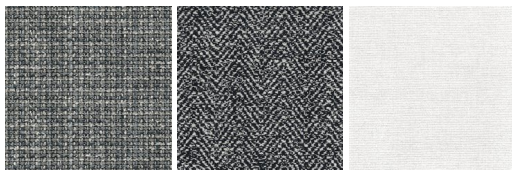
PORTO

REIMS

SAVANA

SIVIGLIA

INDRA - NEW



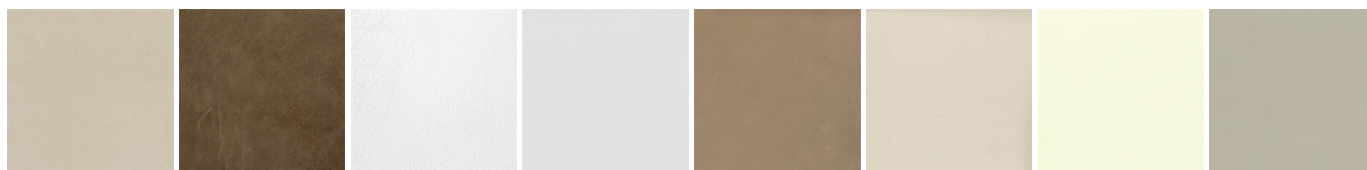
LIPSI - NEW

SKYROS -
NEW

NAXOS - NEW

BIG BUG

FINISHINGS\ARMCHAIR\LEATHER (8)



NABUK
LEATHER

VINTAGE
LEATHER

SUPER
LEATHER

PELLE
SPECIAL

AGED-
LOOKING
LEATHER

COLORS
LEATHER

SPRING
LEATHER

SOFT
LEATHER