

SOLITARIO PL

TECHNICAL SHEET

UBICAZIONE : interni / LOCATION : indoor

CODICE IP / IP CODE : IP20

TIPOLOGIA / TYPOLOGY :

Lampada a sospensione / Suspended lamp

FINITURE e MATERIALI / FINISHES and MATERIALS :

Struttura bronzo spazzolato o nickel nero o bianco opaco /
Light satin bronze or black nickel or matt white body

Diffusore in vetro soffiato metallizzato fumè chiaro o
parzialmente sabbiato (effetto flood o effetto spot) /
Blown glass, light smoke finish or half frosted (flood or spot
effects)

LIGHT SOURCE

FONTE inclusa / SOURCE included :

1 x GU10 LED

POTENZA / POWER : 8 W dimmable

TEMPERATURA DI COLORE / COLOUR TEMPERATURE :

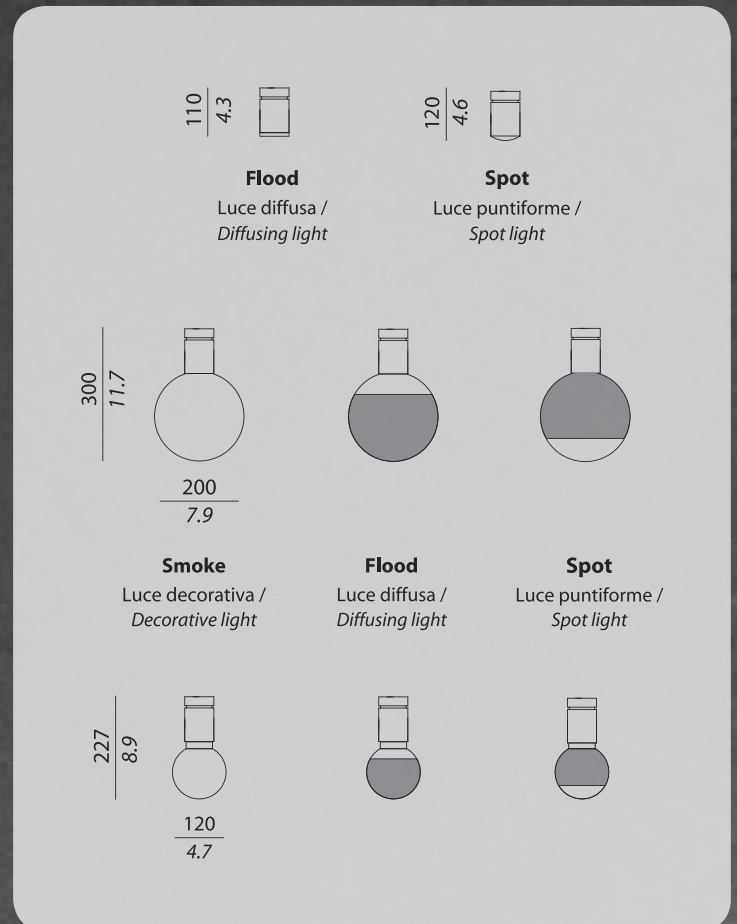
3000 K

CRI : 90

EMISSIONE / EMISSION : 600 Lm

ALIMENTAZIONE / TENSION : 220 V

TECHNICAL DRAWINGS



CON TARDI® SOLITARIO PL

Questo dispositivo è compatibile con lampade di classi energetiche:

A vertical energy efficiency scale is shown, ranging from A+++ (top, green) to E (bottom, red). A blue bracket on the right side of the scale indicates that the device is compatible with classes A+++ through A+. The classes B, C, D, and E are crossed out with a red 'X'.

LED

Questa lampada è venduta con una lampadina di classe energetica: **A+**

874/2012

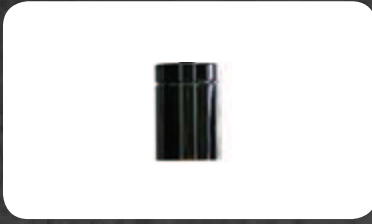


CERTIFICATION



SOLITARIO PL COMPONENTS

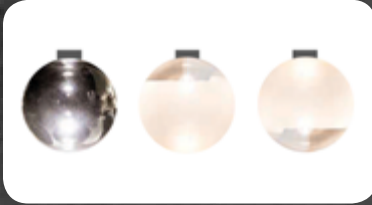
LAMP



Box 1:

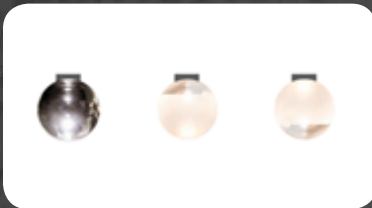
WIDTH : 16 cm / 6.4 inc
DEPTH : 16 cm / 6.4 inc
HIGHT : 11 cm / 4.3 inc
WEIGHT : 1 kg

SPHERES



Box 1 Spheres 200:

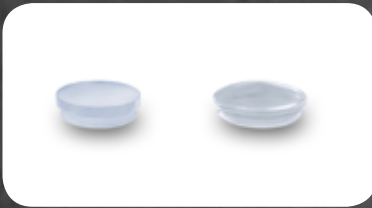
WIDTH : 27 cm / 10.7 inc
DEPTH : 27 cm / 10.7 inc
HIGHT : 29 cm / 11.4 inc
WEIGHT : 1 kg



Box 1 Spheres 120:

WIDTH : 19 cm / 7.4 inc
DEPTH : 19 cm / 7.4 inc
HIGHT : 19 cm / 7.4 inc
WEIGHT : 1 kg

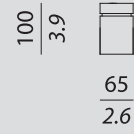
KIT LENS



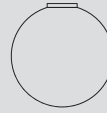
Box 1:

WIDTH : 17 cm / 6.8 inc
DEPTH : 17 cm / 6.8 inc
HIGHT : 20 cm / 7.9 inc
WEIGHT : 1 kg

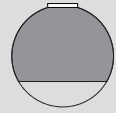
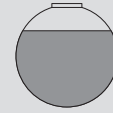
TECHNICAL DRAWINGS



Sfere / Spheres



$\frac{200}{7.9}$



$\frac{120}{4.7}$



Lenti / Lens

Flood
 Luce diffusa /
 Diffusing light



$\frac{65}{2.6}$

Spot
 Luce puntiforme /
 Spot light



$\frac{65}{2.6}$