

VISION

design Sacha LAKIC

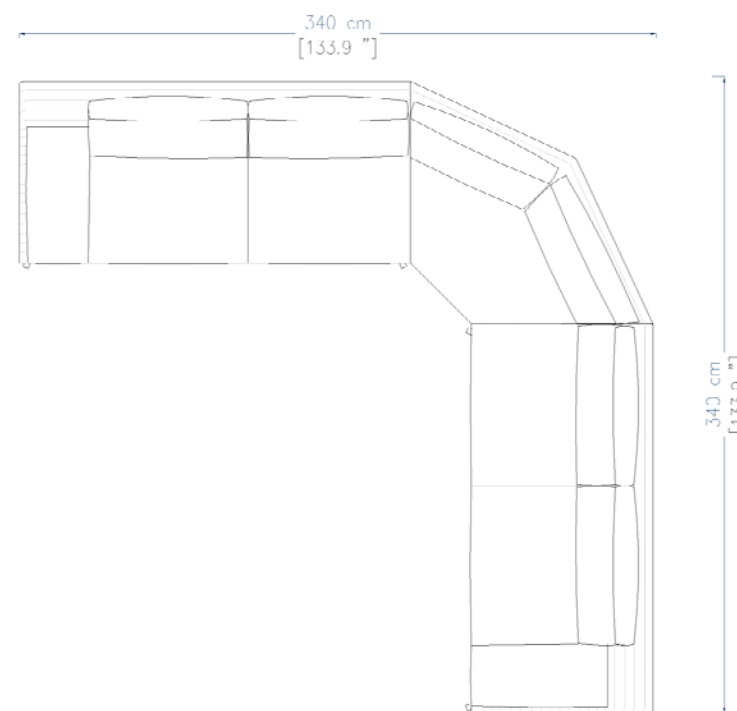
rochebobois
PARIS



VISION

rochebobois
PARIS

design Sacha LAKIC



COMPOSITION D'ANGLE PANORAMIQUE (L.340/340 x H.80 x P.97 cm)

GRAND BATARD 3 PLACES ACC. GAUCHE L.240 cm

ANGLE PANORAMIQUE L.130 cm

GRAND BATARD 3 PLACES ACC. DROIT L.240 cm

PANORAMIC CORNER COMPOSITION (133,8"/133,8"W x 31,5"H x145,7"D)

LARGE 3-SEAT 1-ARM UNIT LEFT ARMREST 94,5"

PANORAMIC CORNER RIGHT 51,2"

LARGE 3-SEAT 1-ARM UNIT RIGHT ARMREST 94,5"

COMPOSICION DE ANGULO PANORAMICO (L.340/340 x H.80 x P.97 cm)

GRAN BATARD 3 PL L.240 cm APY IZQUIERDO

ANGULO PANORAMICO L.130 cm

GRAN BATARD 3 PL L.240 cm APY DERECHO

VISION

rochebobois
PARIS

design Sacha LAKIC



INFORMATIONS TECHNIQUES / TECHNICAL SPECIFICATIONS / CARACTERISTICAS TECNICAS

Structure : 100% Métal
Suspension : Mailles
Garnissage dossier : Couette de plumes et fibres
Garnissage assise : Mousse tri- densité 40-35-30 kg/m³ et fibres polyester 100 et 200 g/m² + vellutino
Garnissage accoudoir : Mousse densité 30 kg/m³ et fibres polyester 100 et 200 g/m² + vellutino
Piétements : Métal finition Chrome noir

Structure: 100% Metal
Suspension: Welded mesh
Back cushions: Feathers and fibres duvet
Seat cushion: Tri-density foam 40-35-30 kg/m³ and polyester fibre 100 and 200 g/m² + vellutino
Armrest cushion: Foam 30 kg/m³ and polyester fibre 100 and 200 g/m² + vellutino
Base: Metal, black chrome-plated finish

Estructura: 100% Metal
Suspensión: Mallas
Relleno respaldo: Plumas y fibras
Relleno asiento: Espuma de densidad 40-35-30 kg/m³ y fibras de poliéster 100 y 200 g/m² +vellutino
Cojines del brazo: Espuma de densidad 30 kg/m³ y fibras de poliéster 100 y 200 g/m² +vellutino
Patas: Metal acabado cromado negro

OBSERVATIONS / OBSERVATIONS / OBSERVACIONES:

- Fabrication Européenne
- Le matelassage du velours Cabaret est réalisable uniquement sur la structure des éléments
- Le velours Cabaret matelassé est disponible en 8 coloris : 54 (Bleu nuit), 58 (Pétrole), 2003 (Souris), 1404 (Plomb), 1402 (Sapin), 23 (Mastic), 1405 (Grenat) et 2007 (Aubergine) – voir page suivante
- Modèle réalisable dans tous les revêtements de la collection ROCHE BOBOIS (sans matelassage)
- Les éléments d'Angle (Angle panoramique L130 et Angle carré L.97) sont nécessairement associés, de part et d'autre, à d'autres éléments dans une composition.

- Manufactured in Europe
- The Cabaret "matelassé" (padded) velvet is only available on the elements structure
- The Cabaret "matelassé" (padded) velvet is available in 8 colors : : 54 (Bleu nuit), 58 (Pétrole), 2003 (Souris), 1404 (Plomb), 1402 (Sapin), 23 (Mastic), 1405 (Grenat) et 2007 (Aubergine) - see next page
- Model available in all exclusive materials from the ROCHE BOBOIS collection (without padding).
- The corner elements (Panoramic corner L130 cm and Square corner L.97 cm) have to be combined, on both sides, with other elements in a composition.

- Fabricación europea
- El acolchado de terciopelo Cabaret solo es posible en la estructura de los elementos
- El terciopelo Cabaret acolchado está disponible en 8 colores : : 54 (Bleu nuit), 58 (Pétrole), 2003 (Souris), 1404 (Plomb), 1402 (Sapin), 23 (Mastic), 1405 (Grenat) et 2007 (Aubergine) - ver página siguiente
- Modelo disponible en todos los revestimientos de la colección ROCHE BOBOIS (sin acolchar)
- Los elementos de ángulo (ángulo panorámico L130 y ángulo cuadrado L.97) están necesariamente asociados, en ambos lados, a otros elementos en una composición.

OPTIONS / OPTIONS / OPCIONES:

- Passepoil disponible dans plusieurs coloris – voir page 5
- Piping available in several colors - see page 5
- Ribete disponible en varios colores - ver página 5

design Sacha LAKIC

VELOURS CABARET MATELASSE (REALISABLE UNIQUEMENT SUR LA STRUCTURE DES ELEMENTS) : COLORIS DISPONIBLES
CABARET « MATELASSE » (PADDED) VELVET (ONLY AVAILABLE ON THE ELEMENTS STRUCTURE): AVAILABLE COLOURS
VELOURS CABARET MATELASSE (REALIZABLE ÚNICAMENTE EN LA ESTRUCTURA DE LOS ELEMENTOS): COLORES DISPONIBLES



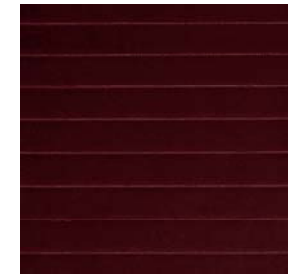
54 Bleu Nuit



1402 Sapin



2007 Aubergine



1405 Grenat



58 Pétrole



1404 Plomb



2003 Souris



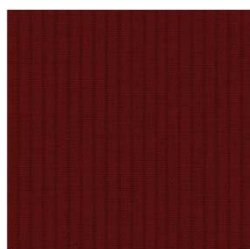
23 Mastic

VISION

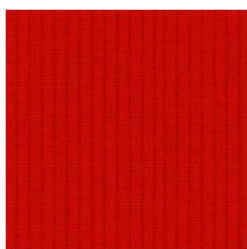
design Sacha LAKIC

PASSEPOIL : COLORIS DISPONIBLES / PIPING: AVAILABLE COLOURS / RIBETE: COLORES DISPONIBLES

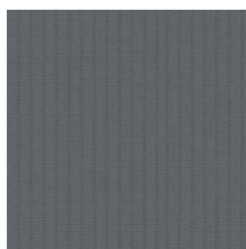
PASSEPOIL MODELE APPROCHE / APPROCHE MODEL PIPING / RIBETE MODELO APPROCHE



88 Amaranto



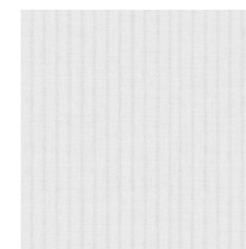
85 Rubino



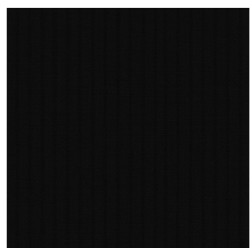
46 Ferro



135 Nuvola



40 Blanc



41 Nero



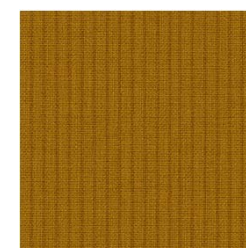
168 Castoro



139 Pavone



125 Oliva

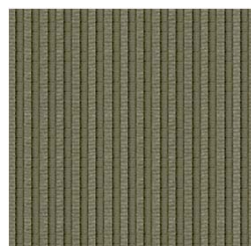


63 Senape

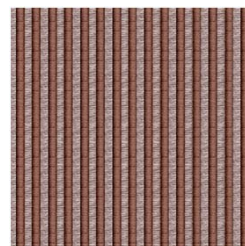
PASSEPOIL MODELE SONGES / SONGES MODEL PIPING / RIBETE MODELO SONGES



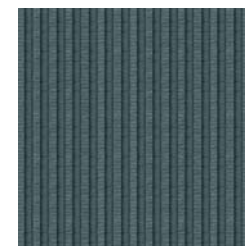
136 Sabbia



50 Sahara



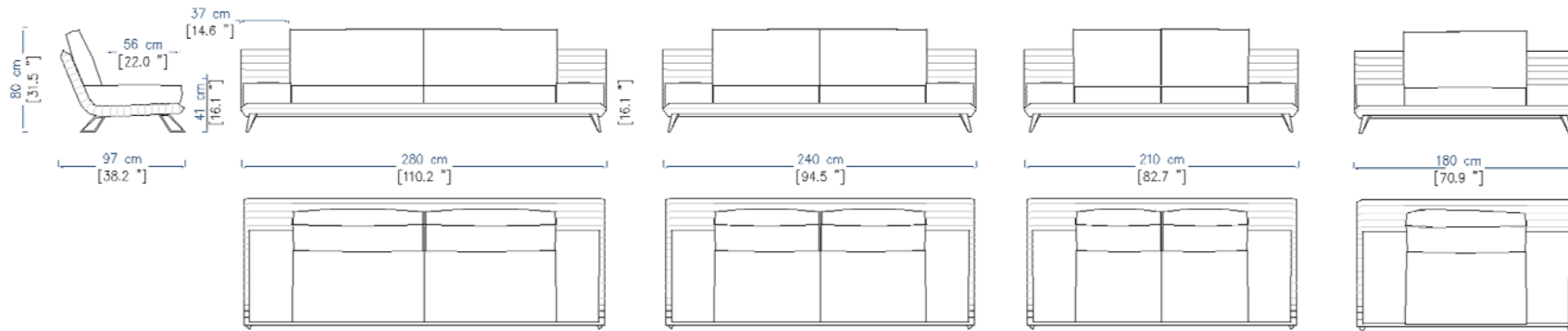
163 Pepe



49 Asfalto

VISION

design Sacha LAKIC

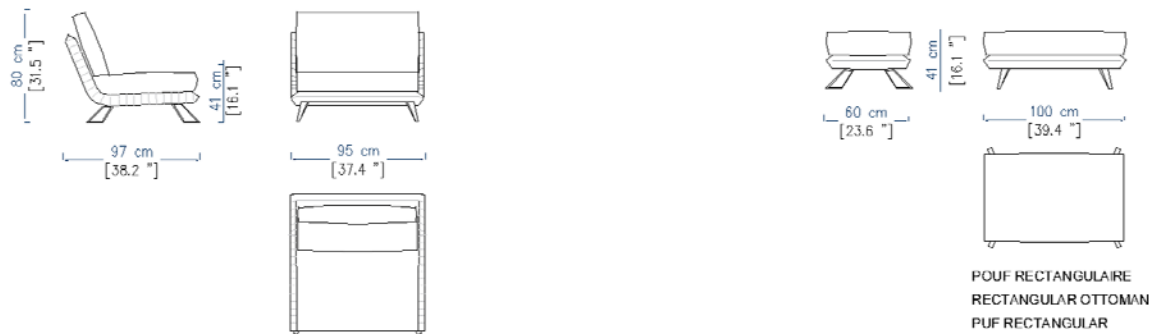


GRAND CANAPE 4 PLACES
LARGE 4-SEAT SOFA
GRAN SOFA 4 PLAZAS

GRAND CANAPE 3 PLACES
LARGE 3-SEAT SOFA
GRAN SOFA 3 PLAZAS

CANAPE 3 PLACES
3-SEAT SOFA
SOFA 3 PLAZAS

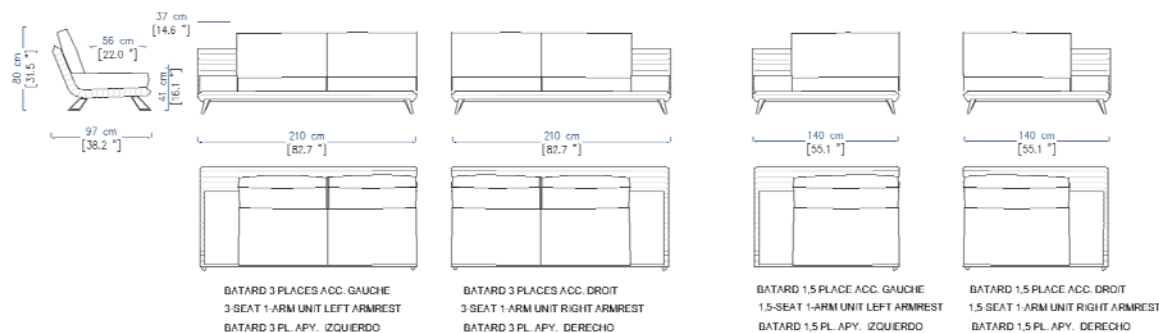
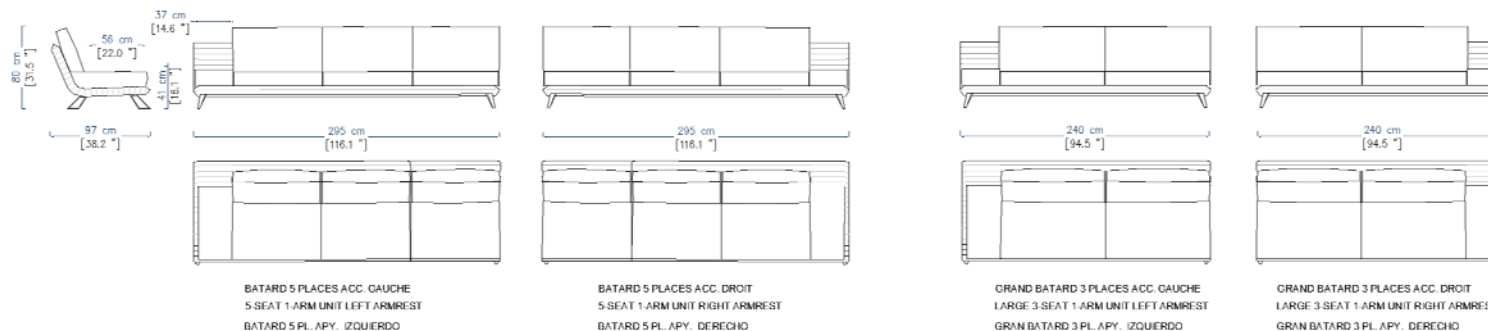
CANAPE 2 PLACES
2-SEAT SOFA
SOFA 2 PLAZAS



CHAUFFEUSE INDEPENDANTE
INDEPENDENT ARMLESS CHAIR
CHAUFFEUSE INDIPENDIENTE

POUF RECTANGULAIRE
RECTANGULAR OTTOMAN
PUF RECTANGULAR

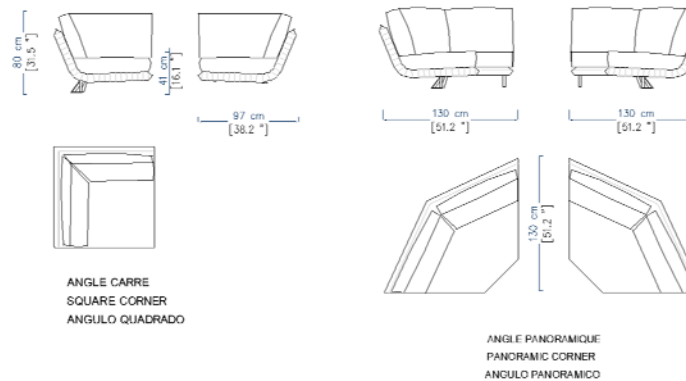
design Sacha LAKIC



LES ÉLÉMENTS D'ANGLE (ANGLE PANORAMIQUE L130 ET ANGLE CARRÉ L97) SONT NECESSAIREMENT ASSOCIÉS, DE PART ET D'AUTRE, À D'AUTRES ÉLÉMENTS DANS UNE COMPOSITION

THE CORNER ELEMENTS (PANORAMIC CORNER L130CM AND SQUARE CORNER L97CM) HAVE TO BE COMBINED, ON BOTH SIDES, WITH OTHER ELEMENTS IN A COMPOSITION

LOS ELEMENTOS DE ÁNGULO (ÁNGULO PANORÁMICO L130 Y ÁNGULO CUADRADO L97) ESTÁN NECESARIAMENTE ASOCIADOS, EN AMBOS LADOS, A OTROS ELEMENTOS EN UNA COMPOSICIÓN



ANGLE CARRE
SQUARE CORNER
ÁNGULO CUADRADO

ANGLE PANORAMIQUE
PANORAMIC CORNER
ÁNGULO PANORÁMICO