

## Tools Studio Cerri & Associati 2002



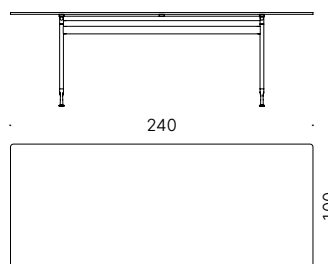
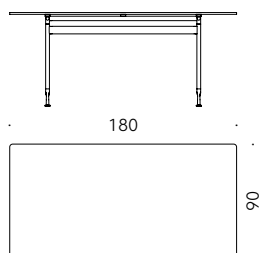
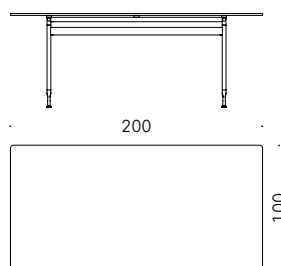
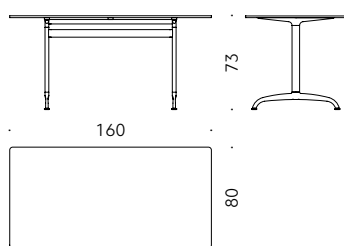
### Tavoli rettangolari

**Materiali:**

BASE: fusione a gravità di alluminio e traversi in alluminio estruso, verniciati a polvere color bianco opaco. Piedini regolabili in alluminio.

PIANO LAMINATO: multistrato di betulla rivestito con laminato HPL color bianco, bordo in PVC bianco semitrasparente.

+info:  
<http://www.depadova.com/materials.pdf>



## Tools Studio Cerri & Associati 2002



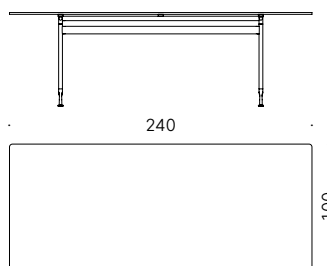
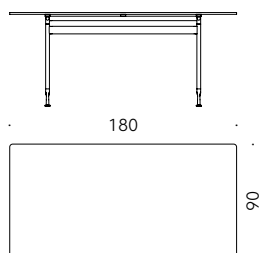
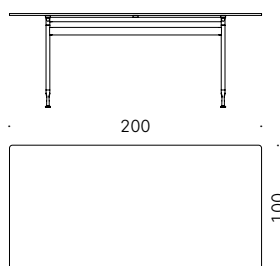
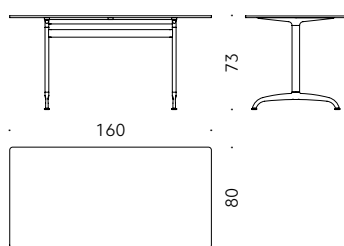
### Rectangular tables

**Materials:**

BASE: in gravity cast aluminium and cross-bars in extruded aluminium, matt white or matt black powder coated. Aluminium adjustable feet.

LAMINATE TOP: birch plywood covered in white HPL laminate. Edge in PVC, semitransparent white.

+info:  
<http://www.depadova.com/materials.pdf>



## Tools Studio Cerri & Associati 2002



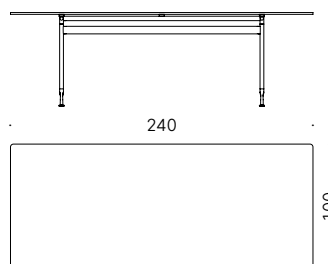
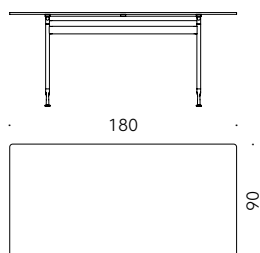
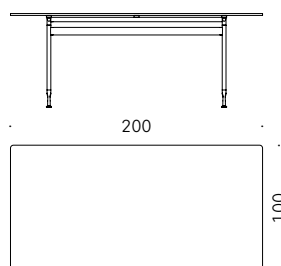
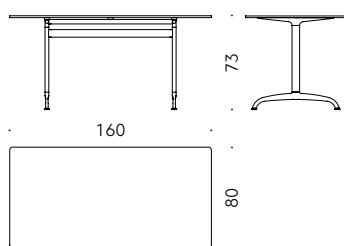
### Tables rectangulaires

**Matériaux:**

BASE: fusion à gravité d'aluminium et traverses en aluminium extrudé, peintes à poudre couleur blanc mat. Pieds réglables en aluminium.

DESSUS STRATIFIE : multiplis de bouleau revêtu avec stratifié HPL blanc, bord en PVC blanc semi-transparent

+info:  
<http://www.depadova.com/materials.pdf>



## Tools Studio Cerri & Associati 2002



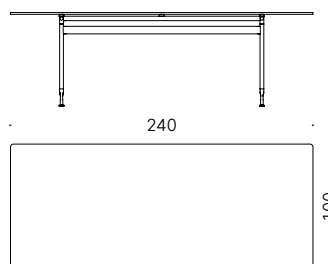
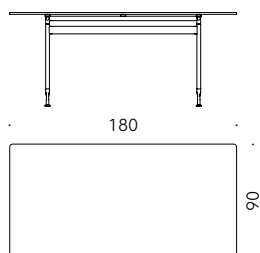
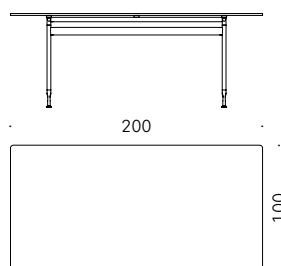
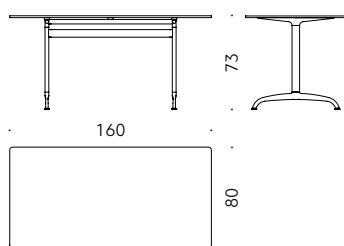
### Rechteckige Tische

#### Materialien:

GESTELL: Druckgussaluminium; Querbalken aus Aluminium eloxiert, mit Pulverlackierung, matt weiß. Verstellbare Aluminiumfüße.

TISCHPLATTE LAMINAT: Birkenchichtholz, verkleidet mit weißem Laminat HPL und weißen, halbtransparenten PVC-Kanten.

+info:  
<http://www.depadova.com/materials.pdf>



## Tools Studio Cerri & Associati 2002



### Mesas rectangulares

**Materiales:**

BASE: fusión de aluminio por gravedad y travesaños de aluminio extruído, pintados en polvo color blanco mate. Pies ajustables de aluminio.

TABLERO LAMINADO: multicapa de abedul revestido en laminado HPL color blanco, borde de PVC blanco semitransparente.

+info:  
<http://www.depadova.com/materials.pdf>

