

# VE 940

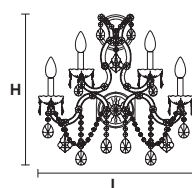
## Applique

Design by: m\_p studio

# MASIERO

### VE940/A5


CE




**L** 35 cm / 13.77"

**SP** 35 cm / 13.77"

**H** 50 cm / 19.68"

 **VE 940/A5 MT - CG**  
5x E14x40 W max (not included)  
Triac Dimmable

 **VE 940/A5 RW/DW**  
5x LED source -20 W tot  
(driver included).  
Control system: DMX or Masiero  
Smart Light App

### MT/CG



**MT**  
**Traditional version**

**CG**  
**Coloured glass version**

<b>LIGHTING</b>	Traditional E14 lightbulbs	
<b>FRAME</b>	<b>MT</b>	Chrome or gold plated metal covered with transparent glass
	<b>CG</b>	Painted metal covered with painted glass
<b>LAMPSHADES</b>	<b>MT</b>	No lampshades included
	<b>CG</b>	No lampshades included
<b>PENDANTS</b>	<b>MT</b>	Transparent glass or crystal
	<b>CG</b>	Coloured glass

### RW/DW

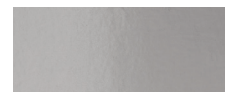


**RW**  
**RGB-W Led version**

**DW**  
**Dynamic White Led version**

<b>LIGHTING</b>	LED sources CRY>85	
	<b>RGB-W</b>	each light 330 lm at 3000k
	<b>DW</b>	each light 490 lm at 4700 K
<b>FRAME</b>	Chrome or gold plated metal covered with transparent glass	
<b>LAMPSHADES</b>	No lampshades included	
<b>PENDANTS</b>	Transparent glass or crystal	

### MT TRADITIONAL



**G04** Shiny chrome



**G03** Shiny gold

### MT DYNAMIC WHITE



### MT RGB - W - LED



### MT COLOURED GLASS

