

# HILL

MAURO LIPPARINI



Young, modern and fashionable. **Hill** is perfect for the living room and ideal for the bedroom. For those who love a avant-garde style. This versatile, fun side table is with the lay-out of the legs and table tops – available in round or rectangular versions – making it possible to combine multiple tables. There's also plenty of scope for customisation thanks to the myriad finishes and woods available.

TYPE / SMALL TABLES

**MisuraEmme®**

## TECHNICAL DESCRIPTION

**Small and bedside tables** available in four versions: round and square and in two different heights.

**Base** in solid wood in oak, matt lacquered, glossy lacquered.

**Top in:**

- wood th.19mm (6/8" in) in veneer, matt lacquered, glossy lacquered
- marble th.20mm (6/8" in)
- smooth or printed leathers with wood undertop.



## DESIGNER

MAURO LIPPARINI

**Mauro Lipparini** earned a degree in Architecture in 1980 from Università degli Studi of Florence, where he also worked as a professor. He won the international design contests Young & Designer Milan (1987) and International Du Pont Award Köln (Germany, 1988 and 1989). Lipparini's intense activity in the field of industrial design covers office and home furniture, the textile industry and other products created for many companies in Europe and Japan. In architecture and interior design, Lipparini has concentrated mainly on private and public housing, on showrooms, retail sales outlets and exposition installations.

Furthermore, Lipparini also designs and realizes advanced corporate identity image systems that range from graphics to editorial services to production. Lipparini's style is based on the essential shapes and the clear and decisive lines that are characteristic of natural minimalism. His creations are imbued with a joyful spirit and with an elating sense of aesthetic pleasure and creativity. Thanks to his free use of color, organic weave patterns and original visual ideas, Lipparini amplifies the palette of minimalism, conveying the spontaneity and power of this aesthetic style and projecting it towards a new era of great maturity and wellbeing.



# TOP FINISHINGS

## MATT LACQUERED COLOURS



## HIGH GLOSS LACQUERED COLORS





L98 Oliva

L8S Giallo

L9B Senape

L94 Marsala

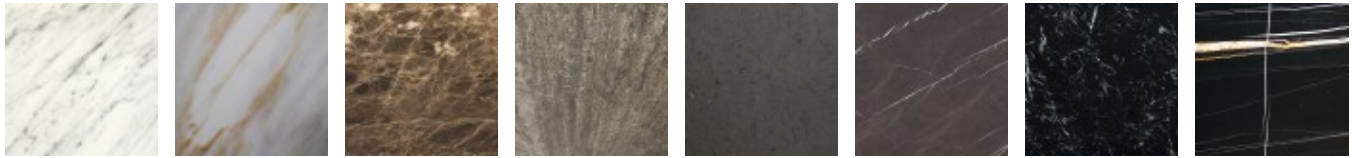
L81 Fuoco

L95 Ruggine

L9H Petrolio

L9E Deep Blu

MARBLES



BC Bianco Carrara Matt

CA Calacatta Oro Matt

EM Emperador Matt

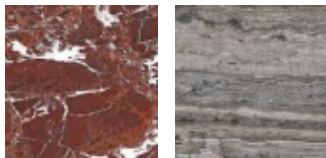
TV Travertino Matt

BA Basaltite Matt

GT Grey Stone Glossy

MR Marquinia Glossy

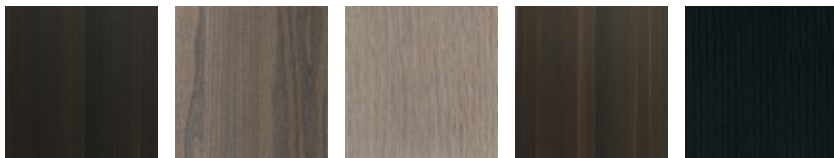
SR Sahara Noir Glossy



RL Rosso Lepanto

OR Orobico

MATT VENEERS



66 Tabacco

53 Olmo grey

50 Rovere cenere

52 Rovere fumé

51 Oak Black

SMOOTH LEATHERS



H30 Gesso

H38 Sand

H36 Camoscio

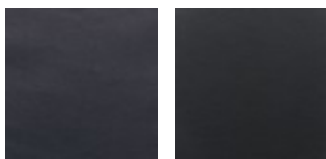
H32 Acacia

H31 Naturale

H37 Marmotta

H71 Testa di Moro

H35 Grigio Chiaro



H40 Blu Notte

H73 Nero

# BASE FINISHINGS

## MATT LACQUERED COLOURS



## HIGH GLOSS LACQUERED COLORS





L98 Oliva



L8S Giallo



L9B Senape



L94 Marsala



L81 Fuoco



L95 Ruggine



L9H Petrolio



L9E Deep  
Blu

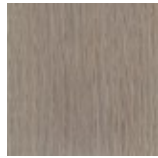
## MATT VENEERS



66 Tabacco



53 Olmo  
grey



50 Rovere  
cenere



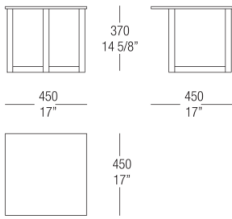
52 Rovere  
fumé



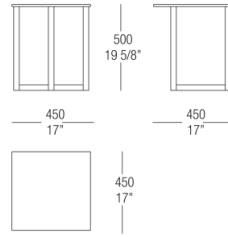
51 Oak Black

# DIMENSIONS

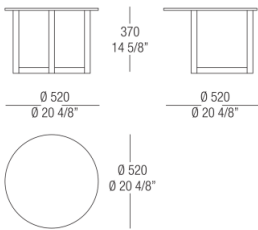
Matt lacquer / glossy lacquer top



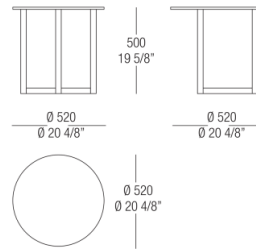
Matt lacquer / glossy lacquer top



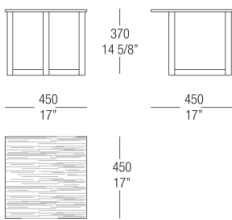
Matt lacquer / glossy lacquer top



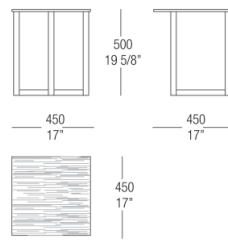
Matt lacquer / glossy lacquer top



Wood top

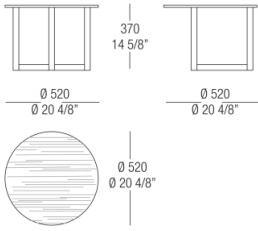


Wood top

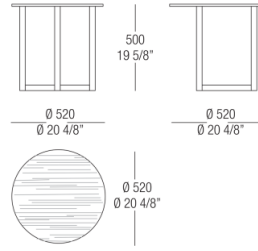




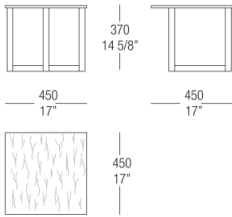
Wood top



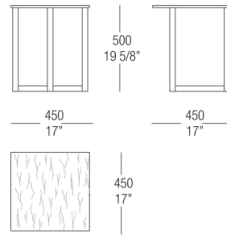
Wood top



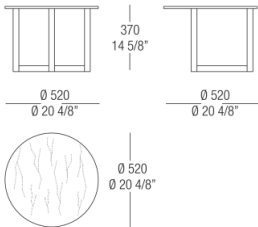
Marble top



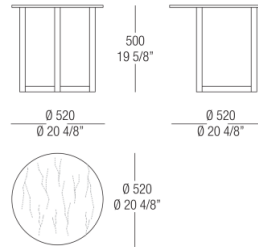
Marble top



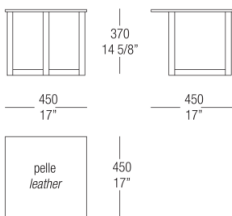
Marble top



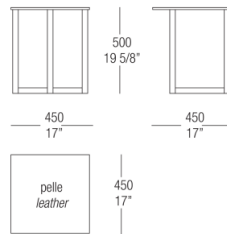
Marble top



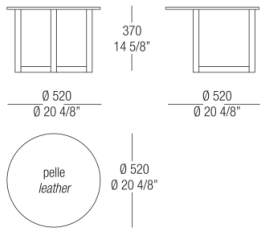
Leather top



Leather top



Leather top



Leather top

