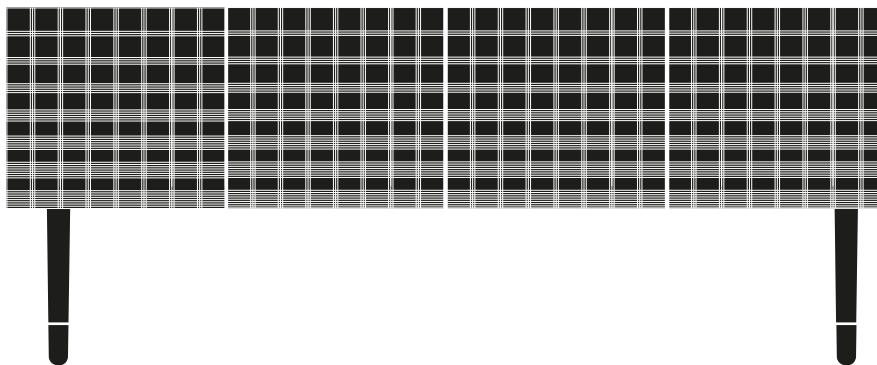


# STOYA

by e-ggs



Stoya sfilava a Milano, Londra, New York indossando una lunga camicetta di seta dalle trame geometriche, che le lascia scoperte le gambe e i piedi. Ha dei tratti orientali che le donano molto, facendola sembrare più saggia della sua giovane età. Intelligente, ma non intellettuale, è la nostra realizzazione più affascinante.

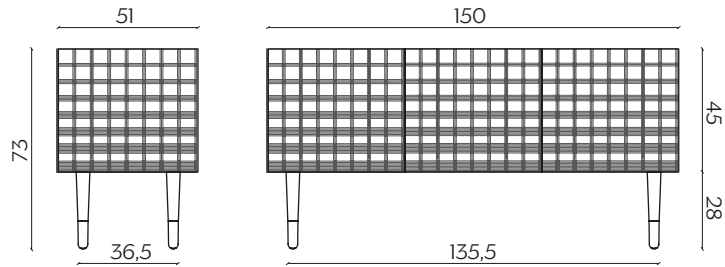
Stoya is on the catwalks in Milan, London and New York, wearing a long silk blouse with a geometrical weave that leaves its legs and feet uncovered. It has some oriental features that suit it perfectly, making it seem wise for its young age. Intelligent, but not intellectual, this is our most enchanting product.

## DIMENSIONI | DIMENSIONS

lunghezza | width: 150 cm

larghezza | depth: 51 cm

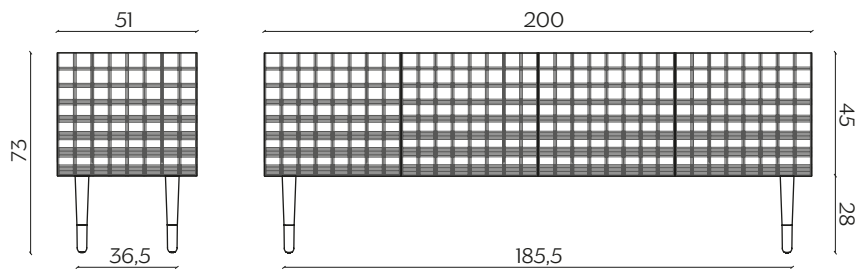
altezza | height: 73 cm



lunghezza | width: 200 cm

larghezza | depth: 51 cm

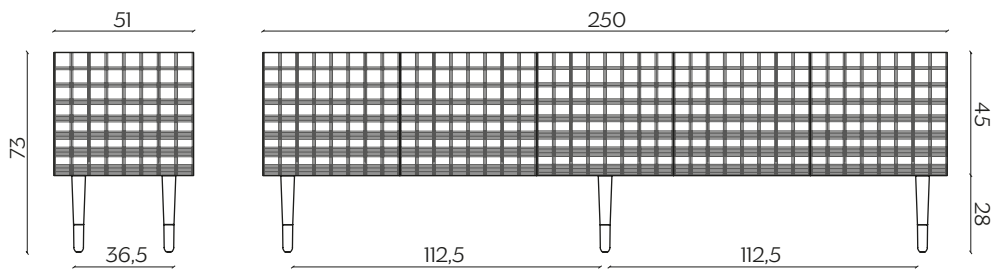
altezza | height: 73 cm



lunghezza | width: 250 cm

larghezza | depth: 51 cm

altezza | height: 73 cm



## AMBIENTE | ENVIRONMENT

interno | indoor

## DOWNLOAD | DOWNLOADS

la guida Cura e Manutenzione è disponibile su [miniforms.com](https://miniforms.com)  
Care and Maintenance guide is available at [miniforms.com](https://miniforms.com)

file 2D, 3D e fotografie sono disponibili su [miniforms.com](https://miniforms.com)  
2D, 3D files and hi-res images are available at [miniforms.com](https://miniforms.com)

## FINITURE | FINISHES

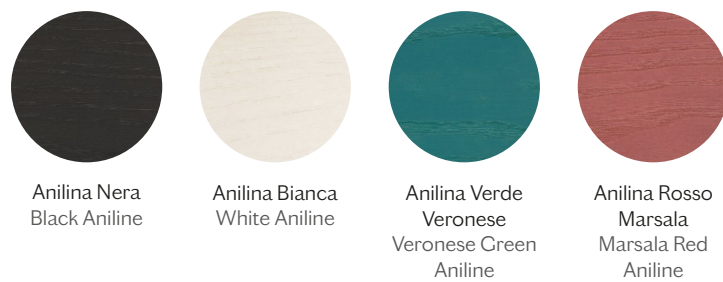
### STRUTTURA | STRUCTURE

#### Laccati | Lacquer

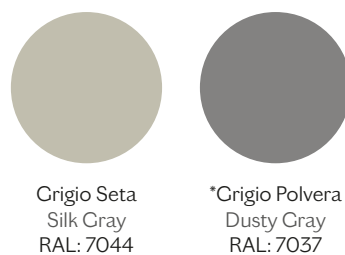


#### GAMBE | LEGS

##### Legno | Wood

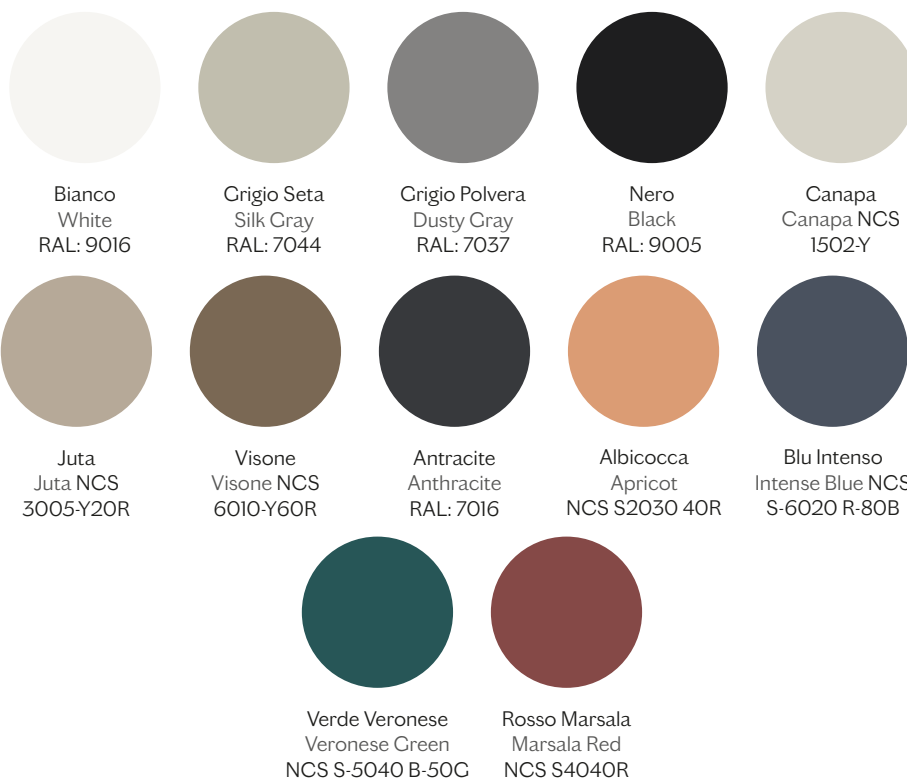


#### TRAMA | PATTERN

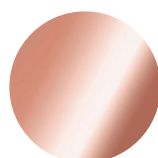


\*solo con struttura in Grigio Seta | only with structure in Silk Gray

**PUNTALI | FEET**  
**Laccati | Lacquer**



**Metallo | Metal**



Rame  
Copper