



DAYDREAM (INDOOR + OUTDOOR)

design Mist-o

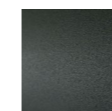
Daybed available for indoor and outdoor with structural weaving, made by Studio UnPizzo and fixed to the frame; the weaving is hypoallergenic, recyclable, eco-friendly and available in the colours in collection.

Indoor version: supporting tubular frame Ø25mm in steel with epoxy polyester powder coating gunmetal grey color. Seat cushion in differentiated density polyurethane foam and backrest cushions in prewashed and sterilized goose down, stitched into separate compartments. Fabric or leather upholstery, both fully removable by zippers.

Outdoor version: supporting tubular frame Ø25mm in Stainless Steel AISI 316 with matt satin finish or with epoxy polyester powder coating gunmetal grey color. Seat cushions in open cell structure polyurethane foam DRYFEEL S and fiber layers for outdoor; backrest cushions with padding for outdoor. Both cushions are covered with a waterproof fabric.

Upholstery with outdoor fabric only, fully removable by zippers. For both versions, seat and backrest cushions joined together by zippers. Floor support secured by black PVC feet.

Structure

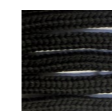


Steel with Gunmetal Grey Coating (In-Outdoor)



Stainless Steel with Matt Satin Finish (Outdoor)

Weaving



Black Tubular (In-Outdoor)

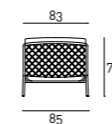


Greige Tubular (In-Outdoor)



Green Tubular (In-Outdoor)

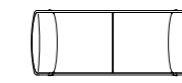
Technical Drawings



75

70

36



85

210