



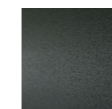
## ERA SETTEE + ERA EASYCHAIR

design David Lopez Quincoces

Easychair and Settee consisting of Ø16mm steel rod legs, tied together through a contoured sheet-steel ring 4mm thick, laser cut in one piece, to which is welded a drawn and calendred steel plate section 30x4mm, which serve as seat chassis. Seat panel in multilayer poplar wood, sprung with coated rubber elastic straps, and padding in polyurethane foam covered with acrylic fibre layers. Backrest consisting of a calendred sheet-steel band 1,5mm thick, padded with polyurethane foam, inserted

to the legs through a mill in the front part, and secured through brass screws, made on specific design. All steel part, aside from the screws in brass with matt lacquer finish, are coated with epoxy powder coating gunmetal grey colour. Upholstery in leather or fabric, as per the list in the notes, always non-removable. Floor support secured by black PVC feet. Seat depth: Easychair 49cm; Settee 59cm.

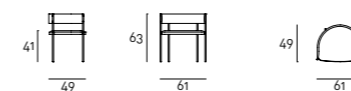
### Legs



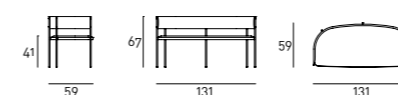
Steel with  
Gunmetal Grey  
Coating

### Technical Drawings

#### Easychair



#### Settee



### Notes

These products can only be upholstered with the following fabrics / leathers:

- |                |                    |                           |                      |
|----------------|--------------------|---------------------------|----------------------|
| - 4 Khali      | - 19a Alabama      | - 34a Leather Florence    | - 42 Leather Natural |
| - 5a Molly     | - 20 Tosca         | - 35 Leather New Scotland | - 43 Leather Touch   |
| - 7a Lampedusa | - 26a Country      | - 36 Leather Caresse      |                      |
| - 14 Mikado    | - 29 Twist         | - 38a Leather Seta        |                      |
| - 19 Anversa   | - 33 Leather Nabuk | - 39 Leather Must         |                      |