



## JELLY TABLE (INDOOR + OUTDOOR)

design Piero Lissoni

Small table in different heights and sizes, available for indoor and outdoor.

**Indoor version:** 4 or 5 legs base in chromed-plated steel, in AISI 316 Stainless Steel with matt satin-finish or in steel with epoxy powder gunmetal grey colour. Top in decorative multi-layer HPL, decorated on both sides, white or black colour; in MDF white or black lacquered; in marble white Carrara, black Marquinia, Sahara Noir or red Levanto or slate stone. The marble version provides a satin finish and an opaque transparent protective varnish or a matt or glossy polyester finish.

**Outdoor version:** 4 or 5 legs base in AISI 316 Stainless Steel with matt satin-finish or in Stainless Steel AISI 316 with epoxy polyester powder coating gunmetal grey colour. Top in decorative multilayer HPL decorated on both sides, white or black colour, or slate stone. For both versions, the marble and slate stone tops only, feature an undertop in black HPL.

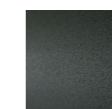
### Base



Steel with Chromed-Plated Finish (Indoor)



Stainless Steel with Matt Satin Finish (In-Outdoor)



Steel with Gunmetal Grey Coating (In-Outdoor)

### Top



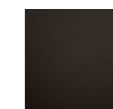
Lacquered Black (Indoor)



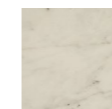
Lacquered White (Indoor)



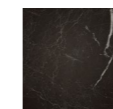
White HPL (In-Outdoor)



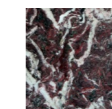
Black HPL (In-Outdoor)



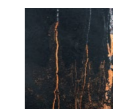
White Carrara Marble (Indoor)



Black Marquinia Marble (Indoor)



Red Levanto Marble (Indoor)



Sahara Noir Marble (Indoor)



Slate (In-Outdoor)

### Notes

For the marble top version please specify the required finish in the order.

Technical Drawings

