

# Molteni & C

## **GRID** — VINCENT VAN DUYSSEN 2018

1—  
16



Grid is a study on the evolution of domestic space expressed by the system's absolute compositional freedom. The project is open, flexible and functional with an innovative modular grid, which organises the compositional elements and enhances individual functions.

**DATASHEET**

REGISTERED  
DESIGN

IX.2021

**moltenigroup.com**

Dimensions in millimeters and inches. The right to discontinue and make changes is reserved. This information is based on the latest product information available at the time of printing.

## FINISHES

finishes	matt lacquer colours	woods	glossy lacquer colours	transparent glass	transparent stopsol glass	pewter colour / copper	Eco Skin	bonded hide leather	bronze mirror
<b>components</b>									
<b>WALL PANELLING</b>									
panel									
<b>SUPPORT SHELF</b>									
shelf									
<b>TRAY</b>									
shelf									
accessory bottom									
<b>CONTAINER UNDER SUPPORT SHELF OR TRAY</b>									
structure / internal partition									
flap door / drawer front									
<b>BOOKCASE</b>									
shelf									
back									
partitions									
<b>WALL UNIT</b>									
tops th 30 mm									
back / central shelf / central partition									
glass door and glass partition	profile								
	glass								
<b>GLASS CABINETS</b>									
back and internal shelves									
glass side / hinged door	profile								
	glass								
base / lid									
<b>SHOWCASE</b>									
structure / support									
mirror									
<b>CHARGING ACCESSORY</b>									
structure									

### colours

#### Matt lacquer

BC chalk white  
PE pearl  
DN dune  
PL platinum  
NE black  
AT anthracite  
SE mustard  
SI silica  
DO dolomite grey  
AL clay  
MK moka  
CZ light blue grey  
SA sand  
RU ruby  
PX pewter colour  
RX copper  
TO dove grey  
PR petroleum blue  
BG burgundy  
LS london sky  
SU stardust  
ML moonlight  
SP spice

#### Glossy lacquer

BC chalk white  
PE pearl  
DN dune  
PL platinum  
NE black  
AT anthracite  
SE mustard  
SI silica  
DO dolomite grey  
AL clay  
MK moka  
CZ light blue grey  
SA sand  
RU ruby  
PX pewter colour  
RX copper  
TO dove grey  
PR petroleum blue  
BG burgundy  
LS london sky  
SU stardust  
ML moonlight  
SP spice

#### Woods

EU eucalyptus  
NO walnut  
RF graphite oak

#### Eco Skin

grey  
mink  
ivory  
dark brown

# Molteni & C

2—  
16

### DATASHEET

REGISTERED  
DESIGN

IX.2021

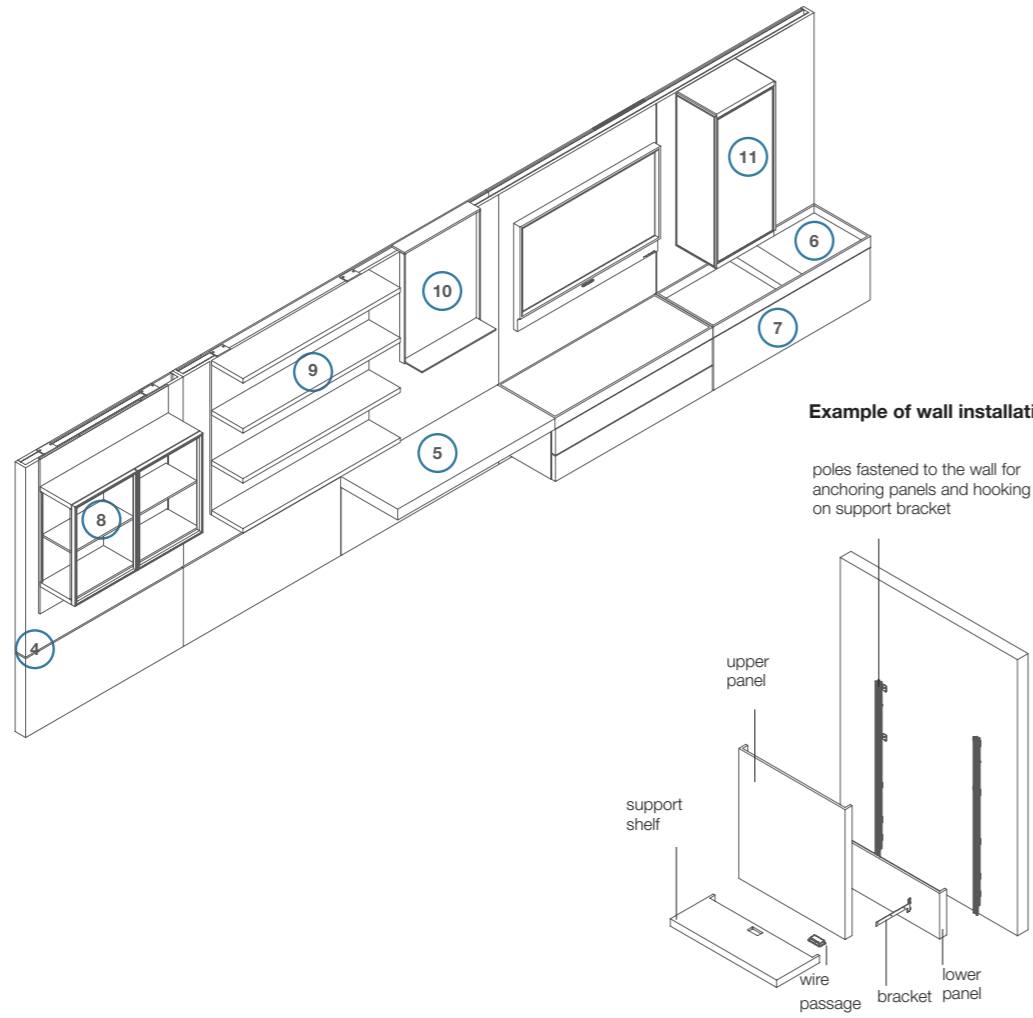
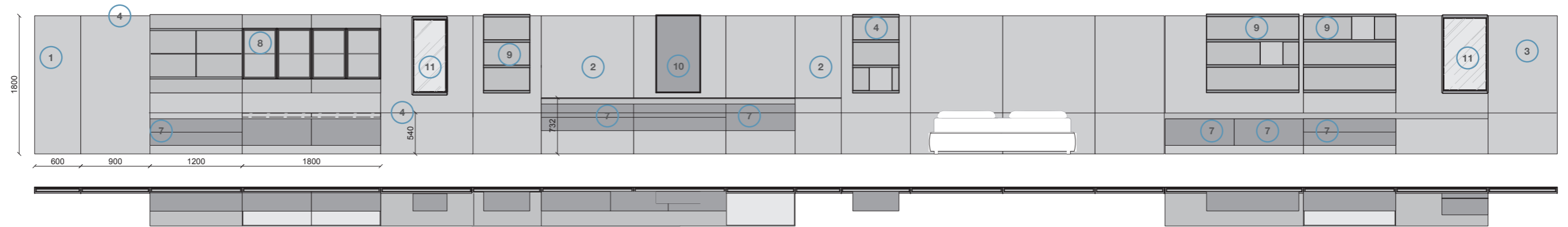
[moltenigroup.com](http://moltenigroup.com)

Dimensions in millimeters and inches. The right to discontinue and make changes is reserved. This information is based on the latest product information available at the time of printing.

MODULARITY

Molteni & C

3-4—  
16

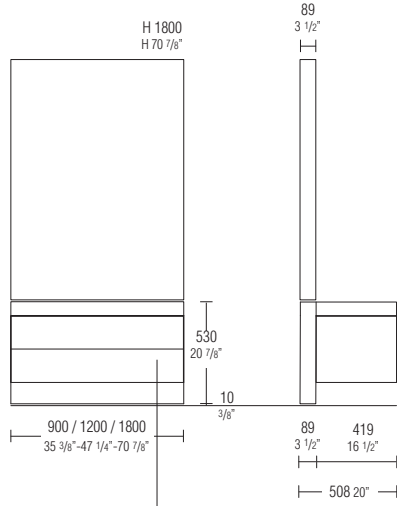


- 1 Left lateral panel
- 2 Central panel
- 3 Right lateral panel
- 4 Upper LED lighting and central LED lighting optional + Remote control kit
- 5 Support shelf
- 6 Tray
- 7 Wall-mounted storage unit
- 8 Open wall unit or with doors
- 9 Wall-mounted bookcase
- 10 Display stand
- 11 Display cabinets

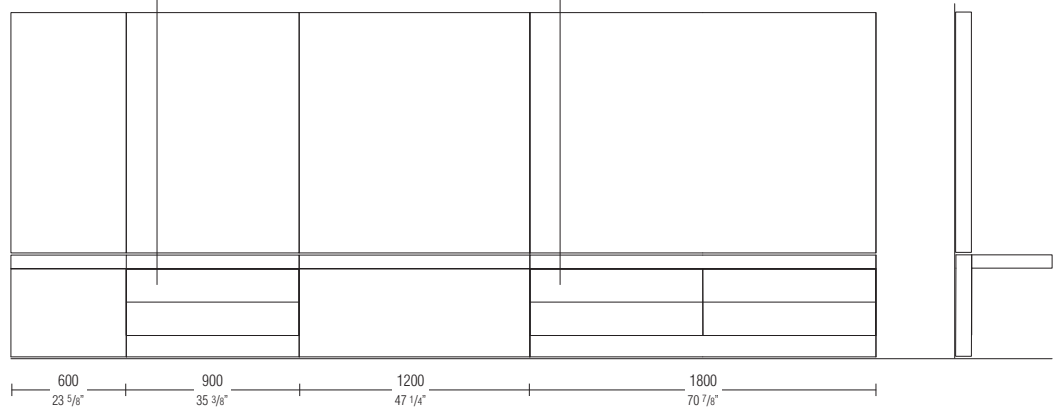
**Modular panelling**  
W 600/900/1200/1800 mm  
H 540/732 mm - Tot H from floor 1800 mm

**MODULARITY**

**Modularity  
of individual  
panelling**



**Modularity  
of modular  
panelling**



Suspended containers are always of the same width as the panelling since they hook onto the upright sections

Molteni & C

5—  
16

**DATASHEET**

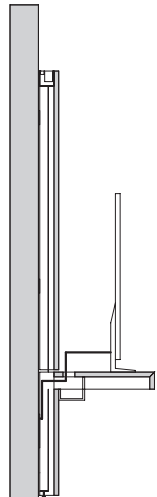
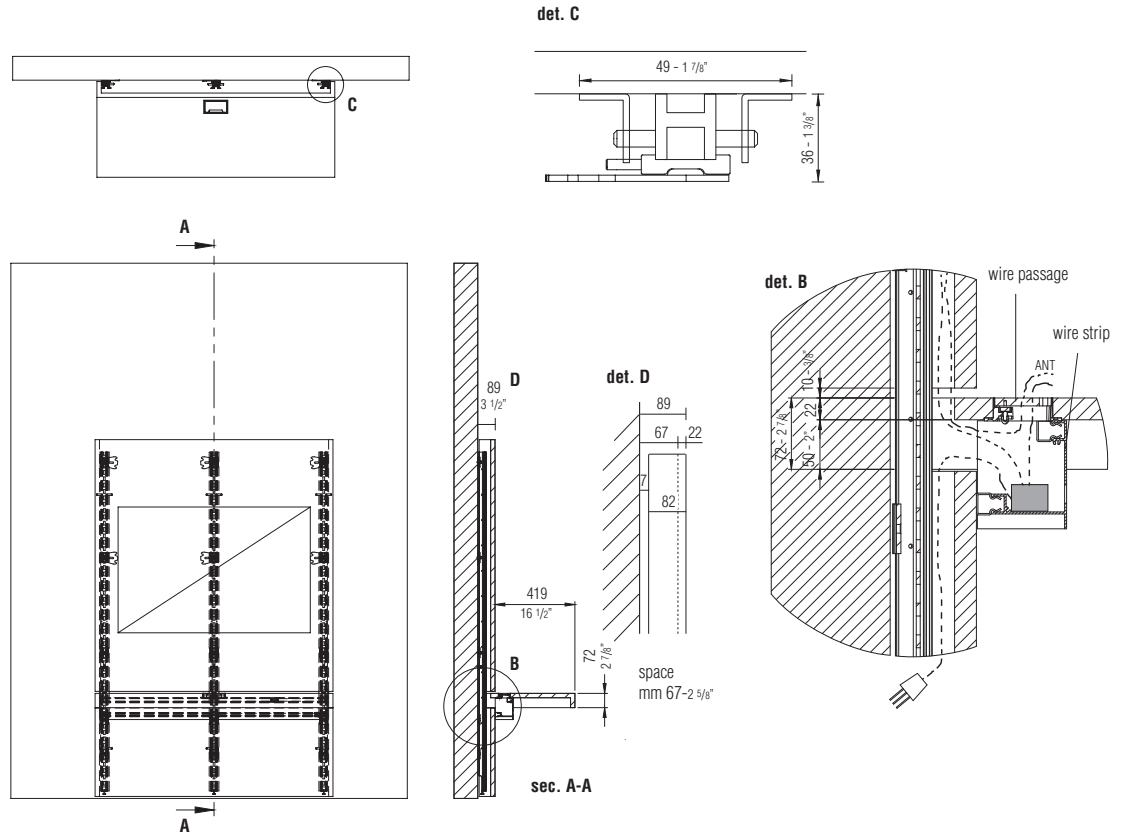
REGISTERED  
DESIGN

IX.2021

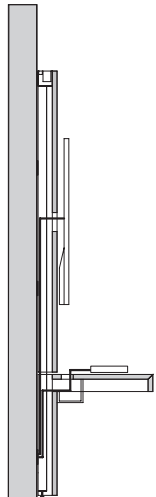
**EXAMPLE OF WIRE PASSAGE**

Molteni & C

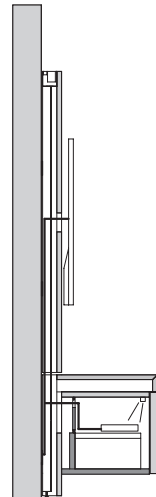
6—  
16



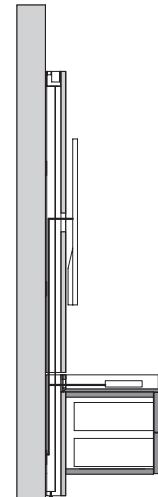
Solution 1  
TV standing on support shelf



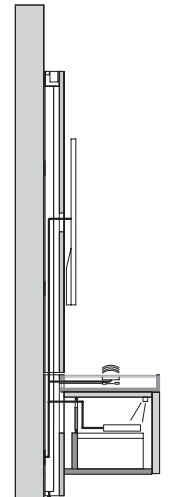
Solution 2  
TV hanging from panelling  
and decoder standing on  
support shelf



Solution 3  
TV hanging from panelling  
and decoder housed inside  
the container with flap door -  
signal transmitted by IR



Solution 4  
TV hanging from panelling,  
decoder, console or PC  
standing inside the tray



Solution 5  
TV hanging from panelling  
and decoder housed inside  
the container with flap door -  
signal transmitted by IR and  
tray with induction and USB  
charging box

**DATASHEET**

REGISTERED  
DESIGN

IX.2021

## DIMENSIONS

**Individual panelling D 82 (89 from the wall)**  
**H1 from the ground 540**  
**Total H from the ground 1800**

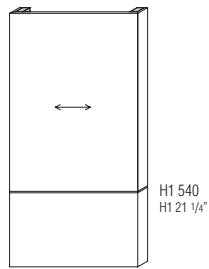
The panels can be reduced in width considering a surcharge (per module).  
 Consider a space of 15 mm in width to mount the panels.

Molteni & C

7—  
16

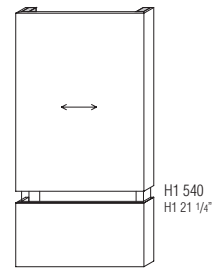
All panelling is equipped to receive hanging elements in the upper part

### panelling



W 900    W 1200    W 1800  
**PIC09/18A    PIC12/18A    PIC18/18A**

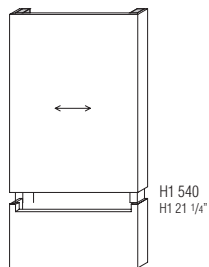
### panelling for support shelf



W 900    W 1200    W 1800  
**PIC09/18B    PIC12/18B    PIC18/18B**

All panelling is equipped to receive hanging elements in the upper part

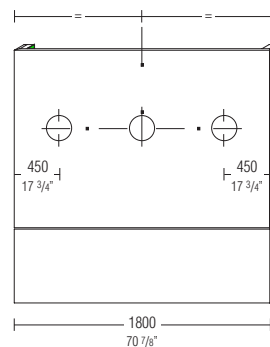
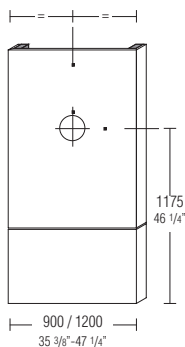
### panelling for hanging container and free-standing container with tray or support shelf



W 900    W 1200    W 1800  
**PIC09/18C    PIC12/18C    PIC18/18C**

**Cannot be made on mirror-finished panelling**

### work for TV cable passage (to be requested on the order form)



## DATASHEET

REGISTERED  
DESIGN

IX.2021

## DIMENSIONS

**Modular panelling D 82 (89 from the wall)**  
**H1 from the ground 540**  
**Total H from the ground 1800**

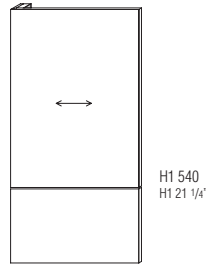
The panels can be reduced in width considering a surcharge (per module).  
 Mirror-finished panels cannot be fitted with wire passages and TV sets cannot be fastened to them.  
 Consider a space of 15 mm in width to mount the panels.

Molteni & C

8—  
16

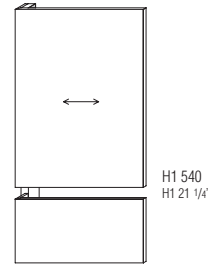
All panelling is equipped to receive hanging elements in the upper part

### left-sx panelling



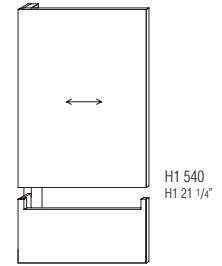
W 600 W 900 W 1200 W 1800  
**PSC06/18A PSC09/18A PSC12/18A PSC18/18A**

### left-sx panelling for support shelf



W 600 W 900 W 1200 W 1800  
**PSC06/18B PSC09/18B PSC12/18B PSC18/18B**

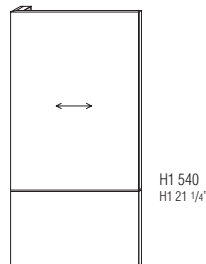
### left-sx panelling for hanging container and free-standing container with tray or support shelf



W 600 W 900 W 1200 W 1800  
**PSC06/18C PSC09/18C PSC12/18C PSC18/18C**

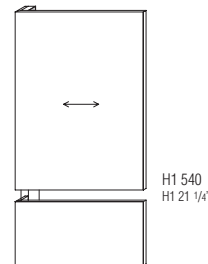
All panelling is equipped to receive hanging elements in the upper part

### central panelling



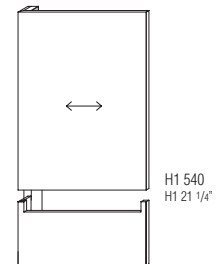
W 600 W 900 W 1200 W 1800  
**PCC06/18A PCC09/18A PCC12/18A PCC18/18A**

### central panelling for support shelf



W 600 W 900 W 1200 W 1800  
**PCC06/18B PCC09/18B PCC12/18B PCC18/18B**

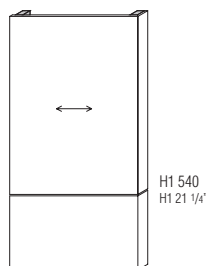
### central panelling for hanging container and free-standing container with tray or support shelf



W 600 W 900 W 1200 W 1800  
**PCC06/18C PCC09/18C PCC12/18C PCC18/18C**

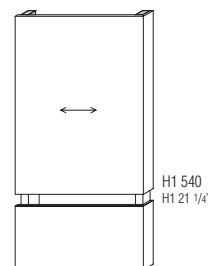
All panelling is equipped to receive hanging elements in the upper part

### right-dx end panelling



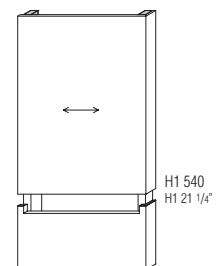
W 600 W 900 W 1200 W 1800  
**PDC06/18A PDC09/18A PDC12/18A PDC18/18A**

### right-dx end panelling for support shelf



W 600 W 900 W 1200 W 1800  
**PDC06/18B PDC09/18B PDC12/18B PDC18/18B**

### right-dx end panelling for hanging container and free-standing container with tray or support shelf



W 600 W 900 W 1200 W 1800  
**PDC06/18C PDC09/18C PDC12/18C PDC18/18C**

DATASHEET

REGISTERED  
DESIGN

IX.2021

[moltenigroup.com](http://moltenigroup.com)

Dimensions in millimeters and inches. The right to discontinue and make changes is reserved. This information is based on the latest product information available at the time of printing.

## DIMENSIONS

### Wall panelling lighting

It is possible to light the panelling by inserting LED bars, along the entire length of the composition, in the top part, in the central part, or both.

It is possible to connect the system to a socket with switch, or to use a radio control kit (optional).

Molteni & C

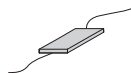
9—  
16

**LED bars 8W per metre  
max length 3000 mm**  
for calculations, consider the sum  
of all modules  
(3000° K)



per linear meter  
**EBIML**

**power supply  
unit 100W**



**EAL1**

**connector  
for power supply  
units**



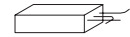
**EC01**

**radio control kit  
with brightness  
setting  
(1 per power supply  
unit)  
optional**



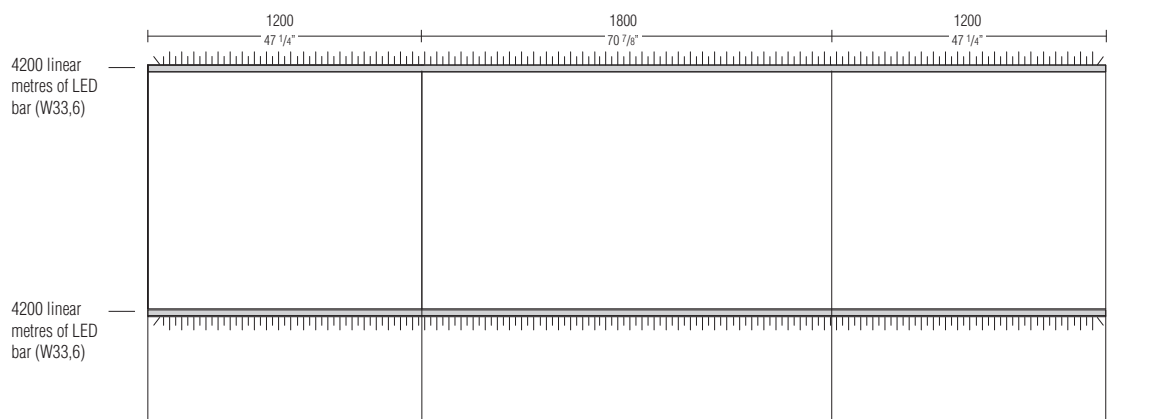
**EKRR1**

**DALI kit  
(for DOMOTICA)**  
n. 1 for each  
power supply unit  
cannot be used with  
radio remote control



**EKDA1**

### Example of lit wall



n° 1 power supply unit **EAL1**  
n° 1 connector **EC01**  
n° 1 radio control kit **EKRR1**

### DATASHEET

REGISTERED  
DESIGN

IX.2021



## DIMENSIONS

### Support shelf D 419 H 72

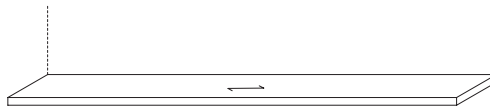
Supporting shelves can be reduced in width considering a surcharge each.

The support shelf is always equipped with the side brackets, while the central brackets must be added according to the modularity of the composition.

Molteni & C

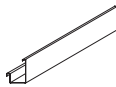
10—  
16

#### support shelf



W 600	W 900	W 1200	W 1500	W 1800	W 2100	W 2400	W 2700	W 3000
MAP4/06	MAP4/09	MAP4/12	MAP4/15	MAP4/18	MAP4/21	MAP4/24	MAP4/27	MAP4/30

#### detachable track underneath the support shelf

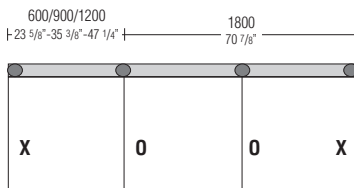


W 900	W 1200	W 1800
MCS09	MCS12	MCS18

#### central bracket for support shelf



ST4



X = included in the price

O = to be added

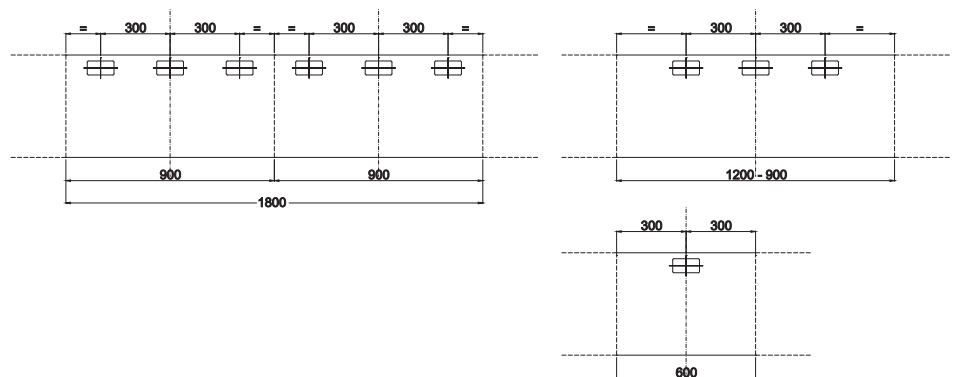
#### wire passage for support shelf W 112 D 57



EPA3

#### Positioning wire passage on the support shelf

The cable gland on the supporting shelf can be positioned in relation to the modules as shown in the specified drawings



DATASHEET

REGISTERED  
DESIGN

IX.2021

**DIMENSIONS**

**Tray**  
D 419 H 72

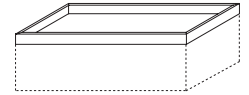
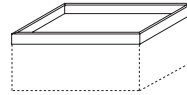
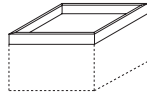
**Reductions**  
No reductions possible

Always to be used resting  
on suspended or  
free-standing containers

**tray**  
W 600

W 900

W 1200



VA4/06

VA4/09

VA4/12

**Molteni & C**

11—  
16

finishes:  
ivory  
dark brown  
grey  
mink

**bottoms in Eco Skin**  
for trays W 600

for trays W 900

for trays W 1200



VE4/06

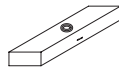
VE4/09

VE4/12

Including the cost  
of adding the wire passage  
to the tray

**charging module**  
W 150 D 407 H 56  
a) Qi inside wireless recharge  
b) 2 USB recharge plugs

**wire passage**  
on the tray  
W 112 D 57



EMR1



EPA5

**tray wire passage position and  
charge module position**

W 600

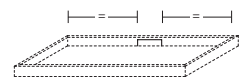
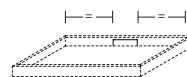
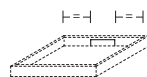
W 900

W 1200

central

central

central



right/left

right/left

right/left



right version

right version

right version

**DATASHEET**

REGISTERED  
DESIGN

IX.2021

## DIMENSIONS

### Hanging container D 419 H 347

### Reductions No reductions possible

Containers with flap door can be equipped with a wire passage, which must be indicated in the order phase.  
The inside is clear of the "T" shelf (optional).

# Molteni & C

Always to be used under  
the support shelf or with  
top tray

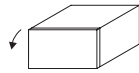
Including fastening  
brackets

### W 600 with pressure-opening flap door

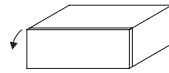
### W 900

### W 1200

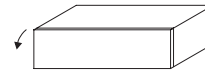
### W 1800 (W 900 + W 900)



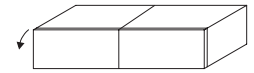
matt lacquer structure wood structure  
**CQSR06/34**



matt lacquer structure wood structure  
**CQSR09/34**



matt lacquer structure wood structure  
**CQSR12/34**



matt lacquer structure wood structure  
**CQSR18/34**

12—  
16

Always to be used under  
the support shelf or with  
top tray

Including fastening  
brackets

### W 600 with drawers

usable space  
W 513 D 326 H 83

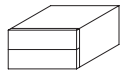
### W 900

usable space  
W 813 D 326 H 83

### W 1200

usable space  
W 1113 D 326 H 83

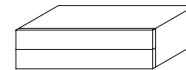
### W 1800 (W 900 + W 900)



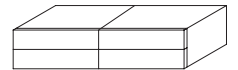
matt lacquer structure wood structure  
**CQSC06/34**



matt lacquer structure wood structure  
**CQSC09/34**



matt lacquer structure wood structure  
**CQSC12/34**



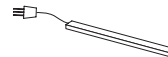
matt lacquer structure wood structure  
**CQSC18/34**

### additional "T" shelf H 151 for flap door containers



W 600 RQT06 W 900 RQT09/15 W 1200 RQT12/15

### TV signal transmitting/receiving system with LED light for containers with flap door (transmission frequency from 30 to 38 KHz)



ETV1

## DATASHEET

REGISTERED  
DESIGN

IX.2021

## DIMENSIONS

### Wall unit open or with doors

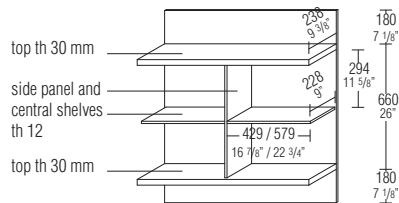
The elements can be hung from the panelling as shown in the composition diagrams, using open wall units with the addition of sides panels and glass doors. To make up wall units with LED spotlights, consider\_ kit with 4 spotlights, power supply unit and, if no provision has been made for a controlled socket, the radio control kit. The lighting system for wall units is separate from that for the panelling, but can be included in that for bookcases and glass cabinets, if these do not exceed 100W.

LED light 3000°K.

No reductions or changes of any kind are available. The glass sides must only be used when a door is included.

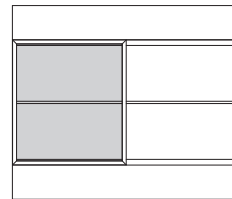
### Composition diagrams

#### Open

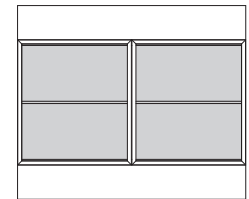


#### With 1 door

(right-dx or left-sx)



#### With 2 doors



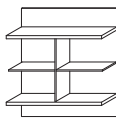
left-sx version

Molteni & C

13—  
16

#### open wall units D 252 H 1020

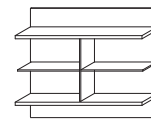
#### W 900



tops, side and central shelves  
matt lacquered  
GPS09/10

tops, side and central shelves  
in wood

#### W 1200



tops, side and central shelves  
matt lacquered  
GPS12/10

tops, side and central shelves  
in wood

#### glass door W 448 H 658 th 25



GABV04/06

#### glass door W 598 H 658 th 25



GABV06/06

#### glass side panel H 600 D 238 th 10

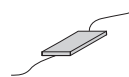


GSV2/06

#### kit of 4 spotlights W5

EFK4

#### power supply unit 100W



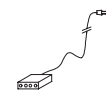
EAL1

#### radio control kit with brightness setting (1 per power supply unit) optional



EKRR1

#### connector for power supply units



EC01

#### DATASHEET

REGISTERED  
DESIGN

IX.2021

## DIMENSIONS

### Bookcase D 252

- To create bookcases with LED lighting consider: LED increase, power supply unit and, if there is no pre-fitted element for the switched socket, also the remote control kit.

- The bookcase lighting system is separate from the one for the panelling, but it can be integrated with the one for the glass cabinets if they do not exceed 100W.
- The lighting system includes LEDs on all shelves in the bookcase, excepted the lower shelf.
- 3000° K LED light

### Reductions

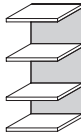
No reductions possible

Molteni & C

14—  
16

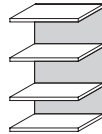
#### H 1020 4 shelves

W 450  
12 watt



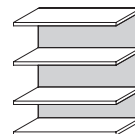
matt lacquer  
back  
LDS04/10

W 600  
15 watt



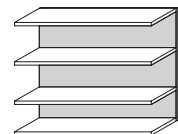
matt lacquer  
back  
LDS06/10

W 900  
22,5 watt



matt lacquer  
back  
LDS09/10

W 1200  
30 watt



matt lacquer  
back  
LDS12/10

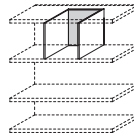
finishes:  
ivory  
dark brown  
dove grey  
black  
natural  
mud green

### Bookcase accessories

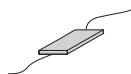
partition  
W 300 H 298 D 238



DVL03



power supply  
unit 100W



EAL1

radio control kit  
with brightness setting  
(1 per power supply unit)  
optional



EKRR1

connector  
for power supply  
units



EC01

### DATASHEET

REGISTERED  
DESIGN

IX.2021

## DIMENSIONS

**Showcase**  
**D 150**

**Reductions**  
No reductions possible

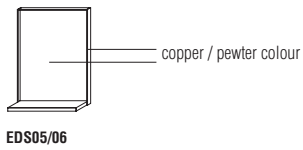
**Max capacity of the shelf 5 kg**  
**evenly distributed**

---

**H 686**  
**W 580**

# Molteni & C

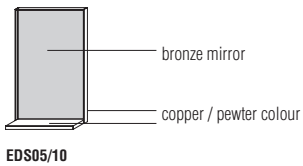
**15**—  
16



**Showcase**  
**with mirror**

**H 1016**  
**W 580**

In the order, specify the finish  
of the perimeter profile and  
shelf (pewter colour /  
copper lacquer)



## DATASHEET

REGISTERED  
DESIGN

IX.2021

## DIMENSIONS

### Glass cabinet D 300 Glass side

- Pewter colour / copper painted profile.
- Transparent stopsol glass.
- Optional interior lighting.
- To create glass cabinets with LED lighting consider: LED increase, power supply unit and, if there is no pre-fitted element for the switched socket, also the remote control kit.

- The glass cabinet lighting system is separate from the one for the panelling, but it can be integrated with the one for the bookcases if they do not exceed 100W.
- Provision is made to position the LED bar in the lid.
- 3000° K LED light

#### Reductions

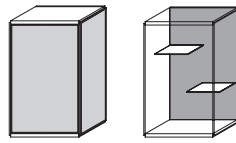
No reductions possible

# Molteni & C

16—  
16

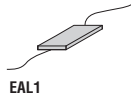
**H 1020**  
**W 600**  
5 watt  
opening only right

inside layout



pewter colour/copper  
lacquered back  
**VTSV06/10**

**power supply  
unit 100W**



**EAL1**

**radio control kit  
with brightness setting  
(1 per power supply unit)  
optional**



**EKRR1**

**connector  
for power supply  
units**



**EC01**

## DATASHEET

REGISTERED  
DESIGN

IX.2021