

MIDJ

Calla S SG PP_TS Stool

design Fabrizio Batoni, 2019



Calla swivel and height adjustable stool with metal base and seating in polypropylene. Seat upholstered in fabric, leather or faux leather.

Colors and Materials

Structure



Papaya orange steel



Light blue metal



White steel



Ocean blue steel



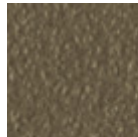
Bronze metal



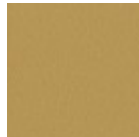
Ash grey metal



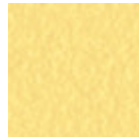
Sand steel



Fango steel



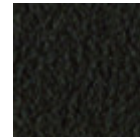
Golden yellow metal



Pastel yellow steel



Light grey steel



Brown steel



Black steel



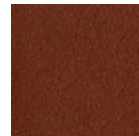
Ocher steel



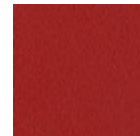
Facepowder pink metal



Red steel



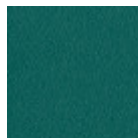
Bulgaro red metal



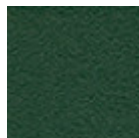
Cherry red metal



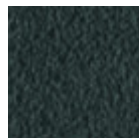
Sage green metal



Pine green steel



Dark green metal



Grafite metal

Coating

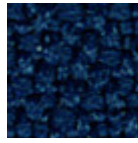
Polypropylene

10 Colors

Extensions



Secret faux leather
23 Colors



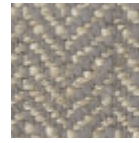
Mirage fabric
15 Colors



Cotton Club fabric
14 Colors



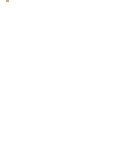
Velvet Superb
15 Colors



Second fabric
11 Colors



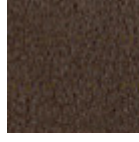
Main Line Flax fabric
16 Colors



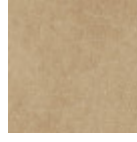
Remix 3 fabric
19 Colors



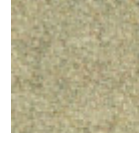
Uniform Melange Fabric
7 Colors



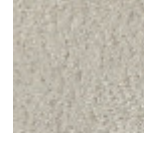
Vintage leather
8 Colors



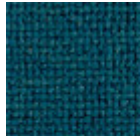
Vintage faux leather
12 Colors



Fenix Wool fabric
16 Colors



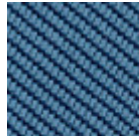
Novabuk fabric
17 Colors



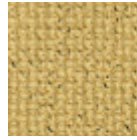
Manhattan fabric
13 Colors



Visual fabric
13 Colors



Tessuto Oceanic
13 Colors

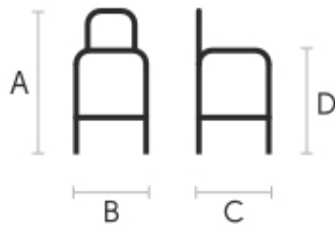


Yoredale fabric
14 Colors



Fiore leather
21 Colors

Dimensions



	cm	inch
A	98/113	38.6/44.5
B	46	18.1
C	52	20.5
D	66/81	26/31.9

Volumetric Details

Weight 17 Kg
Volume 0.26 mc
Package 1

Materials Certifications

Dark green metal

The technologies used in the previous phase of powder coating play a fundamental role in the final result of the processing. They are in fact essential to increase adherence paint on the metal surface and then guarantee its duration over time. The metal frames, following a total cleaning of the surface, pass through chemical conversion processes, creating a compact base that allows for better adhesion of the subsequent treatment. In the last phase the object subjected to the powder coating process is placed in a polymerization oven, going to form an adherent and extremely tight layer durable. This particular paint job is ideal for outdoor use.

To clean the surface, use a damp microfiber cloth with neutral soap or specific metal cleaning products. Avoid hitting or rubbing the surface with sharp objects. Do not use scourers or other abrasive materials, since they would inevitably scratch the surface. Do not leave rusty iron objects on the surface for too long.

These surface treatments are not suitable for outdoor use, but they guarantee excellent resistance to frequent use, dirt and dust.

Materials Certifications

Polypropylene

Polypropylene is a resistant, non-toxic, odorless, heat resistant and easy to clean plastic material. It is also suitable for outdoor use. Our polypropylene is a material reinforced with glass fiber: an option with excellent mechanical properties that allows the product to be solid and resistant. This material has a marked resistance to fading: a treatment with UV stabilizer and AS antistatic protection works to prolong the beauty of the product by slowing the fading process. However, by exposing the chair to the sun and atmospheric agents for very long periods, the color can undergo alterations. As a thermoplastic material, it is 100% recyclable.

CLEANING AND MAINTENANCE

Polypropylene seats are easy to clean, and do not require the use of specific products, except in the case of stubborn and hard to remove stains. For simple and effective cleaning, use a microfiber cloth soaked in water or a solution of water and neutral soap. In case of stubborn stains, it is possible to act directly on them with a neutral detergent, always with the help of a microfiber cloth. Then rinse with water. Avoid abrasive sponges, stain removers and granular cleaners that could scratch the surface. If using a chlorine-based cleaner, rinse and do not dry in direct sunlight.

These tips are cleaning recommendations and do not guarantee complete stain removal.

We recommend that you always test the cleaning method on a hidden part of the item to check the resistance of the material.