

MIDJ

Ola Bench BN M Lounge Armchair

design Paolo Vernier, 2016

Ola two seater bench in lacquered metal.

Suitable for outdoor use and stackable up to four units.



Colors and Materials

Structure



White steel



Black steel



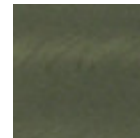
Sand steel



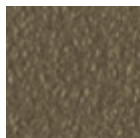
Brown steel



Grafite metal



Industrial steel



Fango steel



Bronze metal



Pastel yellow steel



Ocher steel



Red steel



Sage green metal



Light blue metal



Ocean blue steel

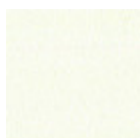


Light grey steel

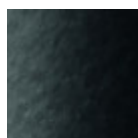


Facepowder pink metal

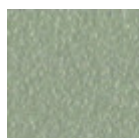
Coating



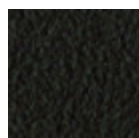
White steel



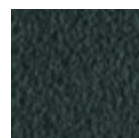
Black steel



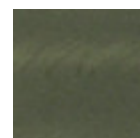
Sand steel



Brown steel



Grafite metal



Industrial steel



Fango steel



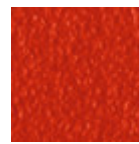
Bronze metal



Pastel yellow steel



Ocher steel



Red steel



Sage green metal



Light blue metal



Ocean blue steel

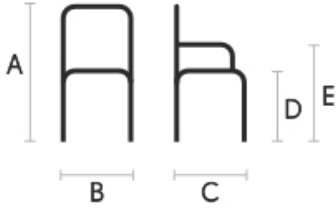


Light grey steel



Facepowder pink metal

Dimensions



	cm	inch
A	82	32.3
B	114	44.9
C	56	22.1
D	46	18.1
E	65	25.6

Volumetric Details

Weight 14 Kg
 Volume 0.56 mc
 Package 1