

MIDJ



Slim S M Chair

design Paolo Vernier, 2017

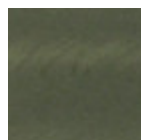
The Slim chair with sled base is available for indoor and outdoor use.

The outdoor version is available in 15 weather-resistant finishes.

Chairs are stackable up to four pieces and have the CATAS certification.

Colors and Materials

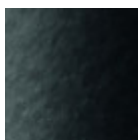
Structure



Industrial steel



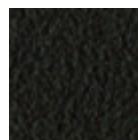
White steel



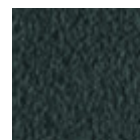
Black steel



Sand steel



Brown steel



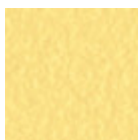
Grafite metal



Fango steel



Bronze metal



Pastel yellow steel



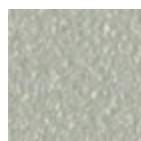
Ocher steel



Light blue metal



Ocean blue steel

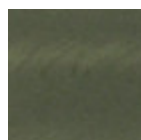


Light grey steel



Facepowder pink
metal

Coating



Industrial steel



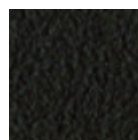
White steel



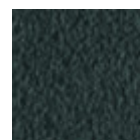
Black steel



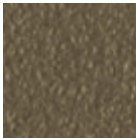
Sand steel



Brown steel



Grafite metal



Fango steel



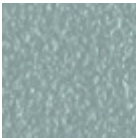
Bronze metal



Red steel



Sage green metal



Light blue metal



Ocean blue steel



Light grey steel



Facepowder pink metal

Dimensions



	cm	inch
A	76	29.9
B	51	20.1
C	51	20.1
D	46	18.1

Volumetric Details

Weight 7 Kg
Volume 0.29 mc
Package 1

Certifications

CATAS[®]
Catas
EN 1728