

MIDJ

Armando Table

design Balutto Associati, 2011

Armando fixed table with metal frame and top. Available in different dimension, height 76 cm (29.9 inches).

Height 110 cm (43.3 inches) also available for every variant.



Colors and Materials

Structure



White steel

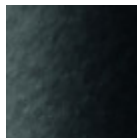


Black steel

Coating



White steel



Black steel

Dimensions



	A (cm)	B (cm)	C (cm)
	(inch)	(inch)	(inch)
80x80 (cm)	76	80	80
(inch)	29.9	31.5	31.5
90x90 (cm)	76	90	90
(inch)	29.9	35.4	35.4
160x90 (cm)	76	160	90
(inch)	29.9	63	35.4

	A (cm)	B (cm)	C (cm)
	(inch)	(inch)	(inch)
200x100	76	200	100
(cm)	29.9	78.7	39.4
(inch)			
280x100	76	280	100
(cm)	29.9	110.2	39.4
(inch)			

Volumetric Details

Weight 30 Kg

Volume 0.15 mc

Package 2