

MIDJ

P47 CT-L Coffee Table

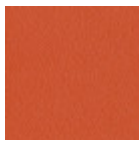
design Franco Poli, 2021

The P47 coffee table is a piece of furniture that speaks of style and functionality in the most refined environments. With a transversal look, thanks to the possibility of chromatic customization, it adds a touch destined to be noticed.



Colors and Materials

Structure



Papaya orange steel



Light blue metal



White steel



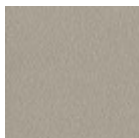
Ocean blue steel



Bronze metal



Sand steel



Ash grey metal



Fango steel



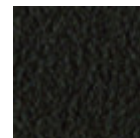
Golden yellow metal



Pastel yellow steel



Light grey steel



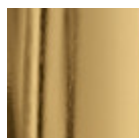
Brown steel



Black steel



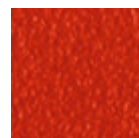
Ocher steel



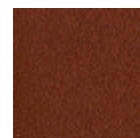
Golden champagne



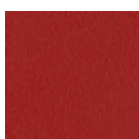
Facepowder pink metal



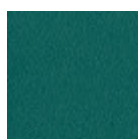
Red steel



Bulgaro red metal



Cherry red metal



Pine green steel



Sage green metal



Black Nickel



Pink Gold

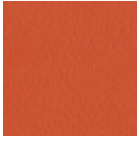


Golden bronze



Chrome

Coating



Metallo arancio papaya



Metallo azzurro



Metallo bianco



Metallo blu oceano



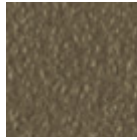
Metallo Bronzo



Metallo grigio cenere



Metallo corda



Metallo fango



Metallo giallo oro



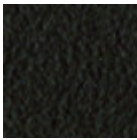
Metallo giallo pastello



Metallo grafite



Metallo grigio chiaro



Metallo Marrone



Metallo nero



Metallo ocre



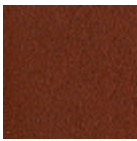
Oro champagne



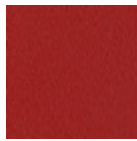
Metallo rosa cipria



Metallo rosso



Metallo rosso bulgaro



Metallo rosso ciliegia



Metallo verde pino



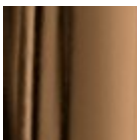
Metallo verde salvia



Nichel Nero



Oro rosa



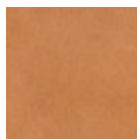
Bronzo dorato

Extensions



TK Hide

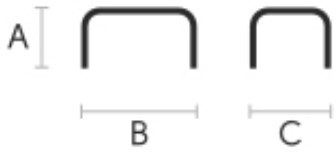
13 Colors



Tuscan hide

6 Colors

Dimensions



| | cm | inch |
|---|----|------|
| A | 40 | 15.7 |
| B | 60 | 23.6 |
| C | 58 | 22.8 |