

mdf italia



© COPYRIGHT 2023 MDF ITALIA SRL SOCIETA' UNIPERSONALE

2018

YALE BED

Designed by Jean Marie Massaud

Jean Marie Massaud's latest creations were conceived for a functional and contemporary home, expressing a style and a way of living in which formal simplicity doesn't exclude creativity, quality, innovation and a sophisticated aesthetics.

The designer extends Yale X's project idea to the night area, proposing again Yale's softness and comfort for the headboard, as well as the refined aesthetics of the sofa's stand as the hallmark of the bedframe.

The bed concept means a welcoming headboard, capable to offer the best comfort to relax, read or watch TV, a good mattress and a comfortable pillow.

The bed is offered in two different versions – with low headboard H90 cm and with high headboard H103 cm – with fabrics or leather coating, to meet different comfort needs and taste requirements.

STRUCTURE

Structure in extruded aluminium, die-cast legs in aluminium. The structure is painted matt in the colours white, bronze and lead black.

The upholstery in fabric or leather covers every part of the headboard and is completely removable.

These contrasting seams characterise and identify the Yale Bed collection, only for the high headboard variant.

Available in the colours white, medium grey and anthracite, which can be selected and combined by the client.

MATRESS

MDF Italia offers 4 typologies of mattresses in 3 different dimensions: 160x200 cm, 180x200 cm, 200x200 cm.

- Clima: orthopaedic Bonnell biconical spring mattress made of hardened and phosphatised steel (Ø 2,2 mm, 360 springs measuring 170x200 cm).
- Comfort: "Individually Boxed" spring mattress that provides exceptional standard of comfort due to: springs are independent and "individually boxed", springs sections are divided into differentiated-support sections.
- Comfort Plus: "Individually Boxed" spring mattress with a "Box System" combined to the structural cover made of Perforated MIND FOAM visco-elastic sheet in thermal sensitive material, that guarantee an excellent comfort whatever is the position.
- Forma: mattress made of a mono-bloc of an "ecological" product, called Waterlily™. The cellular structure of Waterlily™ enables the mattress to transpire, avoiding any retention of heat and humidity.

SLATS

Load-bearing orthopaedic platform in tubular steel with 40 30 mm section, powder coated finish. Fixed structure, with slats in laminated beech thickness 8 mm,

width 70 mm and fitted with regulating cursors. Moving the cursors along the length of the slats allows to adjust rigidity in the lower back area and adapt the bed to needs of the person and the shape of the body. Orthopaedic platform in birch plywood, thickness 20 mm, painted with water-based paints, with transversal grooves for aeration of the mattress. Ideal support for uniform comfort, rigidity and better support.

Upon request, single slats for double beds. Feasibility, costs and delivery times to be verified with our sales department.

YALE BED | LOW HEADBOARDS



W160
160x220 H90 cm



W180
180x220 H90 cm



W200
200x220 H90 cm

YALE BED | HIGH HEADBOARDS beds CLIMA, COMFORT, FORMA



W160
160x220 H103 cm



W180
180x220 H103 cm



W200
200x220 H103 cm

Finishing

The number in the dot corresponds to the number of colour/material finish.

Here below, in the section FINISH OPTIONS, please note all the colours of the materials used for this product.

BED

Structure



Matt painted

Cover



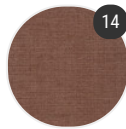
Maia



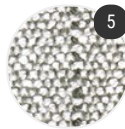
Todi



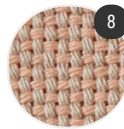
Time TL15



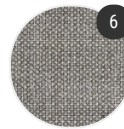
Anima



Frank



Garc



Taiga



Dune



Monaco



Natura



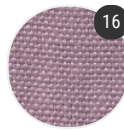
Perth



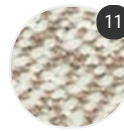
William



Paradise



Portofino



Parigi



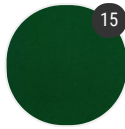
Savanna



Hero 2



Moss



Sunday



Zero



Leather



Nabuk

Finish options

STRUCTURE

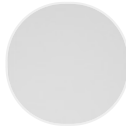
Matt painted



Matt painted
bronze X100



Matt painted
lead black
X138



Matt painted
white X053

COVER

Maia



white R217
Col. 01



ivory R220
Col. 2/2



beige R218
Col. 08



medium grey
R221 Col. 9/1



anthracite
grey R219
Col. 10

Todi



white R851
Col. 13



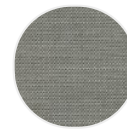
white/beige
R850 Col. 11



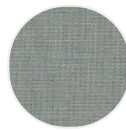
grey/sand
R846 Col. 07



light grey
R849 Col. 10



light
grey/anthracite
grey R848 Col.
09

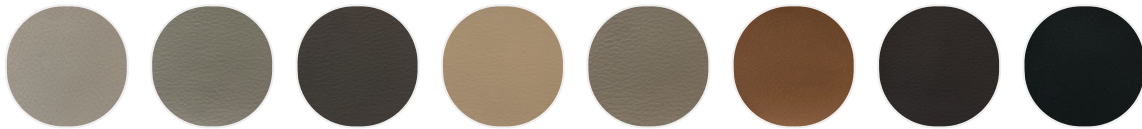


light
blue/grey
R855 Col. 19



orange/grey
R852 Col. 15

Time TL15



Ivory R879
Col. 6747

Sand 880
Col. 6776

Turtledove
R881 Col.
5800

Cream R882
Col. 5992

Beige 883
Col. 10645

Leather R884
Col. 11022

Testa di
moro R885
Col. 17500

Black R886
Col. 16



White R887
Col. 01

Light grey
R888 Col.
6777

Dark grey
R889 Col.
6791

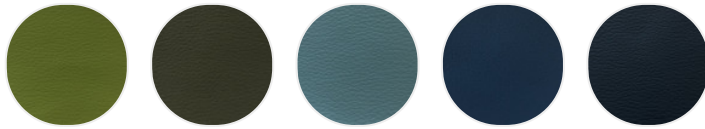
Graphite grey
R890 Col.
6792

Aubergine
R891 Col.
13800

Rust R892
Col. 12410

Red R893
Col. 7390

Yellow R894
Col. 11990



Light green
R895 Col.
16086

Dark olive
green R896
Col. 16280

Powder blue
R897 Col.
15008

Denim blue
R898 Col.
15120

Dark steel
blue R899
Col. 15660

Anima



Antique pink
R645 col.71

Panna R632
col.05

Turtledove
R633 col.10

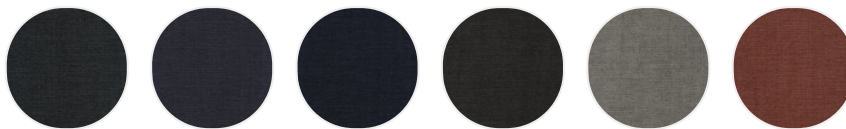
Brown R634
col.12

Ocra R635
col.19

dark red
R636 col.22

Verde
muschio
R637 col.30

light blue
R638 col.33



R639 col.35

R640 col.45

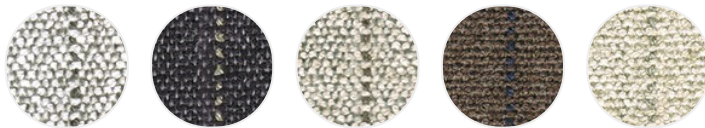
R641 col.47

R642 col.53

R643 col.54

Rosa intenso
R644 col.60

Frank



light grey-
medium grey
R352 Col.
419.003

dark grey-
beige R355
Col. 419.020

beige-brown
R353 Col.
419.010

brown-blue
R356 Col.
419.041

ivory-light
grey R354
Col. 419.011

Garc



white R534
Col.070



sand R535
Col.111



turtledove
R538 Col.416



powder pink
R536 Col.116



acid green
R540 Col.436



light grey
R533 Col.046



anthracite
grey R539
Col.424



dark blue
R537 Col.191

Taiga



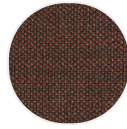
R604 Col.
90/1



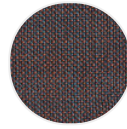
R600 Col.
02/1



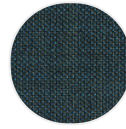
R599 Col.
01/1



R602 Col.
19/2



R603 Col.
71/1

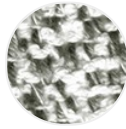


R601 Col.
19/1

Dune



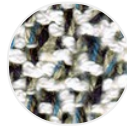
white-light
grey R364
Col. 428.103



white-
medium grey
R361 Col.
428.039



dark grey-
light grey
R357 Col.
428.000



white-blue
R359 Col.
428.034



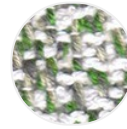
blue-beige
R363 Col.
428.050



black-beige
R358 Col.
428.010



white-red
R360 Col.
428.035



white-light
green R362
Col. 428.043

Monaco



white-beige
R313 Col.
443.000



white-light
grey R314
Col. 443.001



beige-black
R319 Col.
443.040



white-yellow
R318 Col.
443.014



white-red
R315 Col.
443.007



white-light
green R317
Col. 443.011



white-blue
R316 Col.
443.010



beige-
anthracite
grey R320
Col. 443.060

Natura



white R443
Col. 005



light grey
R440 Col. 001



beige R442
Col. 004



medium grey
R441 Col. 002

Perth



yellow R393
24



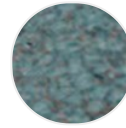
beige R385 01



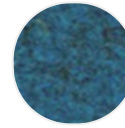
light grey
R395 30



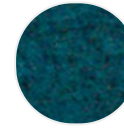
turtledove
R386 04



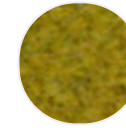
ice light blue
R387 07



light blue
R388 08



green R389
09



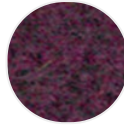
light green
R394 25



rust R392 20



orange R391
19



burgundy
R390 13



black R396 31



powder pink
R463 Col. 06



dark blue
R464 Col. 11

William



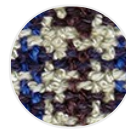
white-light
grey R375
Col. 423.080



beige-brown
R372 Col.
423.005



white-
medium grey
R376 Col.
423.091



beige-blue
R371 Col.
423.004



white-red
R373 Col.
423.051



white-light
green R374
Col. 423.072

Paradise



white R542
Col.060



light grey
R541 Col.042



sand R549
Col.320



brick-red
R543 Col.120



coral red
R548 Col.220



emerald
green R544
Col.121



sage R547
Col.141



medium grey
R546 Col.140



anthracite
grey R545
Col.124

Portofino



white R866
Col. 016



sand R867
Col. 019



turtledove
R857 Col. 001



grey R864
Col. 012



light grey
R868 Col. 100



military green
R858 Col. 002



yellow R869
Col. 103



orange R859
Col. 006



red R872 Col.
109



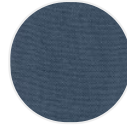
light pink
R871 Col. 108



powder pink
R860 Col. 007



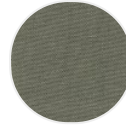
dark pink
R861 Col. 008



light blue
R862 Col. 010



avio blue
R863 Col. 011



sage R870
Col. 106



anthracite
grey R865
Col. 014

Parigi



White-beige
R429 Col. 001



beige-dark
grey R430
Col. 002



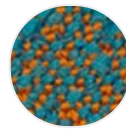
dark grey-
brown R431
Col. 003



light grey-
dark grey
R432 Col. 004



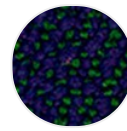
dark grey-
black R433
Col. 005



light blue-
rust R434
Col. 006



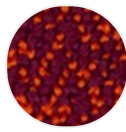
rust-beige
R435 Col. 007



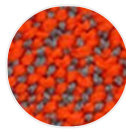
blue-green
R436 Col. 008



green-rust
R437 Col. 009



burgundy-
orange R438
Col. 010



orange-light
blue R439
Col. 011

Savanna



R590 Col. 152



R589 Col. 122



R593 Col. 622



R592 Col. 442



R591 Col. 262

Hero 2



R687 col.962 R685 col.932 R686 col.942 R684 col.882 R683 col.772 R682 col.752 R666 col.152 R681 col.732

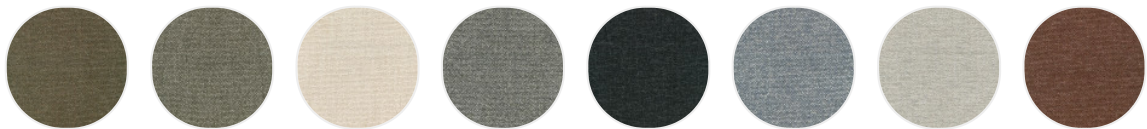


R680 col.582 R679 col.552 R678 col.542 R677 col.512 R672 col.312 R674 col.372 R673 col.352 R676 col.432



R671 col.242 R670 col.212 R669 col.192 R675 col.392 R668 col.182 R667 col.162 R665 col.102

Moss

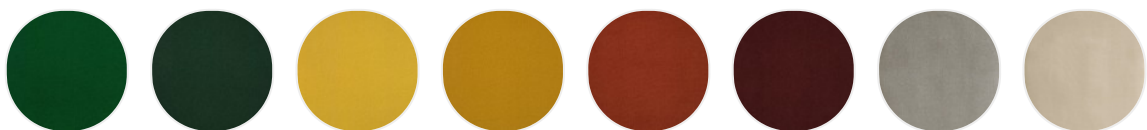


R646 col.01 R647 col.02 R648 col.04 R649 col.06 R650 col.08 R651 col.10 R652 col.11 R653 col.12



R654 col.13 R655 col.15 R656 col.19 R657 col.21 R658 col.22

Sunday



Loden R573 Col. 009 Bottle green R572 Col. 008 Lemon yellow R569 Col. 015 Mustard yellow R568 Col. 014 Orange Safran R571 Col. 006 Cayenne burgundy R570 Col. 011 Turtledove R609 Col. 030 Sand R611 Col. 034



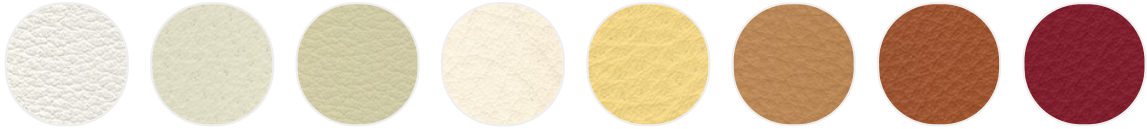
White R608 Col. 023 Beige R574 Col. 038 Powder pink R607 Col. 022 Light green R610 Col. 032 Powder blue R605 Col. 002 Dark blue R606 Col. 004 Black R575 Col. 027

Zero

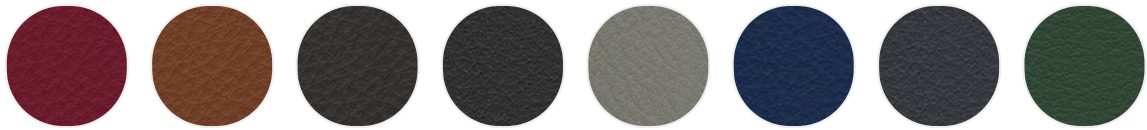


R594 Col. 001 R596 Col. 008 R598 Col. 011 R595 Col. 004 R597 Col. 010

Leather



leather white R804 leather sand R814 leather beige R803 leather ivory R802 leather yellow R808 leather apricot R801 leather rust R813 leather red R812



leather burgundy R807 leather tobacco R815 leather testa di moro R816 leather black R810 leather grey R809 leather bluette R806 leather blue R805 leather green R817

Nabuk



powder pink R826 Col. 3417 powder blue R827 Col. 3431 brown R825 Col. 3416 turtledove R823 Col. 3405 light grey R824 Col. 3414 dark grey R822 Col. 3401