



Chair with and without armrests with fixed upholstery, directly hand woven onto the structure.

The series Telar also includes an armchair, a two-seater sofa, a chaise longue, a sun bed and a pouf.

**Structure:** AISI 316 stainless steel, gloss varnished (reference colours: Mano Lucida wood sample collection), plastic spacers.

**Upholstery:** fixed, hand woven with elastic belts of different dimensions covered with a braid in Rope yarn.

**Notes:**

The structural weave is available in two different versions, which are produced with elastic belts with two different dimensions.

This product can be used also in interior environments.

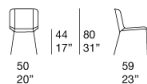
We advise to use a Winter Set protection cover.

**Awards:**

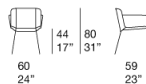
Telar series has been awarded with the RED DOT BEST OF THE BEST 2020.

Telar series has been finalist for the NYCxDESIGN AWARDS 2020.

B157DA - B157DC

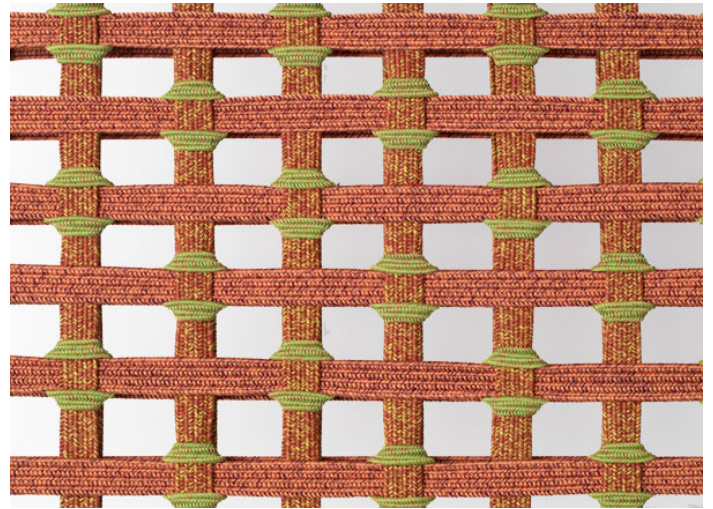


B157RA - B157RC





intreccio/weave 1A



intreccio/weave 3B