



Imperfetto is a felt rug created by joining felt elements with Punto Zigzag.

The surface of the rug is composed of squared Felt elements of cm 40 x 40 which are embroidered with Punto Matelassé.

The embroidery on each element creates an irregular squared spiral-like pattern.

The border features the Punto Cavallo.

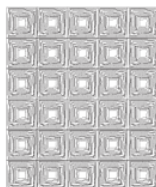
This rug can be produced only with a double layer of felt.

TAIM01



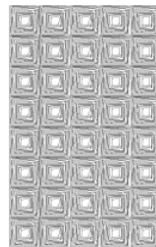
cm 200 x 200
79" x 79"

TAIM02



cm 200 x 240
79" x 94"

TAIM03



cm 200 x 320
79" x 126"