



Bisanzio is a modular rug for exterior and interior environments created by joining elements made of one- or two-colour cords.

The cord is shaped and sewn by hand to create decorating modules of about 12 x 12 cm.

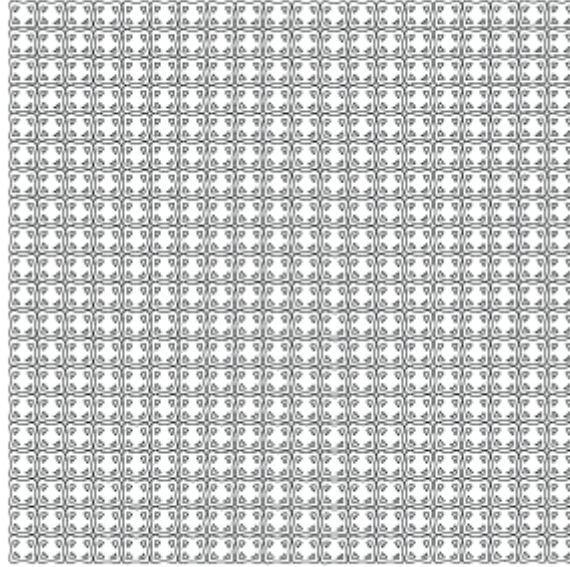
These elements are then sewn with an orthogonal placement to form the rug's surface.

The floor can be seen through the gaps within and between the elements.

Only one colour can be chosen.

The handwork and the preciousness of the designs advise against the use of Bisanzio in high traffic areas.

TABZ03



cm 240 x 240
94" x 94"