

Donna Florio is a modular rug for exterior and interior environments with handmade decoration.

The embroidery is executed with a one- or two-colour flat braid in Rope yarn on polyolefin 50 x 50 cm modules in sand colour, which form the backing of the rug.

Once embroidered, the modules are sewn by hand with a ribbon in Rope yarn in the same colour of the backing to create the surface of the rug.

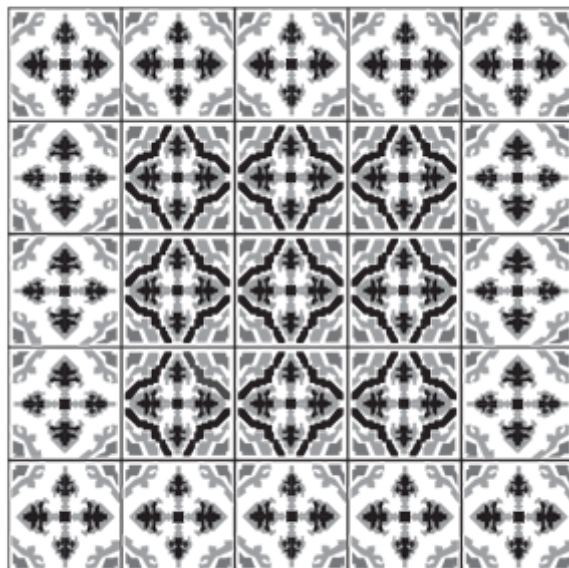
Donna Florio is decorated with two designs, one for the central part of the rug and one for the frame.

The floor can be seen through the gaps created by this production technique and the texture of the backing.

Up to a maximum of three colours can be chosen.

The handwork and the preciousness of the designs advise against the use of Donna Florio in high traffic areas.

TADR06



cm 250 x 250  
98" x 98"