

This modular rug for exterior and interior environments is created by joining elements in Maris fabric.

The surface of the rug consists of parallel strips with different dimension.

The strips are positioned according to a pre-established scheme, spaced apart orthogonally intertwined and then sewn with Zigzag stitch.

The floor can be seen through the gaps created by the intertwine technique as well as through the fabric weave.

Only one colour can be chosen.

TM55M04



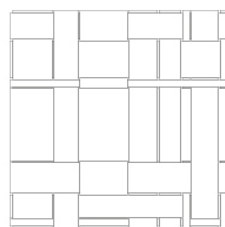
cm 200 x 200
79" x 79"

TM55M06



cm 200 x 300
79" x 118"

TM55M07



cm 300 x 300
118" x 118"