



This modular rug for exterior and interior environments is created by joining loom woven strips with a width of 100 cm made of Twitape yarn.

The strips are sawn lengthwise with Punto Zigzag; other seams are executed widthwise with Punto Zigzag as decoration of the rug's surface. They are positioned according to an alternated sequence in a pre-determined scheme.

Each seam involves the insertion, between the woven elements, of a flat braid in Twitape yarn of the same colour as the rug.

The number of strips varies according to the dimensions of the rug.

Naxos is finished along the perimeter with the same flat braid in Twitape yarn inserted between the woven elements.

Only one mélange colour can be chosen.

**ATTENTION:**

The first colour reference proposed below, TP4021, has to be considered valid both for the shades and for the kind of weaving that characterizes the Naxos rug.

Subsequent variants, from TP4022 onwards, are valid only as a colour reference.

TNXN01



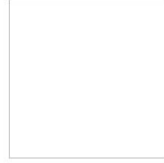
cm 200 x 200  
79" x 79"

TNXN03

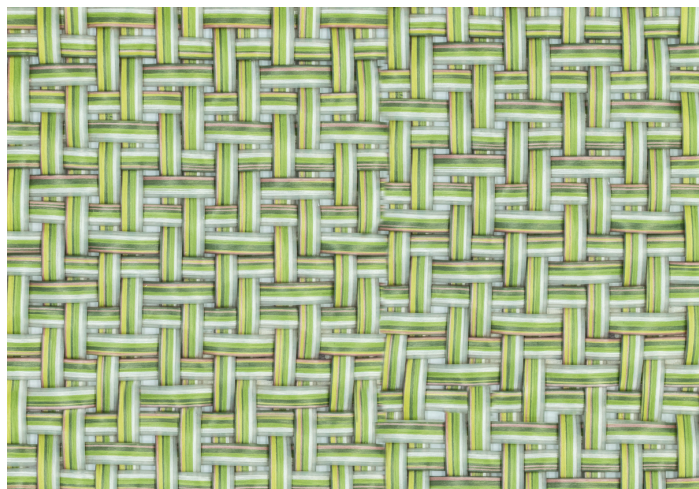


cm 200 x 300  
79" x 118"

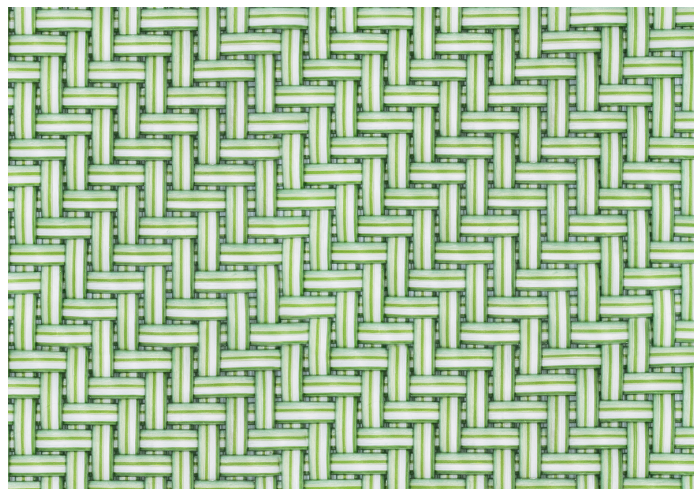
TNXN04



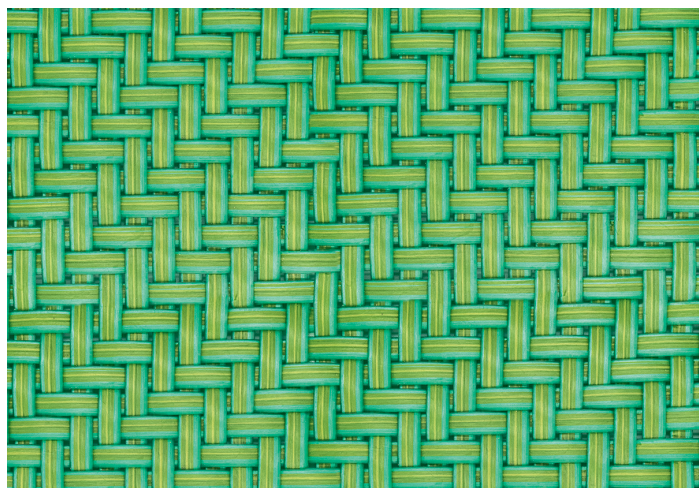
cm 300 x 300  
118" x 118"



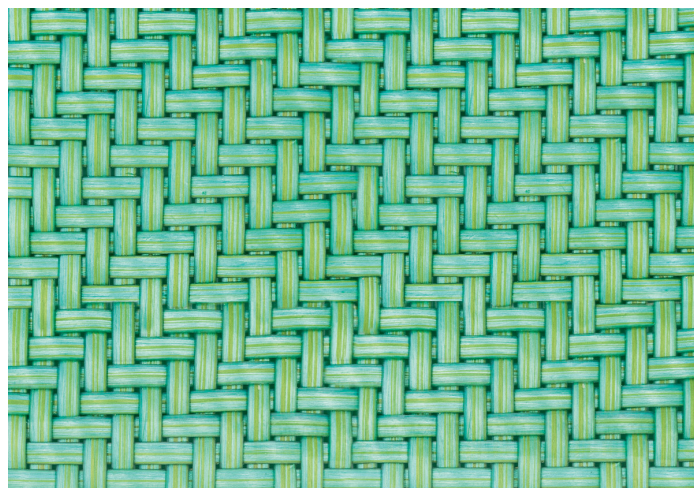
TP4021 - riferimento valido per colore e per intreccio / reference for colour and weave



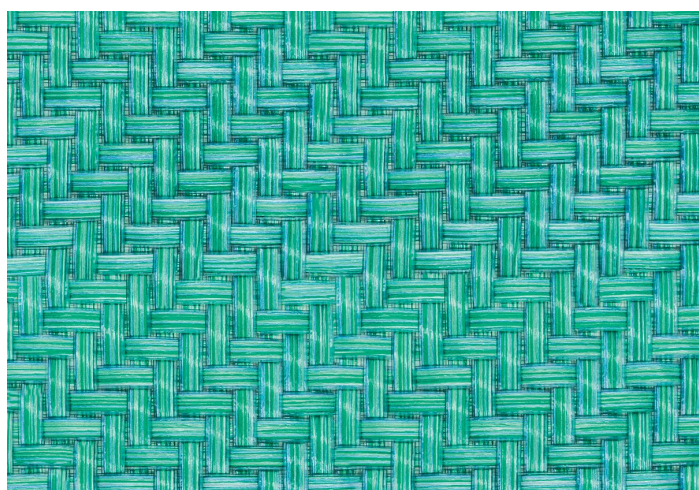
TP4022 - riferimento colore / colour reference



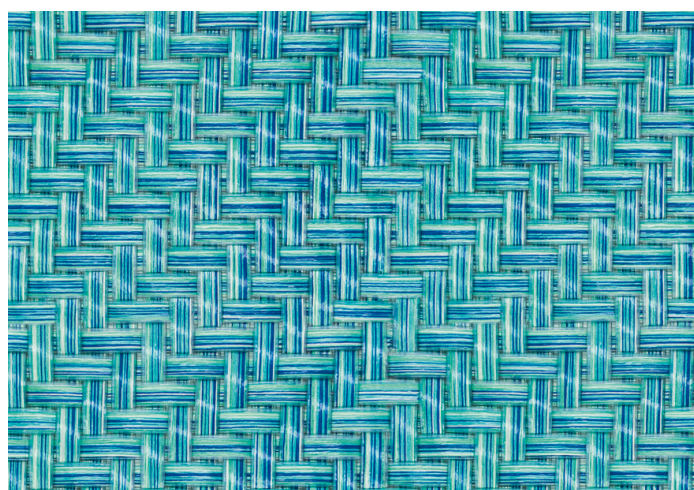
TP4034 - riferimento colore / colour reference



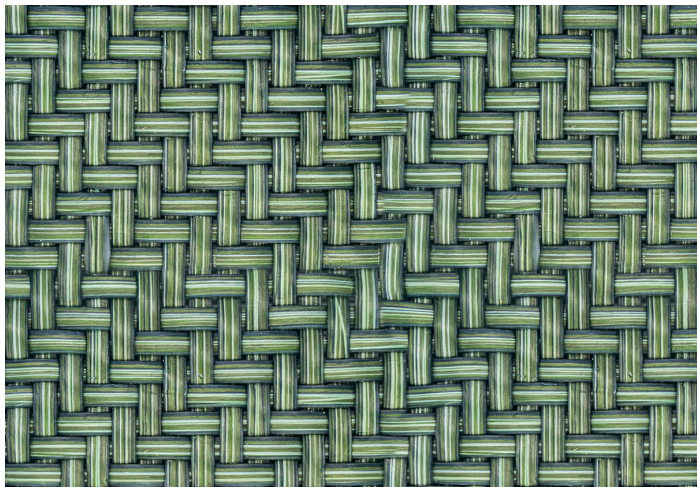
TP4023 - riferimento colore / colour reference



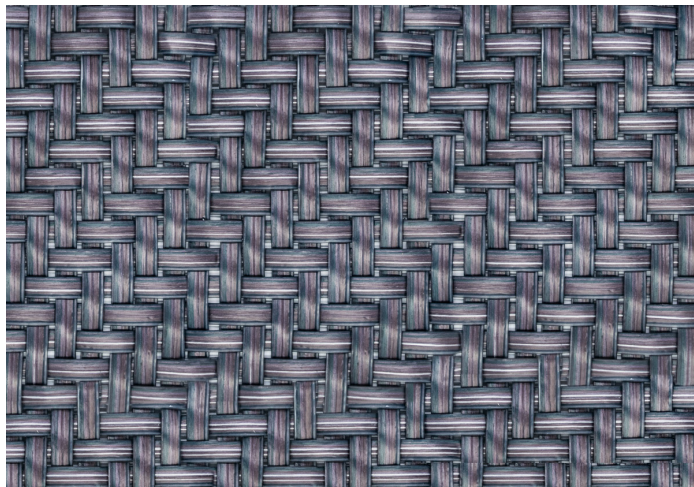
TP4036 - riferimento colore / colour reference



TP4035 - riferimento colore / colour reference



TP4019 - riferimento colore / colour reference



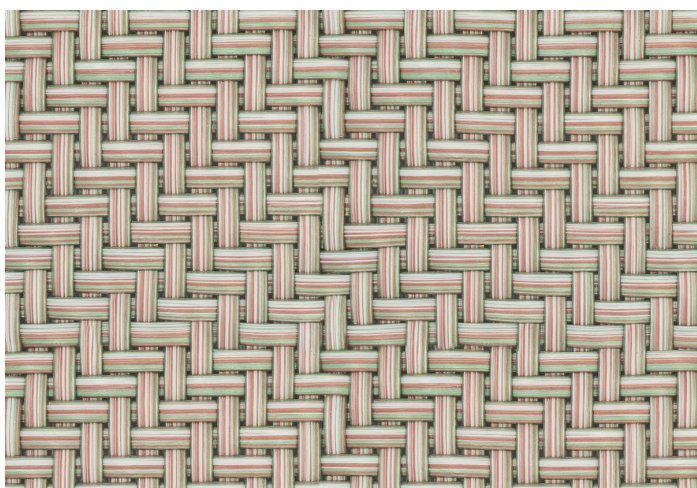
TP4029 - riferimento colore / colour reference



TP4018 - riferimento colore / colour reference



TP4030 - riferimento colore / colour reference



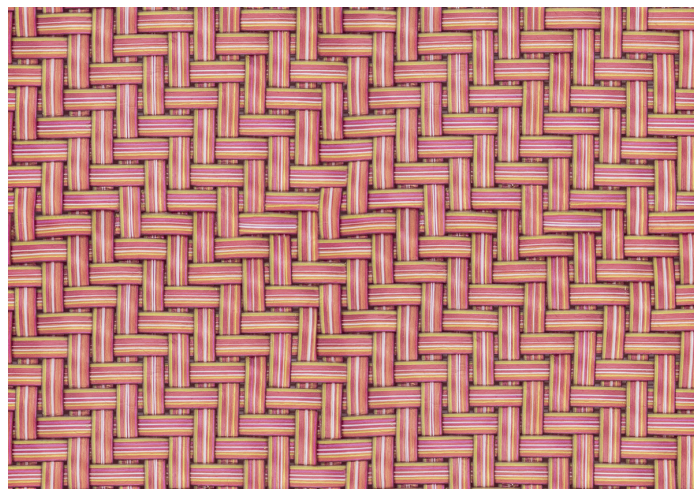
TP4033 - riferimento colore / colour reference



TP4028 - riferimento colore / colour reference



TP4027 - riferimento colore / colour reference



TP4026 - riferimento colore / colour reference