

SLIM

Design by Jordi Vilardell.

VIBIA
LIGHT IS CREATION

Reference

0920.

Application

Hanging lamps

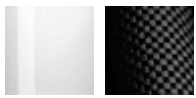
Description

Surface-mounted hanging lamp giving soft, well-aimed light thanks to its new LED fitting. Designed by Jordi Vilardell. With patterned glass diffuser and finished in white lacquered fibre or black carbon fibre.

Diffuser

Pressed-glass diffuser

Finish



0920-03. White lacquer fiber
0920-04. Black carbon fiber

Sketch



Electrical characteristics

1 x LED 3W 700mA



Total 3 W



Physical characteristics

1 Box / 0.07 x 0.19 x 1.20 m. / Vol. 0.0155 m³ /
Gross weight 2.1 kg. / Net weight 1.2 kg.

Installation and assembly

Follow instructions of the installation guide

Light distribution

Highlight

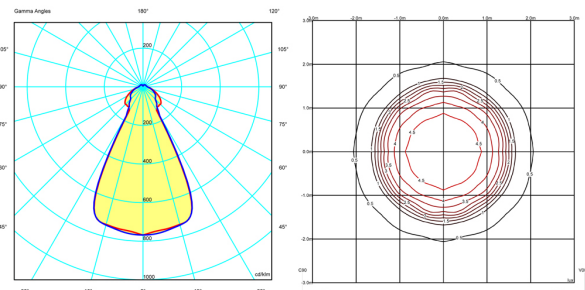
Lamp used to highlight a specific element.



Photometric data

Efficiency : 100.00%
Coordinate system : C-G
Total flux : 62.12 lm
Maximum value : 767.96 cd/klm
Light position : C=0.00 G=0.00
Double symmetrical : 3

Isolux : Isolux (Suelo)
Light position :
X=0.00m Y=0.00m Z=3.00m
Light rotation :



Certificates

