

# PLUS

Design by X. Claramunt and M. de Mas.

**VIBIA**  
LIGHT IS CREATION

## Reference

**0625.**

## Application

Ceiling Lamps

## Installation type

Surface

## Description

Symmetrical ceiling light, designed by X. Claramunt and M. de Mas. Direct, diffuse and uniform light distribution. Convex methacrylate diffuser and matt white lacquer finish, though the whole fixture can be painted in the desired colour to make it blend perfectly into the ceiling. Its form recalls a real skylight. Features dimmable electronic ballast (DALI System).

## Diffuser

Acrylic diffuser

## Finish



**0625-03.**  
Matt white  
lacquer

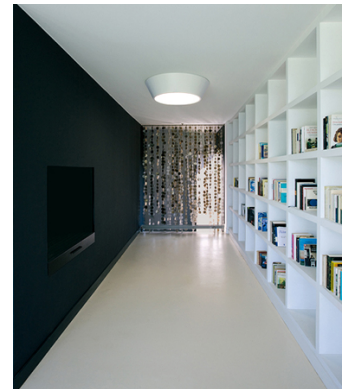
## Sketch



## Electrical characteristics

4 x G5 230V 24W (T5)

Total 96 W



## Physical characteristics

1 Box / 0.27 x 0.96 x 0.96 m. / Vol. 0.2488 m<sup>3</sup> /  
Gross weight 19.0 kg. / Net weight 9.0 kg.

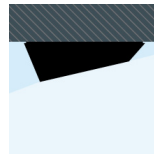
## Installation and assembly

Follow instructions of the installation guide

## Light distribution

### General lighting

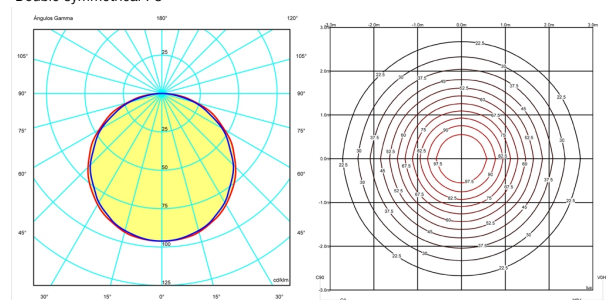
Lamp for general lighting that equally distributes the light in all directions.



## Photometric data

Efficiency : 28.62%  
Coordinate system : C-G  
Total flux : 7000.00 lm  
Maximum value : 96.08 cd/klm  
Light position : C=0.00 G=0.00  
Double symmetrical : 3

Isolux : Isolux (Suelo)  
Light position :  
X=0.00m Y=0.00m Z=3.00m  
Light rotation :



## Certificates

