

STAGE

Design by X. Claramunt and M. de Mas.

VIBIA
LIGHT IS CREATION

Reference

8962.

Application

Ceiling Lamps

Installation type

Built-in

Description

STAGE is a ceiling light with a semi-fitted rotating spotlight to position the light. Designed by X. Claramunt & M. de Mas. It is available in three colours: white lacquer, chrome or matt graphite lacquer.

Diffuser

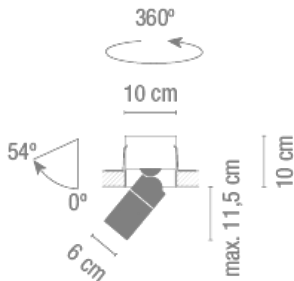
Without diffuser

Finish



8962-01. Chrome
8962-03. White lacquer
8962-18. Matt graphite lacquer

Sketch

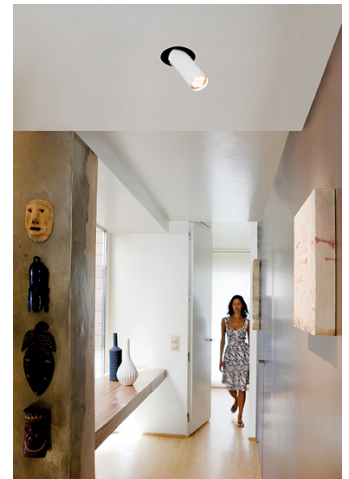


Electrical characteristics

1 x LED 7,8W 550mA



Total 8 W



Physical characteristics

1 Box / 0.21 x 0.21 x 0.48 m. / Vol. 0.0212 m³ /
Gross weight 1.4 kg. / Net weight 1.2 kg.

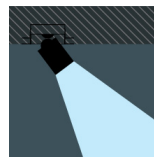
Installation and assembly

Follow instructions of the installation guide

Light distribution

Highlight

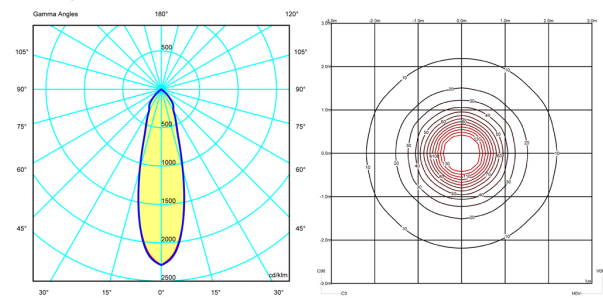
Lamp used to highlight a specific element.



Photometric data

Efficiency : 98.81%
Coordinate system : C-G
Total flux : 856.00 lm
Maximum value : 2411.24 cd/klm
Light position : C=0.00 G=0.00
Double symmetrical : 3

Isolux : Isolux (Suelo)
Light position :
X=0.00m Y=0.00m Z=3.00m
Light rotation :



Certificates

