

I.CONO

Design by Lievore Altherr Molina.

VIBIA
LIGHT IS CREATION

Reference

0725.

Application

Wall Lamps

Installation type

Surface

Description

Wall light for reading. Designed by Lievore, Altherr, Molina. The mechanisms for rotating the head and the base are concealed, thanks to the high technical quality of all the processes involved in the creation of this piece. Available in three finishes: white lacquer, black and pistachio green. Switch in the cable.

Diffuser

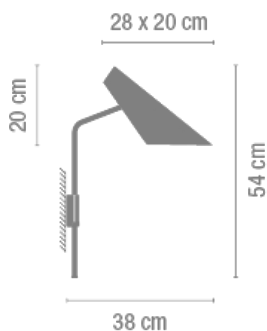
Polycarbonate diffuser

Finish



0725-03. White lacquer
0725-04. Black lacquer
0725-07. Green lacquer

Sketch



Electrical characteristics

1 x E14 230V 60W



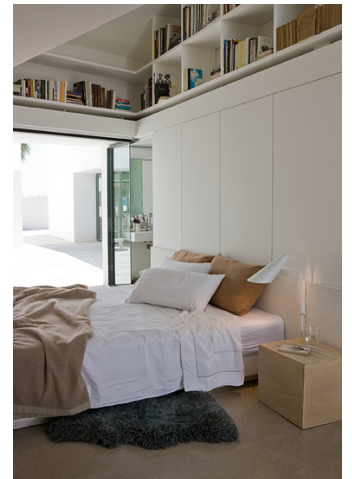
Total 60 W

Or

1 x COMPACT FLUORESCENT E14 230V 15W (MEGAMAN LILIPUT PLUS or similar)



Total 15 W



Physical characteristics

1 Box / 0.26 x 0.51 x 0.51 m. / Vol. 0.0676 m³ /
Gross weight 2.5 kg. / Net weight 1.0 kg.

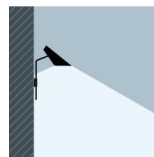
Installation and assembly

Follow instructions of the installation guide

Light distribution

Reading

Lamp having a light beam whose main function is to supply sufficient light for reading.



Photometric data

Efficiency : 53.78%

Coordinate system : C-G

Total flux : 570.00 lm

Maximum value : 194.22 cd/klm

Light position : C=285.00 G=10.00

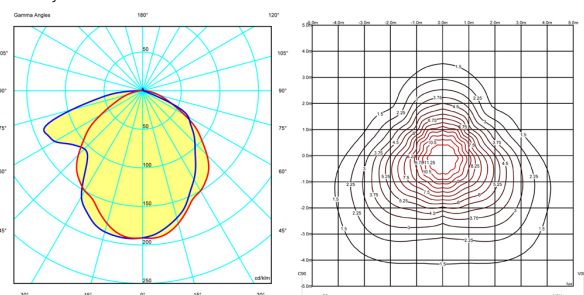
Double symmetrical : 4

Isolux : Isolux (suelo)

Light position :

X=0.00m Y=0.00m Z=3.00m

Light rotation :



Certificates

