



---

# FLOWERPOT VP3

by Verner Panton

---

## ASSEMBLY INSTRUCTIONS

[andtradition.com](http://andtradition.com)

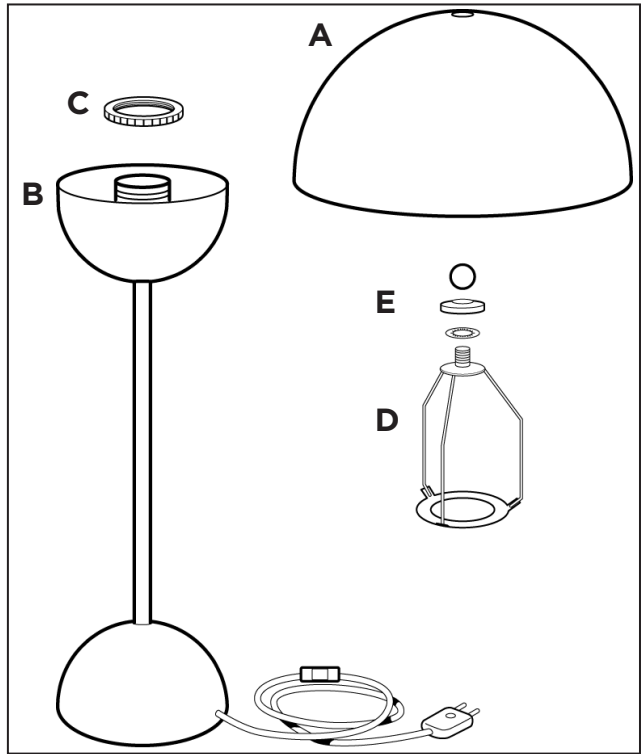
Congratulations on choosing this original FlowerPot table lamp, designed in 1969 by Verner Panton. We hope you will enjoy using this lamp and follow these instructions to ensure correct use. If you have any questions or comments, please do not hesitate to contact us by mail on: [info@andtradition.dk](mailto:info@andtradition.dk)

# Contents:

- A - Shade
- B - Undershade & base
- C - Lamp hilder collar
- D - Shade stand with star washer
- E - logo ring & ball nut.

**Please read these instructions carefully and retain them for future reference to ensure that the lamp is correctly installed should it be moved or sold. For your own safety, please study each step of this instruction manual before you commence installation. &Tradition are not responsible for any faults or damages caused by not following these instructions correctly. Do not modify this lamp in any way.**

Bulb type:  
E27 fitting 40 watt  
tungsten or 7 watt low  
energy bulb.



# Installation Suggestions:

The FlowerPot VP3 table lamp can be used as a stand alone lighting source or in combination with the other lamps in the FlowerPot series. Place it on an office desk, cabinet or bedside table. Different colours can also be combined. Visit our website for more inspiration:

[www.andtradition.com](http://www.andtradition.com)

# Safety Precautions:

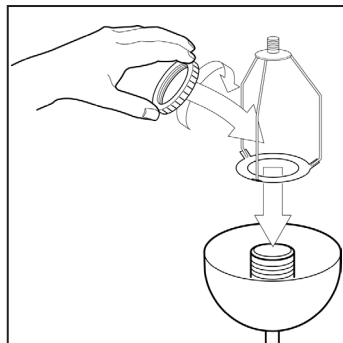
- Dispose of plastic bag from packaging and do not allow children to play with it.
- Keep product well out of children's reach.
- The lamp is only intended for interior use.
- Lamp exterior gets hot after prolonged use.
- Do not attempt installation of product if you are not competent to do so yourself.
- Consult a professionally qualified electrician if in any doubt.
- Do not place the cable in reach of small children or anywhere there is a risk of falling over it.

# Cleaning Instructions:

- Wipe surface of lamp shade with a soft, damp sponge or cloth.
- Do not use any abrasive cleaning tools such as steel wool, scouring sponges or stiff brushes.
- Never use strong cleaning agents such as white spirit, turpentine, household glass cleaner or cellulose thinners.
- Only wipe the inside of the shade with a soft, damp cloth or feather duster..

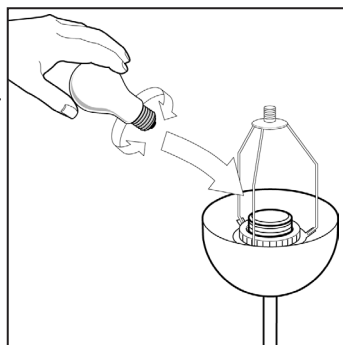
# 01.

Unpack the lamp and unscrew the plastic ring from the light fitting. Place the shade stand onto the light holder and fix in place by re-mounting the plastic ring.



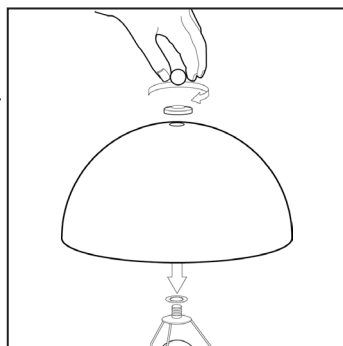
# 02.

Fit a light bulb to the lamp holder and ensure that it sits tight. Avoid using any type of bulb that comes into direct contact with the shade stand to avoid over heating or failure.



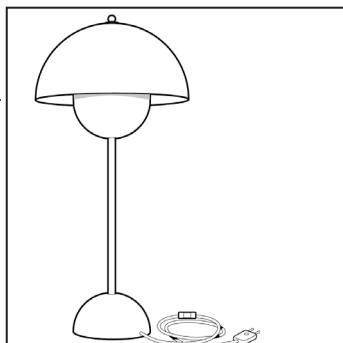
# 03.

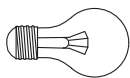
Attach the star washer and lamp shade to the top of the shade stand. Place the logo ring over the top of the stand and mount and tighten the nut. Ensure that the shade sits tight on the lamp.



# 04.

Connect the lamp to an electrical socket and enjoy using your new lamp.





Maximum 40 W.  
Tungsten E27 bulb.



Maximum 7 W.  
Low Energy E27  
bulb.

CE □ F IP20

**& tradition<sup>®</sup>**  
COPENHAGEN

KONGEVEJEN 2. DK-3480 FREDENSBORG.

T. +45 39200233 F.+45 39200256

**INFO@ANDTRADITION.DK WWW.ANDTRADITION.COM**