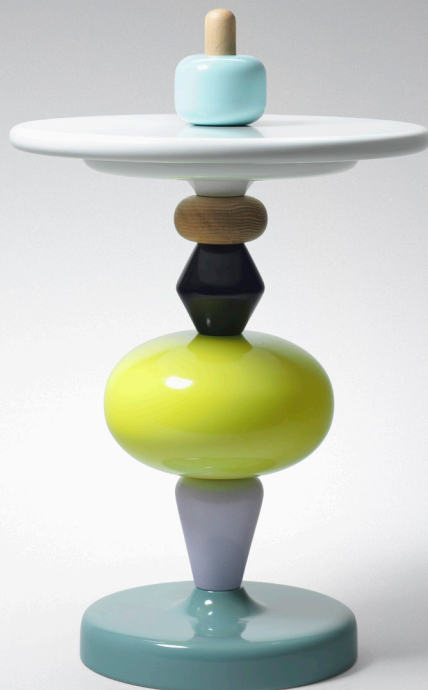


&tradition[®]



SHUFFLE TABLE MH1

by Mia Hamborg

ASSEMBLY INSTRUCTIONS

andtradition.com

Congratulations on choosing this Shuffle table, designed in by Mia Hamborg. We hope you will enjoy using this table and follow these instructions to ensure correct assembly. If you have any questions or comments, please do not hesitate to contact us by mail on:
info@andtradition.dk

Contents:

- A - Table top
- B - table building blocks x 5
- C - Table pillar
- D - Base
- 4 x Screws

Please read these instructions carefully and retain them for future reference to ensure that the table is correctly assembled, should it be moved or sold. For your own safety, please study each step of this instruction manual before you commence assembly. &Tradition are not responsible for any faults or damages caused by not following these instructions correctly. Do not modify this table in any way.

Tools Needed:

Medium Philips-head screwdriver for assembly.

User Suggestions:

The Shuffle table is intended as a flexible piece of furniture that can serve many uses in the home. The building blocks can be combined to place the table top at different heights, making it user friendly for all ages. Visit our website for more inspiration:

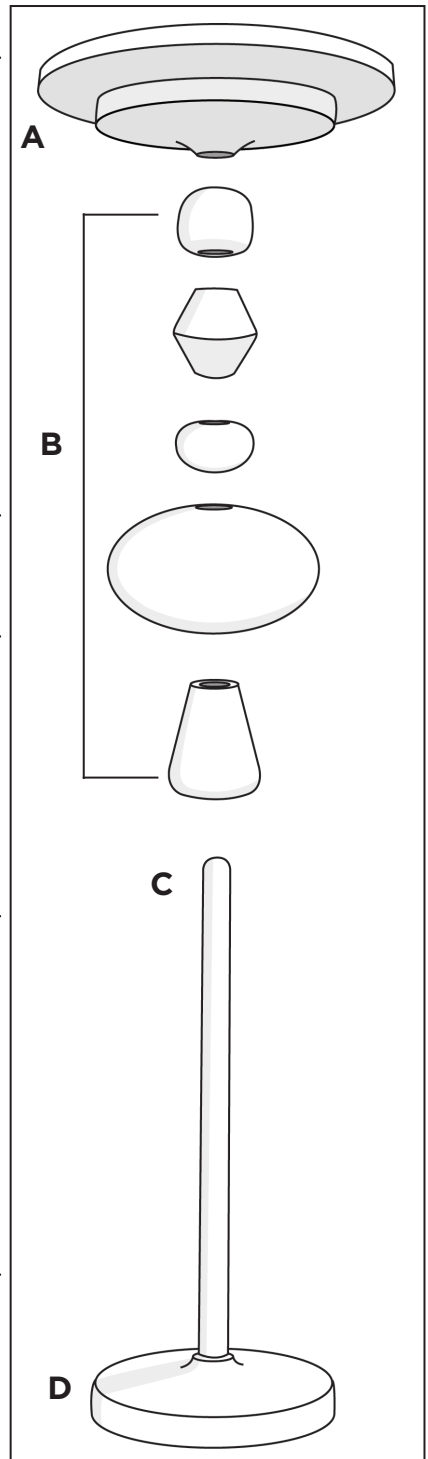
www.andtradition.com

Safety Precautions:

- Dispose of plastic bag from packaging and do not allow children to play with it.
- Children aged 0 - 5 years should not be allowed to stack the table elements.
- The table is only intended for interior use.
- Never stand or sit on the table.
- Do not attempt assembly of product if you are not competent to do so yourself.
- Always ensure the table top is clear before changing the assembly of the table.

Cleaning Instructions:

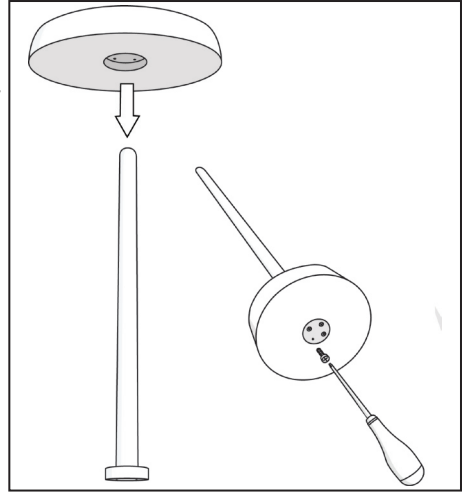
- Wipe surface of table with a soft, damp sponge or cloth.
- Do not use any abrasive cleaning tools such as steel wool, scouring sponges or stiff brushes.
- Never use strong cleaning agents such as white spirit, turpentine, household glass cleaner or cellulose thinners.



01.

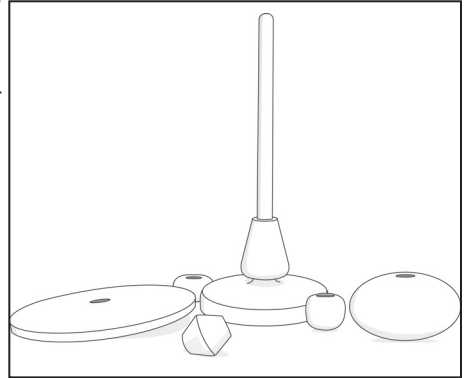
Push the table pillar through the hole in the base as shown in the diagram. Use the four included screws to assemble the bottom of the pillar to the base.

Apply pressure to the bottom of the pillar while tightening the screws so that they grip into the soft MDF base. This ensures a tight and level fit.



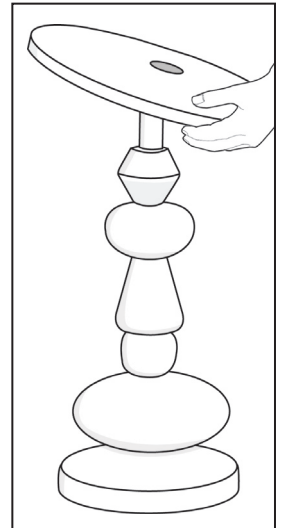
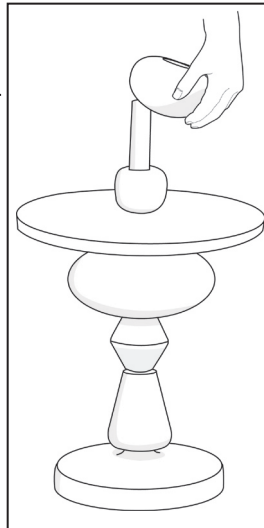
02.

Build up your table by gently placing one wooden block on the pillar at a time. Never let a block drop onto the pillar as this can result in damage to the painted surface.



03.

Construct the table so that the table top is at an appropriate height for its intended use.





& tradition[®]

KONGEVEJEN 2. DK-3480 FREDENSBORG. DENMARK.

T. +45 39200233 F.+45 39200256

INFO@ANDTRADITION.DK WWW.ANDTRADITION.COM